

CERTIFICATE OF LOCATION OF GOVERNMENT CORNER

South 1/4 Corner of Section 22, Township 103N, Range 40W, 5th P.M.

STATE OF MINNESOTA, County of Nobles

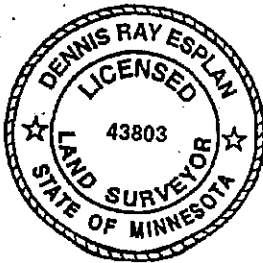
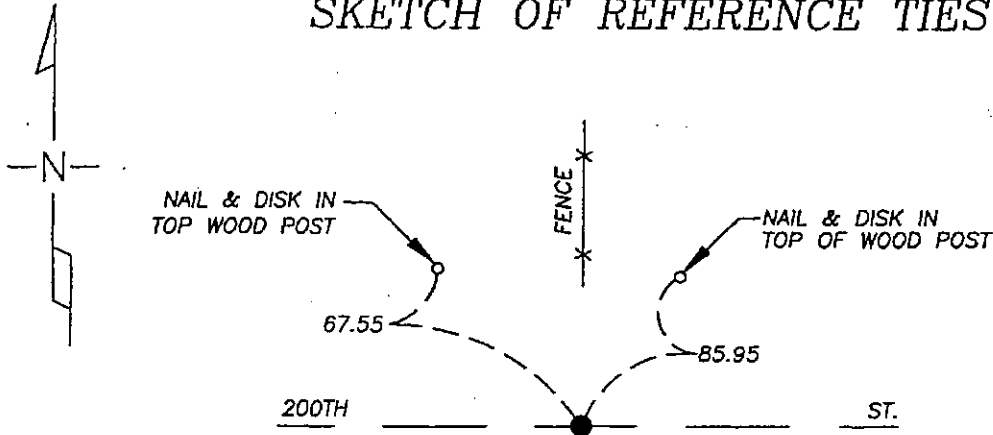
At the corner location shown on the sketch

On 9/16/05 found a P.K. nail over iron stake at road surface, on road center and in line with fence north.

left monument as found lowered monument, removed monument (explain)

On _____ placed a _____

SKETCH OF REFERENCE TIES



Statement of evidence relative to this corner location is on page 2.

I hereby certify that this document and the data contained herein was prepared by me or under my direct supervision.

Dennis Ray Esplan 10/11/05
SIGNATURE DATE

MN. LICENSE NO. 43803

Land Surveyor, Professional Engineer

County Surveyor, County Engineer

OFFICE OF THE COUNTY RECORDER

I hereby certify that this document was filed in the Co. Recorder's Office at _____ on the

_____ day of _____

County Recorder _____
By _____, Deputy

DOCUMENT NO. _____

DOCUMENT NUMBER A 306923

Statement of Evidence

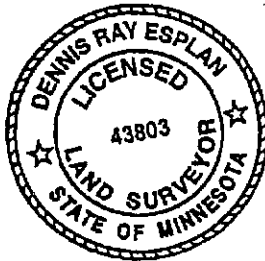
1868 Original Township Subdivision was surveyed by Jewett H. Howe.

1897 Nobles Co. Hwy. Dept. records indicate a stone was found.

1929, 1968 & 1980 Nobles Co. Hwy. Dept. records indicate an iron pin was found.

1992 & 2003 Nobles Co. Hwy. Dept. records indicate a P.K. nail was set after overlay.

2005 Gerald Vickerman PLS and Jeremy Lund, with Zieske Land Surveying, found a P.K. nail at road surface on road centerline and in line with fence north.



DOCUMENT NUMBER A 306923

Certified, Filed and or Recorded on
NOV. 10, 2005 AT 10:35:00AM

Lynn M. Wilson _{rw}

TRACKED _____ COMPARED _____
PHOTO *AS*
FEE _____

NOBLES COUNTY RECORDER
LYNN M. WILSON
507-372-8216