

CERTIFICATE OF LOCATION OF GOVERNMENT CORNER

Southwest Corner of Section 19, Township 103N, Range 40W, 5th P.M.

STATE OF MINNESOTA, County of Nobles

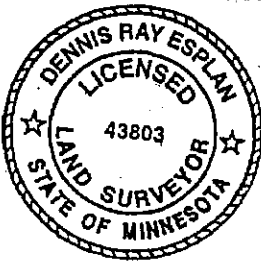
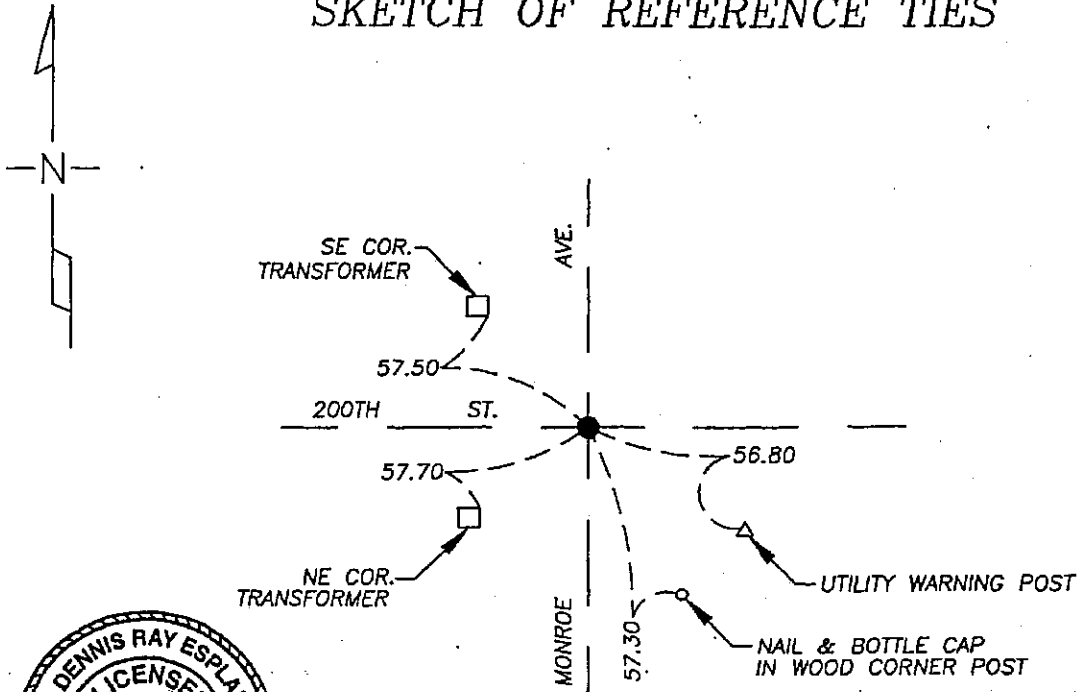
At the corner location shown on the sketch

On 9/16/05 found a Mag nail over iron stake at road surface and on C - C of intersection.

left monument as found lowered monument, removed monument (explain)

On _____ placed a _____

SKETCH OF REFERENCE TIES



NAD 83 (1996)
US STATE PLANE 1983
MN SOUTH
589232.90N
2176953.73E

Statement of evidence relative to this corner location is on page 2.

I hereby certify that this document and the data contained herein was prepared by me or under my direct supervision.

Dennis Ray Esplan 10/11/05
SIGNATURE DATE

MN. LICENSE NO. 43803

- Land Surveyor, Professional Engineer
 County Surveyor, County Engineer

OFFICE OF THE COUNTY RECORDER

I hereby certify that this document was filed in the Co. Recorder's Office at _____ on the _____ day of _____

County Recorder _____
By _____, Deputy
DOCUMENT NO. _____

DOCUMENT NUMBER A 306913

Statement of Evidence

1868 Original Township Subdivision was surveyed by Jewett H. Howe.

1914 Nobles Co. Hwy. Dept. records indicate a stone was set.

1919 Nobles Co. Hwy. Dept. records indicate a stone was found.

1958, 1968 & 1980 Nobles Co. Hwy. records indicate an iron pin was found.

2003 Nobles Co. Hwy. records indicate a P.K. nail was set after overlay.

2005 Gerald Vickerman PLS and Jeremy Lund, with Zieske Land Surveying, found mag nail at surface of road.



DOCUMENT NUMBER A 306913

Certified, Filed and or Recorded on
NOV. 10, 2005 AT 09:45:00AM

Lynn M. Wilson aw

SEARCHED _____
INDEXED _____
FEE _____

COMPARED _____

NOBLES COUNTY RECORDER
LYNN M. WILSON
507-372-8216