

CERTIFICATE OF LOCATION OF GOVERNMENT CORNER

Southwest Corner of Section 20, Township 103N, Range 40W, 5th P.M.

STATE OF MINNESOTA, County of Nobles

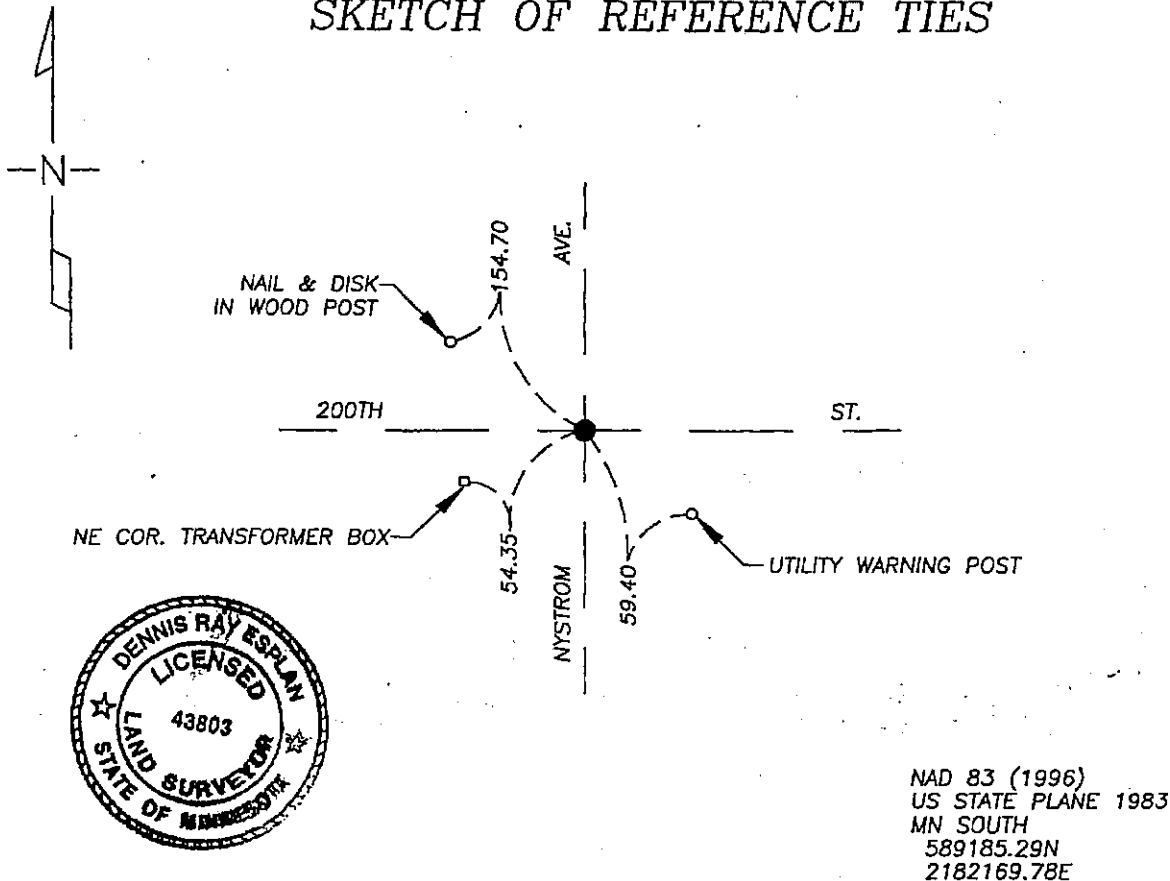
At the corner location shown on the sketch

On 9/16/05 found a mag nail at road surface and at C - C intersection.

left monument as found lowered monument, removed monument (explain)

On _____ placed a _____

SKETCH OF REFERENCE TIES



Statement of evidence relative to this corner location is on page 2.

I hereby certify that this document and the data contained herein was prepared by me or under my direct supervision.

Dennis Ray Eskin SIGNATURE 10/11/05 DATE

MN. LICENSE NO. 43803

Land Surveyor, Professional Engineer

County Surveyor, County Engineer

OFFICE OF THE COUNTY RECORDER

I hereby certify that this document was filed in the Co. Recorder's Office at _____ on the _____ day of _____

County Recorder _____
By _____, Deputy

DOCUMENT NO. _____

DOCUMENT NUMBER A 206915

Statement of Evidence

1868 Original Township Subdivision was surveyed by Jewett H. Howe.

1935 & 1963 Nobles Co. Hwy. Dept. records indicate a stone was found.

1968 Nobles Co. Hwy. Dept. records indicate an iron pin was set.

1980 Nobles Co. Hwy. Dept. records indicate an iron pin was found.

1992 & 2003 Nobles Co. Hwy. Dept. records indicate P.K. nails were placed after overlay.

2005 Gerald Vickerman PLS and Jeremy Lund, with Zieske Land Surveying, found a mag nail at road surface and on center of intersection.



DOCUMENT NUMBER A 306915

Certified, Filed and or Recorded on
NOV. 10, 2005 AT 09:55:00AM

Lynn M. Wilson

TRACKED 0
PHOTO DL
FEE _____

COMPARED _____

NOBLES COUNTY RECORDER
LYNN M. WILSON
507-372-8216