

CERTIFICATE OF LOCATION OF GOVERNMENT CORNER

Southwest Corner of Section 21, Township 103N, Range 40W, 5th P.M.

STATE OF MINNESOTA, County of Nobles

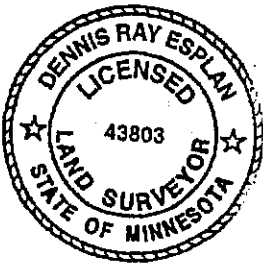
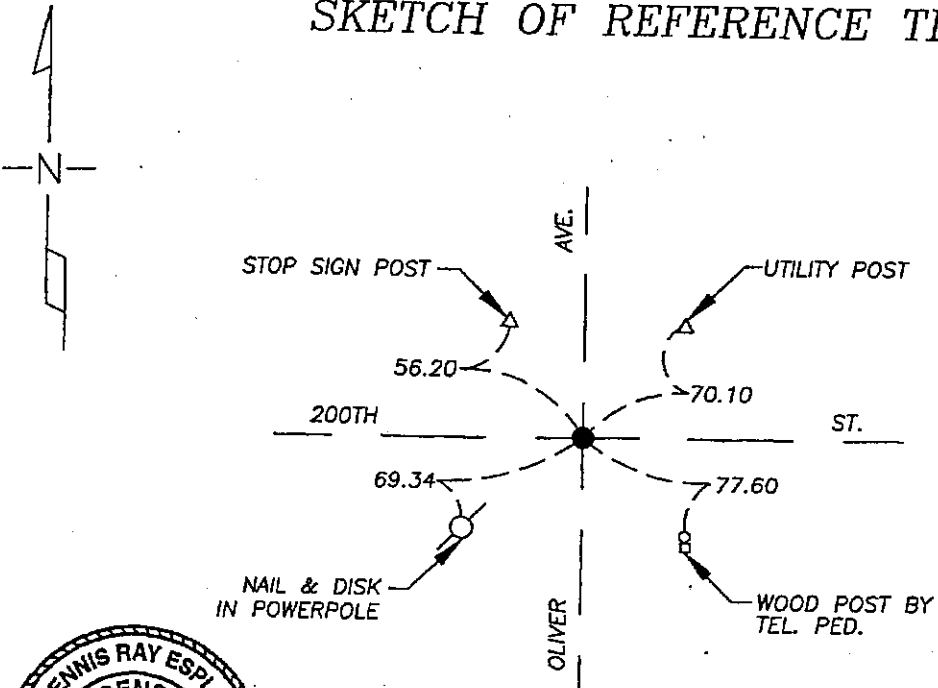
At the corner location shown on the sketch

On 9/16/05 found a mag nail over iron stake at road surface, on E - E of intersection.

left monument as found lowered monument, removed monument (explain)

On _____ placed a _____

SKETCH OF REFERENCE TIES



NAD 83 (1996)
US STATE PLANE 1983
MN SOUTH
588994.42N
2187488.47E

Statement of evidence relative to this corner location is on page 2.

I hereby certify that this document and the data contained herein was prepared by me or under my direct supervision.

Dennis Ray Esplan 10/11/05
SIGNATURE DATE

MN. LICENSE NO. 43803

Land Surveyor, Professional Engineer

County Surveyor, County Engineer

OFFICE OF THE COUNTY RECORDER

I hereby certify that this document was filed in the Co. Recorder's Office at _____ on the

_____ day of _____

County Recorder _____

By _____, Deputy

DOCUMENT NO. _____

DOCUMENT NUMBER A 306919

Statement of Evidence

1868 Original Township Subdivision was surveyed by Jewett H. Howe.

1904 & 1932 Nobles Co. Hwy. Dept. records indicate a stone was found.

1958, 1964, 1980 & 1992 Nobles Co. Hwy. Dept. records indicate an iron pin was found.

2003 Nobles Co. Hwy. Dept. records indicate a P.K. nail was set after overlay.

2005 Gerald Vickerman PLS and Jeremy Lund, with Zieske Land Surveying, found a mag nail at road surface at center of road intersection. Ties taken are consistent with that of Nobles County.



DOCUMENT NUMBER A 306919

Certified, Filed and or Recorded on
NOV. 10, 2005 AT 10:15:00AM

Lynn M. Wilson
ew

TRACKED _____ COMPARED _____
PHOTO 2, 2
FEE _____

NOBLES COUNTY RECORDER
LYNN M. WILSON
507-372-8216