

CERTIFICATE OF LOCATION OF GOVERNMENT CORNER

West 1/4 Corner of Section 21, Township 103, Range 40, 5th P.M.

STATE OF MINNESOTA, County of Nobles

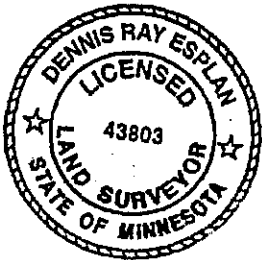
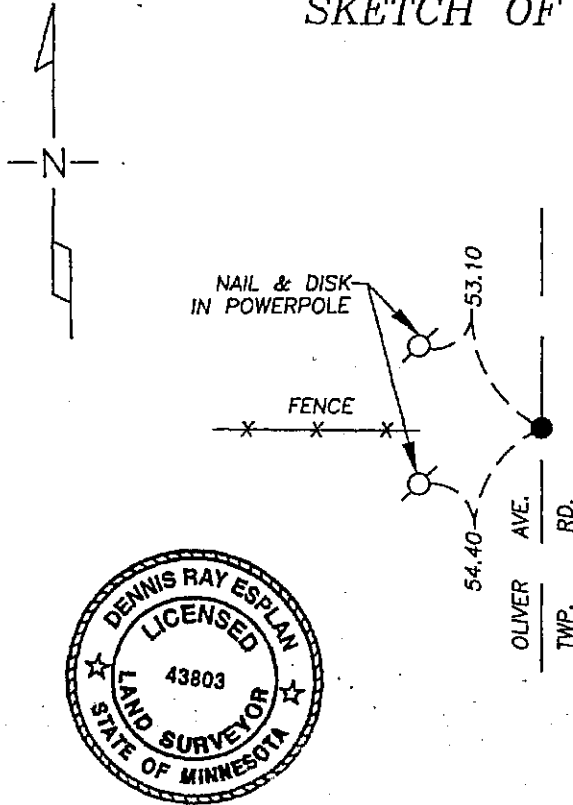
At the corner location shown on the sketch

On 9/13/05 found a Iron Stake with yellow cap "Bell" 2' north of fence line and on E
of road.

left monument as found lowered monument, removed monument (explain)

On _____ placed a _____

SKETCH OF REFERENCE TIES



NAD 83 (1996)
US STATE PLANE 1983
MN SOUTH
591635.81N
2187552.55E

Statement of evidence relative to this corner location is on page 2.

I hereby certify that this document and the data contained herein was prepared by me or under my direct supervision.

Dennis Ray Esplan 10/11/05
SIGNATURE DATE

MN. LICENSE NO. 43803

- Land Surveyor, Professional Engineer
 County Surveyor, County Engineer

OFFICE OF THE COUNTY RECORDER

I hereby certify that this document was filed in the Co. Recorder's Office at _____ on the

_____ day of _____

County Recorder _____

By _____, Deputy

DOCUMENT NO. _____

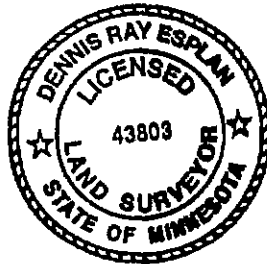
DOCUMENT NUMBER A 306921

Statement of Evidence

1868 Original Township Subdivision was surveyed by Jewett H. Howe.

1904 Nobles Co. Hwy. Dept. records indicate a stone was found.

2005 Gerald Vickerman PLS and Jeremy Lund, with Zieske Land Surveying, found an iron stake with yellow survey cap "BELL" 2' north of fence line west and on centerline of road.



DOCUMENT NUMBER A 306921

Certified, Filed and or Recorded on
NOV. 10, 2005 AT 10:25:25AM

Lynn M. Wilson

NOBLES COUNTY RECORDER
LYNN M. WILSON
507-372-8216

TRACKED DS COMPARED _____
PHOTO DS
FEE _____