

SW  
sec 4  
163  
41

Index E-9

## CERTIFICATE OF LOCATION OF GOVERNMENT CORNER

NORTHEAST Corner of Section 8, Township 103N, Range 41W

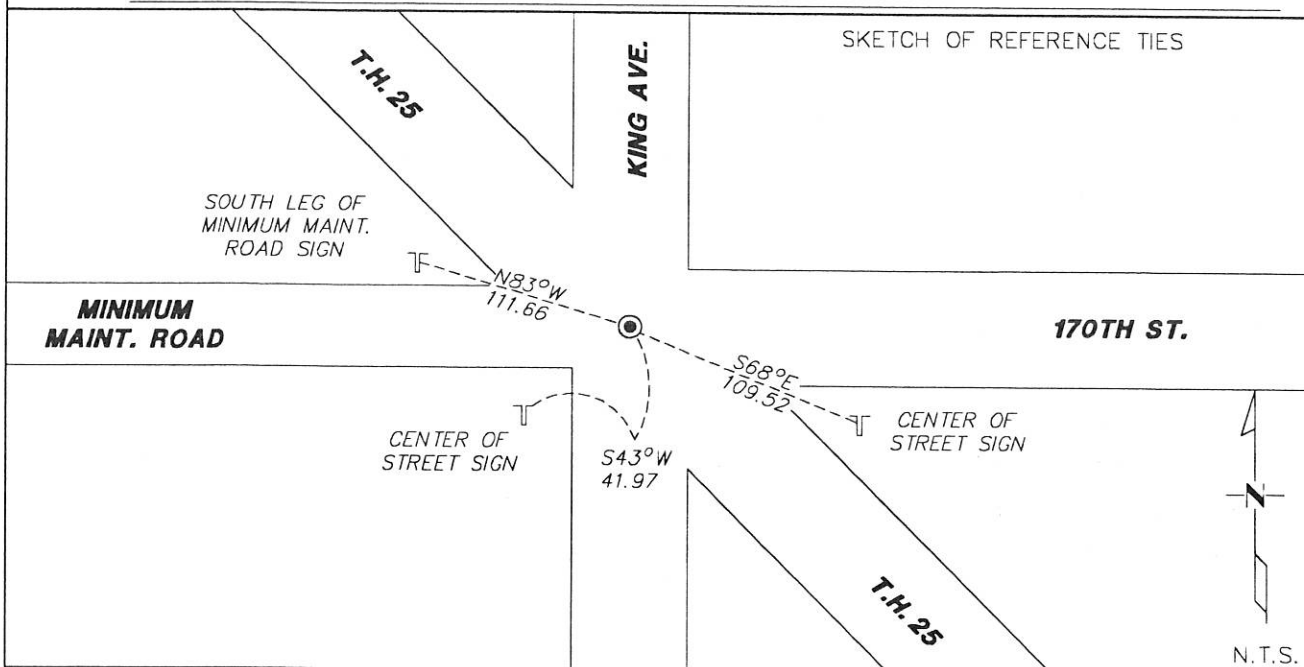
5th Principal Meridian, State of Minnesota, County of Nobles.

At the corner location shown on the sketch:

☒ On 11/8/17 found a CAST IRON MONUMENT AT THE CENTERLINE INTERSECTION  
DATE

☒ left monument as found ☐ lowered monument ☐ removed monument (explain)

☐ On \_\_\_\_\_ placed a \_\_\_\_\_  
DATE



Statement of evidence for this corner location is on back of this page.

I hereby certify that this document was researched and prepared by me or under my direct supervision and that I am a licensed Land Surveyor under the laws of the State of Minnesota.

Signature [Signature]

Date 1/11/18 License No. 49563

Title:

☒ Land Surveyor ☐ Professional Engineer  
☐ County Surveyor ☐ County Engineer

DOCUMENT NUMBER A 357462  
Certified, Filed and/or Recorded on  
March 03, 2018 9:48 AM

[Signature]  
NOBLES COUNTY RECORDER  
LYNN M. WILSON  
FD-295-5268

Page: 2

**Statement of Evidence:**

E-9

Northeast Corner of Section 8, Township 103 North, Range 41 West, 5<sup>th</sup> Principal Meridian, Nobles County, Minnesota.

1868-Deputy Surveyor set a post in mound with pits.

1913-On May 2nd, W.A Satora, County Survey, shows a stone at the corner location in Surveyors Record Book B, page 44. The distance shown to the N1/4 of Sec. 9, 2640.

2006- On February 27th, Ulteig Engineers, Inc. survey crew, Brian Payne Party Chief found a cast iron monument near the centerline intersection of the tree rows. Corner record is filed by Thomas V. Zeff, LS No. 44563, as Doc. 311132 in the County Records Office.

2014-County State Aid Highway No. 25 plans shows corner is 4.02' RT. of Station 165+07.59.

2017-On November 7th, Westwood Professional Services found a cast iron monument but no ties listed on the 2006 Ulteig tie sheet. Location measures well to adjacent section corners. Accepting the location of the found cast iron monument as the position of the corner.

Analysis of the recovered data, field evidence and survey measurements, indicates that the monument found is the correct perpetuation of this corner. For additional information concerning this corner please contact Westwood Professional Services.

*[Handwritten signature]*  
8/1/11