

CERTIFICATE OF LOCATION OF GOVERNMENT CORNER

East Quarter Corner of Section 11, Township 103N, Range 41W, 5th P.M.

STATE OF MINNESOTA, County of Nobles

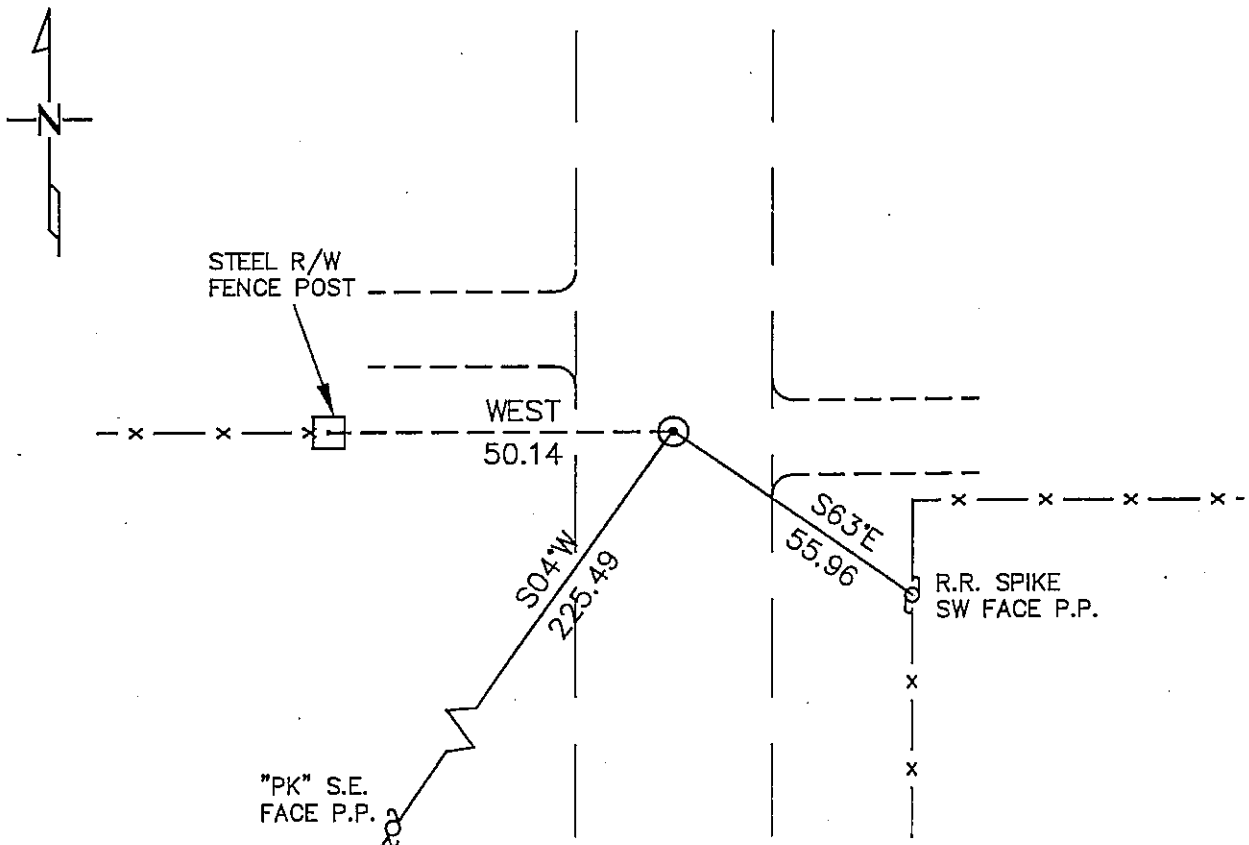
At the corner location shown on the sketch:

On 6/16/94 found a "PK" nail in centerline of Co. Rd No. 9.
DATE

left monument as found, lowered monument, removed monument (explain)

On 11/23/96 placed a 3/4" X 15" Iron Rod with Aluminum Cap at the found "PK" position.
DATE

SKETCH OF REFERENCE TIES



Statement of evidence relative to this corner location is on the back page.

I hereby certify that this document and the data contained herein was prepared by me or under my direct supervision.

[Signature] 30 DEC 96
SIGNATURE DATE

Registration No. 22033
Land Surveyor

OFFICE OF THE COUNTY RECORDER
County of Nobles

I hereby certify that this document was filed in the Co. Recorders office at 10:10 A.M. on the 28th day of May A.D., 1997

County Recorder [Signature]
By _____, Deputy
DOCUMENT NO. 267356

Attest
Public Notary
Phone 519-291-9067

Original position of the East Corner of Section 11, Township 103N, Range 41W, 5th P.M. was surveyed by G.L.O. Deputy Surveyor Jewett Howe in 1868. Mr. Howe set a post in mound with pits for Section Corner.

In 1902 Nobles County Surveyor, M.S. Smith, references an Original Stake marking the position of said Corner in a survey of Section 11, Surveyor's Record Book, pg 94.

Nobles County Highway Department "Corner Ties Book" calls for the following:

- stake in 1902
- stake in 1923
- stake in 1953
- stake in 1961
- stake in 1980 - placed iron pin
- iron pin in 1992 - replaced with "PK" after overlay in 1992

November 23, 1996 Enviroscience, Inc. found the "PK" set by the Nobles County Highway Dept. in 1992. The "PK" was accepted as the perpetuated position of the East Quarter Corner of Section 11, T 103N, R41W. A 3/4" X 15" Iron Rod with an aluminum cap was placed at the position of said "PK".