

CERTIFICATE OF LOCATION OF GOVERNMENT CORNER

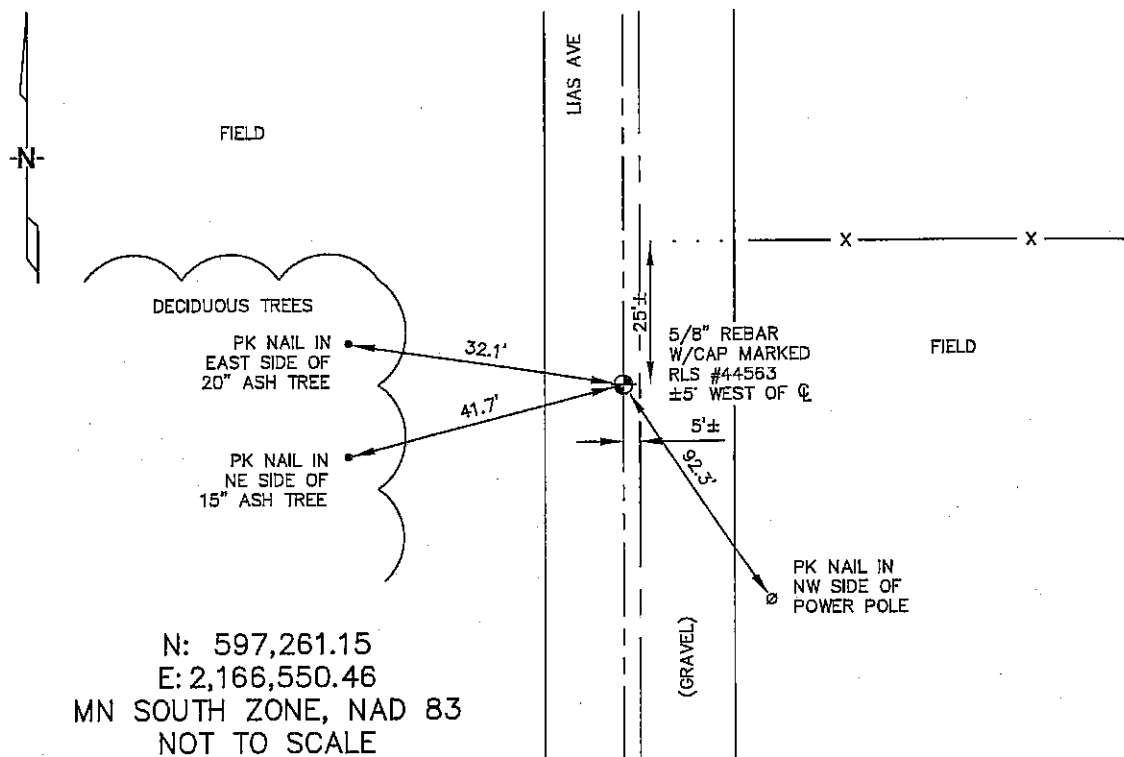
EAST 1/4 Corner of Section 15, Township 103N, Range 41W, 5th P.M.

STATE OF MINNESOTA, County of NOBLES

At the corner location shown on the sketch :

- ☐ On _____ found _____
- ☐ left monument as found, ☐ lowered monument, ☐ removed monument (explain)
- ☒ On 2/22/2006 set 5/8" REBAR WITH CAP: RLS 44563,
5'± WEST FROM C/L OF GRAVEL ROAD.

Sketch of reference ties



Statement of evidence relative to this corner location is on back page

I hereby certify that this document and the data contained herein was prepared by me or under my direct supervision.

James V. Ziff 5/10/06
 Signature Date
 Registration No. 44563

- ☒ Land Surveyor, ☐ Professional Engineer
☐ County Surveyor, ☐ County Engineer

OFFICE OF THE COUNTY RECORDER

County of _____

I hereby certify that this document was filed in the Co. Recorders office at _____ .M. on the _____ day of _____ A.D. , 20

County Recorder _____
 By _____, Deputy

DOCUMENT NO. _____

STATEMENT OF EVIDENCE:

EAST 1/4 CORNER, SECTION 15, T. 103 N., R. 42 W.,
NOBLES COUNTY, MINNESOTA

- 1868 Jewett & Howe, US. Deputy Surveyors, monumented corner.
- 2/22/2006 Ulteig Engineers, Inc. Survey Crew, Dennis Lavallie Party Chief, found nothing. Set a 5/8" rebar with cap: RLS 44563 in gravel road.
Ties: NW-32.1' to PK Nail in E side of 20" ash tree;
SW-41.7' to PK Nail in NE side of 15" Ash tree;
SE-92.3' to PK Nail in NW side of wood, power pole;
N-25'± to projection of fence line running east.