

CERTIFICATE OF LOCATION OF GOVERNMENT CORNER

EAST QUARTER Corner of Section 23, Township 103N, Range 41W, 5th P.M.

STATE OF MINNESOTA, County of NOBLES

At the corner location shown on the sketch :

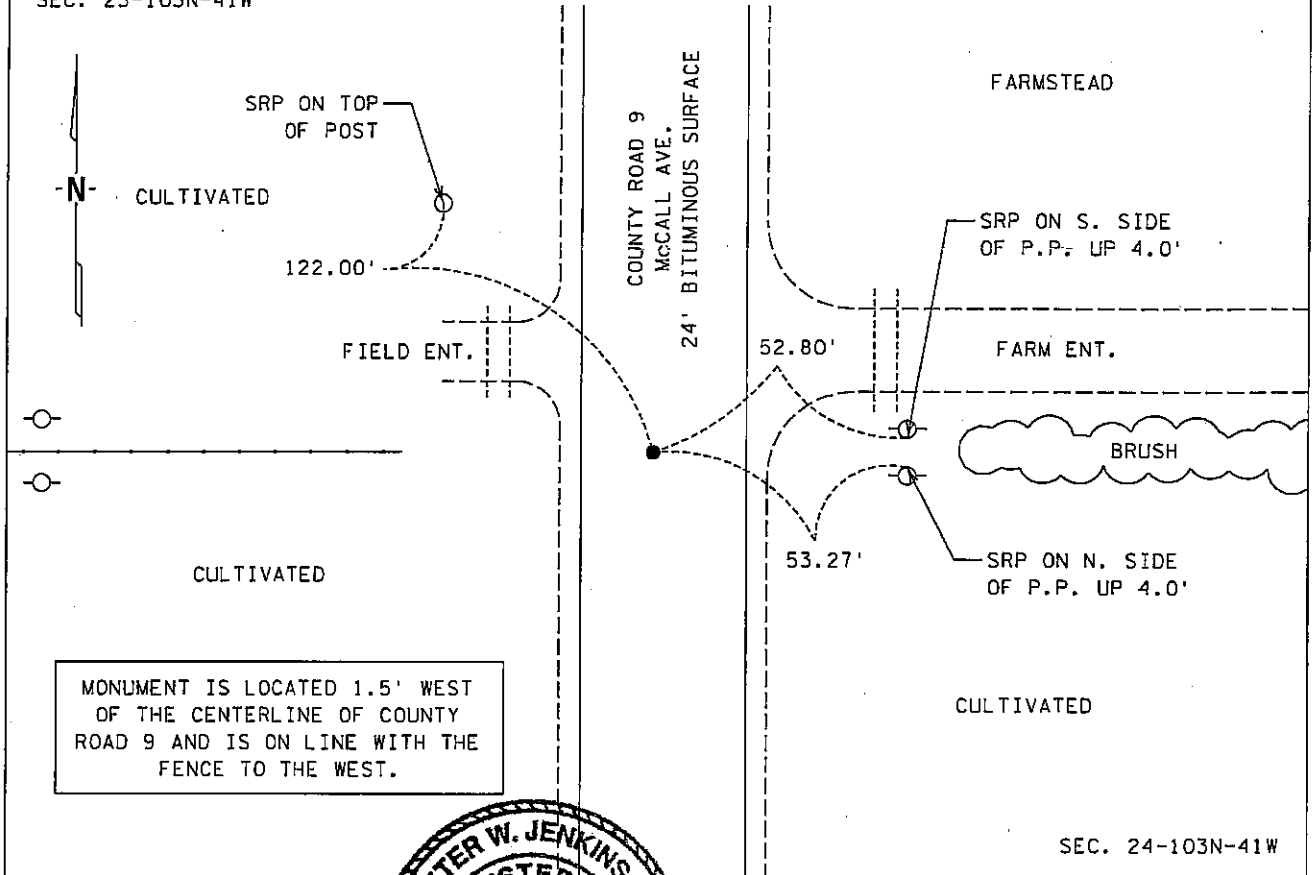
☒ On 20 July 2000 found PK NAIL FLUSH

☒ left monument as found, ☐ lowered monument, ☐ removed monument (explain)

☐ On _____ set _____

SEC. 23-103N-41W

Sketch of reference ties



Statement of evidence relative to this corner location is on back page

I hereby certify that this document and the data contained herein was prepared by me under my direct supervision.

Signature [Signature] Date 30/12/00
Registration No. 22683

☒ Land surveyor ☐ Professional Engineer
☐ County Surveyor, ☐ County Engineer

OFFICE OF THE COUNTY RECORDER
County of Nobles

I hereby certify that this document was filed in the Co. Records office at 8:55 A.M. on the 17th day of January A.D. 2001

County Recorder [Signature]
By _____, Deputy

DOCUMENT NO. 282097

TRACKED 2
PHOTO
FEE 12

Statement of Evidence:

EAST QUARTER CORNER
SECTION 23, TOWNSHIP 103 NORTH, RANGE 41 WEST
5th PRINCIPAL MERIDIAN, MINNESOTA

- 15 Sept. 1868 -George G. Howe & Richard H.L. Jewett, U.S. Deputy Surveyors, "North bet. Secs. 23 & 24" @ 40.00 chs. "Set Post in mound with pits for 1/4 Sec. Cor." No ties.
- 20 June 1900 -Nobles County Recorder's Office, Surveyor's Record, Volume A-2, Page 368, by Milton S. Smith, County Surveyor, shows a stone at the East Quarter Corner of Sec. 23-103-41 with a distance of 2647.6' south to the Southeast Corner and a distance of 2649.3' north to the Northeast Corner.
- 23 Aug. 1900 -Nobles County Recorder's Office, Surveyor's Record, Volume A-2, Page 392, by Milton S. Smith, County Surveyor, shows stones at all Gov't Corners for Sec. 23-103-41.
- Circa 1923 -Nobles County Highway Department, Summit Lake Corner Book, shows a stone at the West Quarter Corner of Sec. 24-103-41.
- 12 May 1925 -Nobles County Recorder's Office, Surveyor's Record, Volume B, Page 147, by John S. Palmer, County Surveyor, shows a stone at the West Quarter Corner of Sec. 24-103-41.
- Circa 1953 -Nobles County Highway Department, Summit Lake Corner Book, shows a stone at the West Quarter Corner of Sec. 24-103-41.
- Circa 1961 -Nobles County Highway Department, Summit Lake Corner Book, shows a stone at the West Quarter Corner of Sec. 24-103-41 and that a wood stake was placed with ties: N&D in Brace Pole 52.50' SW; N&D in Gate Post 56.05' NE; N&D in Brace Pole 50.40' SE.
- Circa 1980 -Nobles County Highway Department, Summit Lake Corner Book, shows a found stake at the West Quarter Corner of Sec. 24-103-41 and set a iron pin with ties: N&D in Brace Pole 52.59' SW; N&D in PP 52.47' NE; N&D PP 52.79' SE.
- Circa 1992 -Nobles County Highway Department, Summit Lake Corner Book, states that a P.K. nail was set at the West Quarter Corner of Sec. 24-103-41 with ties: N&D in Brace Pole 52.59' SW; N&D in PP 52.56' NE; N&D in PP 52.86' SE.
- 20 July 2000 -MnDOT survey crew found a P.K. nail, 1.5' west of the centerline of County Road 9 and inline with the fence line to the west, ties were set and a sketch was made.

The evidence is not conclusive as to the true corner location, however the written, occupational and collateral evidence suggest that this is a reasonable location as to the corner. Additional information regarding the preparation of this certificate can be obtained by contacting: Survey Section, Minnesota Department of Transportation, 501 South Victory Drive, P.O. Box 4039, Mankato, MN 56002-4039.

