

CERTIFICATE OF LOCATION OF GOVERNMENT CORNER

East 1/4 Corner of Section 35, Township 103N, Range 41W, 5th P.M.
 STATE OF MINNESOTA, County of Nobles

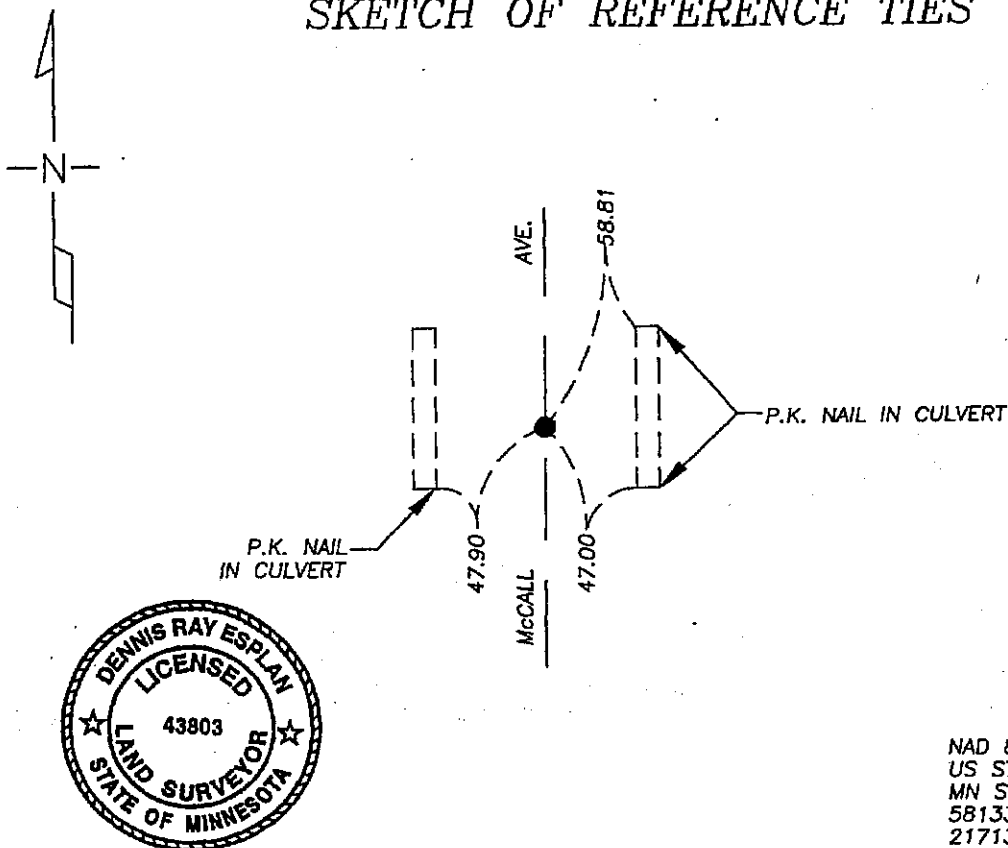
At the corner location shown on the sketch

☒ On 9/26/05 found a Mag nail, position is consistent with county records.

☐ left monument as found ☐ lowered monument, ☐ removed monument (explain)

☐ On _____ placed a _____

SKETCH OF REFERENCE TIES



NAD 83 (1996)
 US STATE PLANE 1983
 MN SOUTH
 581337.12N
 2171387.58E

Statement of evidence relative to this corner location is on page 2.

I hereby certify that this document and the data contained herein was prepared by me or under my direct supervision.

Dennis Ray Esplan 11/04/05
 SIGNATURE DATE

MN. LICENSE NO. 43803

☒ Land Surveyor, ☐ Professional Engineer

☐ County Surveyor, ☐ County Engineer

OFFICE OF THE COUNTY RECORDER

I hereby certify that this document was filed in the Co. Recorder's Office at _____ on the

_____ day of _____

County Recorder _____

By _____, Deputy

DOCUMENT NO. _____

Statement of Evidence

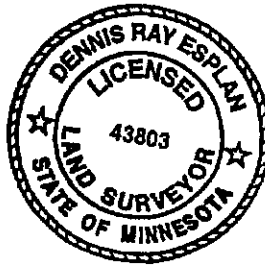
1868 Original Township Subdivision was surveyed by Jewett & Howe.

1893 Nobles Co. Hwy. Dept. records indicate a stone was set.

1895 Nobles Co. Hwy. Dept. records indicate a stone was found.

1963 Nobles Co. Hwy. Dept. records indicate a stake was found and an iron pin was placed.

2005 Gerald Vickerman PLS and Jeremy Lund, with Zieske Land Surveying, found mag nail, position is consistent with county records.



DOCUMENT NUMBER A 306941

Certified, Filed and or Recorded on
NOV. 10, 2005 AT 12:05:00PM

Lynn M. Wilson

TEACHED _____
PHOTO *AS* _____
FEE _____

COMPARED _____

NOBLES COUNTY RECORDER
LYNN M. WILSON
507-372-8216