

CERTIFICATE OF LOCATION OF GOVERNMENT CORNER

NORTH 1/4 Corner of Section 10 Township 103N Range 41W 5th P.M.

STATE OF MINNESOTA, County of NOBLES

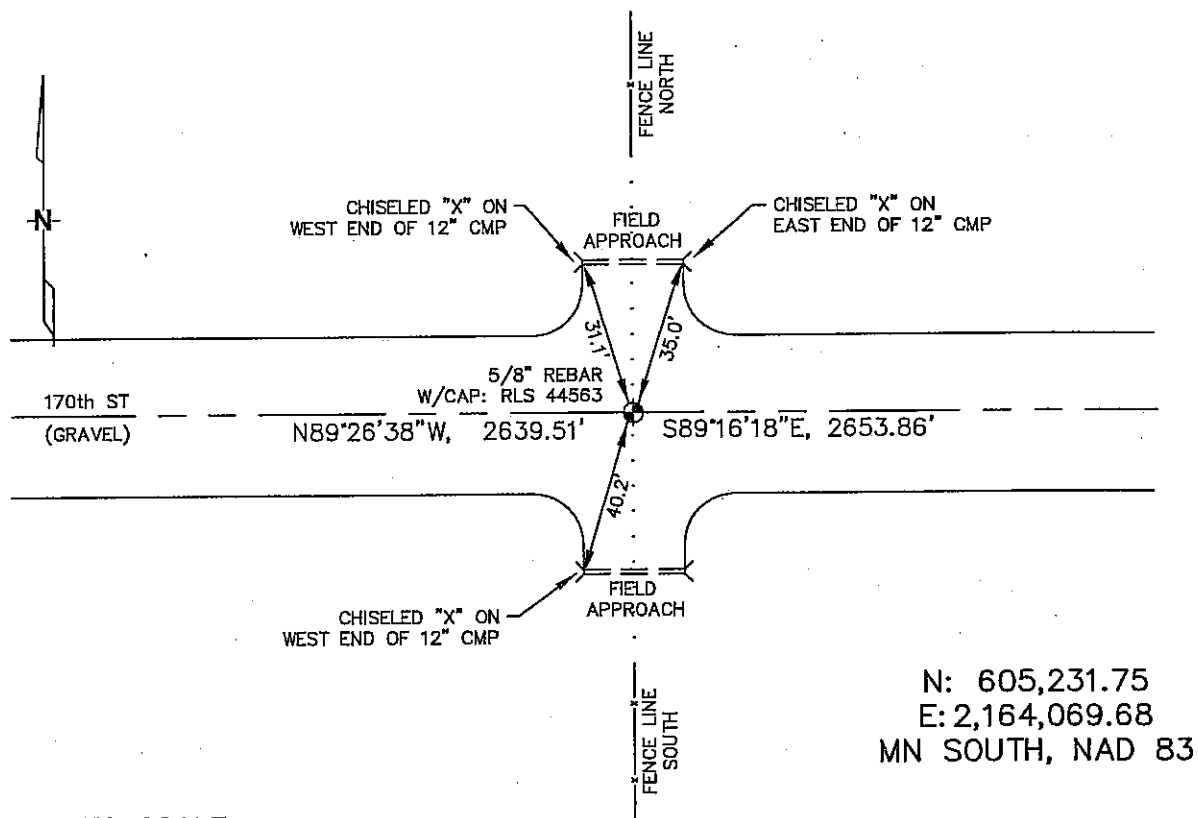
At the corner location shown on the sketch :

☐ On _____ found _____

☐ left monument as found, ☐ lowered monument, ☐ removed monument (explain)

☒ On 02/27/2006 set 5/8" REBAR WITH CAP: RLS 44563

Sketch of reference ties



NOT TO SCALE

Statement of evidence relative to this corner location is on back page

I hereby certify that this document and the data contained herein was prepared by me or under my direct supervision.

Thomas V. Zeff 5/1/06
 Thomas V. Zeff Date
 Registration No. 44563

☒ Land Surveyor, ☐ Professional Engineer
☐ County Surveyor, ☐ County Engineer

OFFICE OF THE COUNTY RECORDER

County of _____

I hereby certify that this document was filed in the Co. Recorders office at _____ M. on the _____ day of _____ A.D. , 20____

County Recorder _____

By _____, Deputy

DOCUMENT NO. _____

STATEMENT OF EVIDENCE:

NORTH 1/4 CORNER, SECTION 10, T.103N., R.41W.,
NOBLES COUNTY, MINNESOTA

1868 Jewett & Howe, U.S. Deputy Surveyors, monumented corner.

2/27/2006 Ulteig Engineers, Inc., Survey Crew, Brian Payne, Party Chief,
 set a 5/8" rebar with cap: RLS 44563 in gravel road; opposite
 fences going north & south.
 Ties: NW-31.1' to chiseled "X" on top of W. end of 12" CMP.
 NE-35.0' to chiseled "X" on top of E. end of 12" CMP.
 SW-40.2' to chiseled "X" on top of W. end of 12" CMP.
 E-2653.86' to NE corner, Section 10,
 W-2639.51' to NW corner, Section 10.