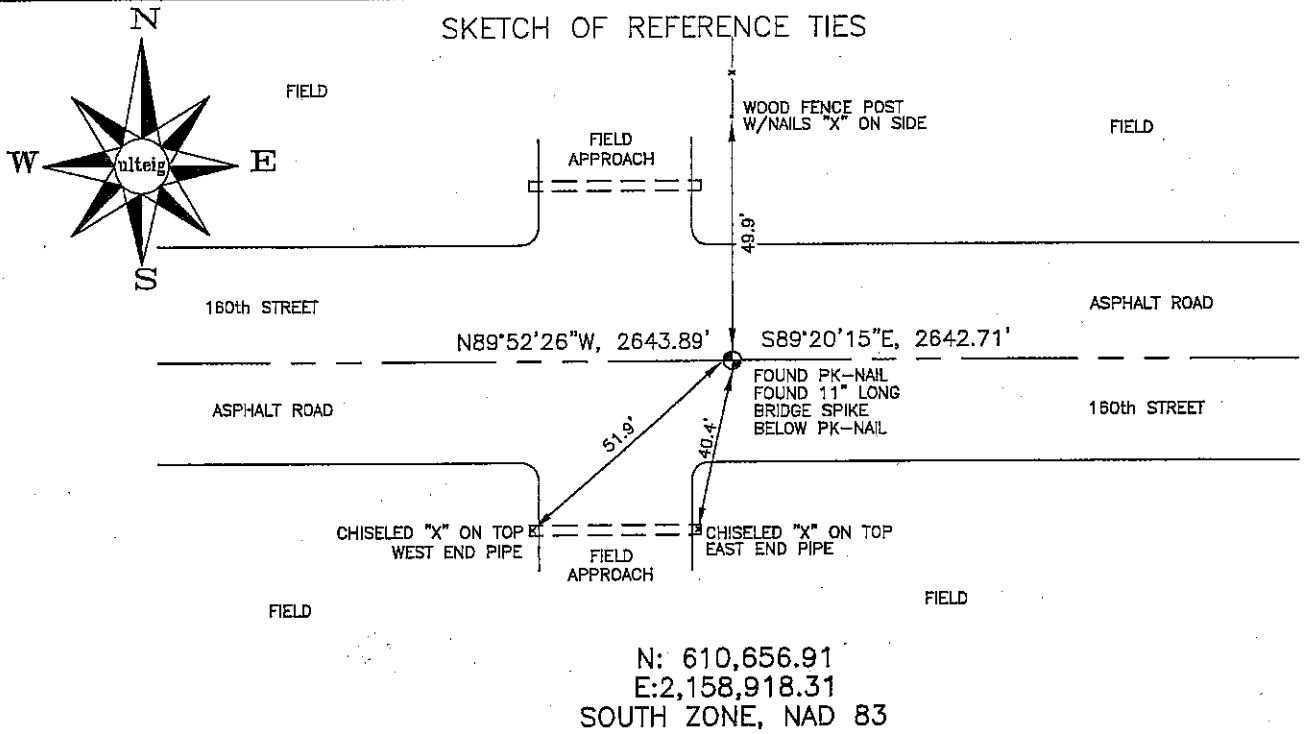


CERTIFICATE OF LOCATION OF GOVERNMENT CORNER

NORTH 1/4 Corner of Section 4, Township 103N, Range 41W, 5th P.M.
 STATE OF MINNESOTA, County of NOBLES

At the corner location shown on the sketch:

- On 03/08/2006 found a PK-NAIL IN ASPHALT PAVEMENT AND AN
DATE 11" LONG BRIDGE SPIKE BENEATH PK-NAIL.
- left monument as found, lowered monument, removed monument (explain)
- On _____ placed a _____
DATE



NOT TO SCALE
 BEARING SYSTEM IS BASED ON MN STATE PLANE COORDINATE SYSTEM, SOUTH ZONE.

Statement of evidence relative to this corner location is on back of page.

I hereby certify that this document and the data contained herein was prepared by me or under my direct supervision.

Thomas V. Zeff
 Thomas Zeff
3/8/06
 DATE

Registration No. 44563

- Land Surveyor, Professional Engineer
 County Surveyor, County Engineer

OFFICE OF THE COUNTY RECORDER

County of _____

I hereby certify that this document was filed in the Co. Recorders office at _____ M. on the _____ day of _____ A.D., 20____

County Recorder _____

By _____, Deputy

DOCUMENT NO. _____

STATEMENT OF EVIDENCE:

NORTH 1/4 CORNER, SECTION 4, T.103N., R.41W.,
NOBLES COUNTY, MINNESOTA

1867 T.B. WALKER, US. DEPUTY SURVEYOR, SURVEYED TOWNSHIP LINES.

1915 A STONE WAS SET ON CORNER; NO TIES RECORDED.

03/08/2006 ULTEIG ENGINEERS, INC., SURVEY CREW, BRIAN PAYNE, PARTY
CHIEF; FOUND A PK-NAIL IN THE ASPHALT AND FOUND AN 11"
LONG BRIDGE SPIKE BENEATH THE PK-NAIL.
TIES: N'LY, 49.9' TO NAIL & DISC IN W. SIDE OF FENCE POST,
OF FENCE LINE GOING NORTH;
S'LY, 40.4' TO "X" MARK CHISELED INTO E. END OF 12"CMP,
SW'LY, 51.9' TO "X" MARK CHISELED INTO W. END OF CMP.