

CERTIFICATE OF LOCATION OF GOVERNMENT CORNER

NORTH 1/4 Corner of Section 5 Township 103N Range 41W 5th P.M.

STATE OF MINNESOTA, County of NOBLES

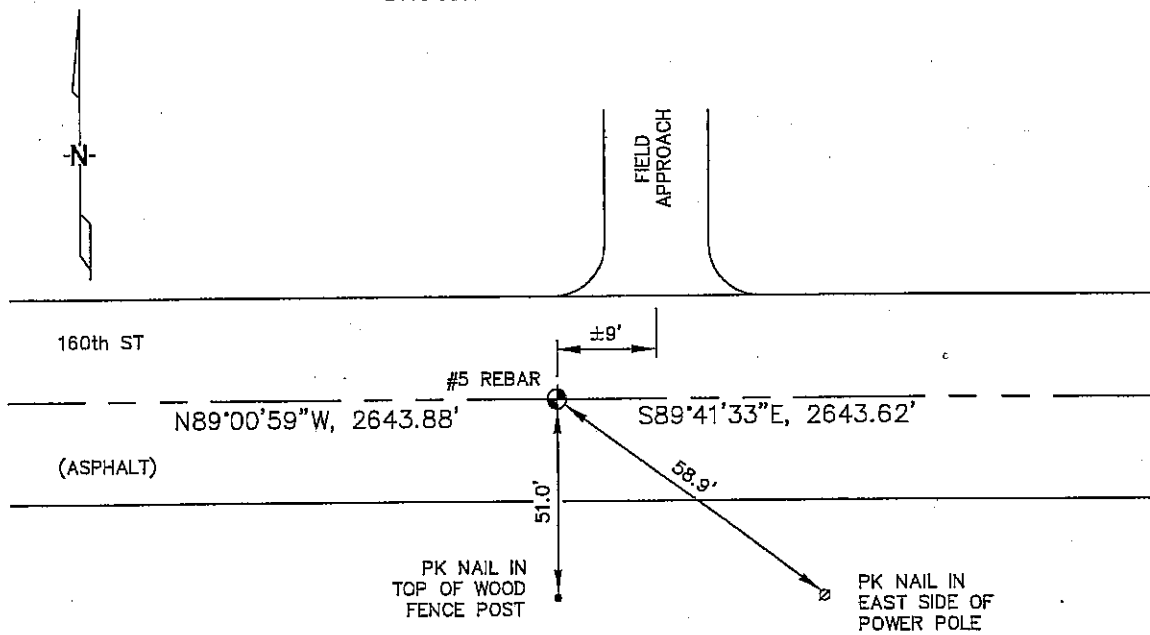
At the corner location shown on the sketch :

On 2/23/2006 found 5/8" REBAR IN ASPHALT PAVEMENT.

left monument as found, lowered monument, removed monument (explain)

On _____ set _____

Sketch of reference ties



N: 610,676.91
E: 2,153,630.84
MN SOUTH ZONE, NAD 83
NOT TO SCALE

Statement of evidence relative to this corner location is on back page

I hereby certify that this document and the data contained herein was prepared by me or under my direct supervision.

Thomas V. Zell Signature 5/10/06 Date

Registration No. 44563

Land Surveyor, Professional Engineer

County Surveyor, County Engineer

OFFICE OF THE COUNTY RECORDER

County of _____

I hereby certify that this document was filed in the Co. Recorders office at _____ .M. on the day of _____ A.D. , 20

County Recorder _____

By _____, Deputy

DOCUMENT NO. _____

STATEMENT OF EVIDENCE:

NORTH 1/4 CORNER, SECTION 5, T. 103 N., R. 41 W.,
NOBLES COUNTY, MINNESOTA

- 1867 T.B. Walker, US. Deputy Surveyor, monumented township line.
- 2/23/2006 Uteig Engineers, Inc. Survey Crew, Dennis Lavallie Party Chief, found a 5/8" rebar in the asphalt pavement.
Ties: SE-58.9' to PK Nail in E side of wood power pole;
S-51.0' to PK Nail in top of wood fence post;
E-2643.62' to NE corner, Section 5;
W-2643.88' to NW corner, Section 5.