

CERTIFICATE OF LOCATION OF GOVERNMENT CORNER

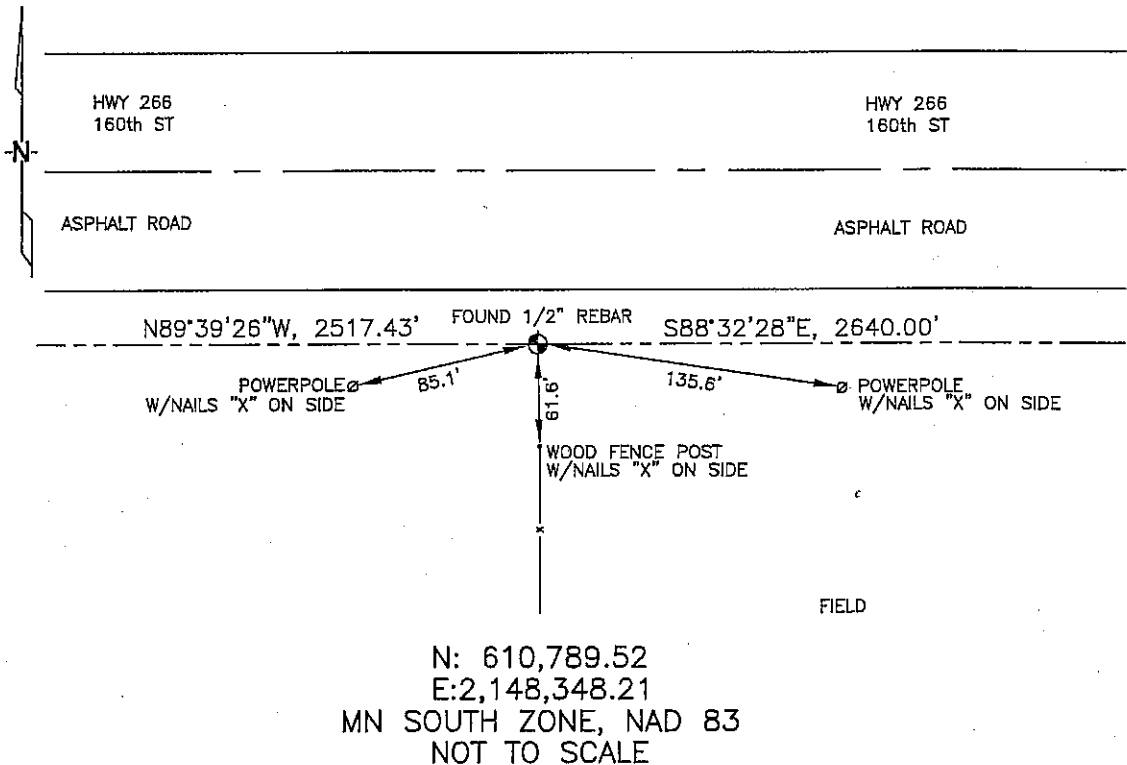
NORTH 1/4 Corner of Section 6, Township 103N, Range 41W, 5TH P.M.

STATE OF MINNESOTA, County of NOBLES

At the corner location shown on the sketch :

- On 3/08/2006 found 1/2" REBAR, 6" DEEP, ON SHOULDER OF
ROAD, OPPOSITE FENCE LINE RUNNING SOUTH.
- left monument as found, lowered monument, removed monument (explain)
- On _____ set _____

Sketch of reference ties



Statement of evidence relative to this corner location is on back page

I hereby certify that this document and the data contained herein was prepared by me or under my direct supervision.

Thomas V. Zeff 4/18/06
 Thomas V. Zeff Date
 Registration No. 44563

- Land Surveyor, Professional Engineer
- County Surveyor, County Engineer

OFFICE OF THE COUNTY RECORDER

County of _____

I hereby certify that this document was filed in the Co. Recorders office at _____ M. on the day of _____ A.D. , 20

County Recorder _____
By _____, Deputy

DOCUMENT NO. _____

STATEMENT OF EVIDENCE:

 NORTH 1/4 CORNER, SECTION 6 , T. 103 N., R. 41 W.,
 NOBLES COUNTY, MINNESOTA

- 1867 T.B. Walker, US. Deputy Surveyor, monumented north township line.
- 1900 Nobles Co., set stone on 1/4 corner; no ties.
- 1944 Nobles Co., found stone, set iron pin; no ties.
- 3/8/2006 Ulteig Engineers, Inc., Survey Crew, Brian Payne Party Chief,
found a 1/2" rebar, 6" deep, opposite a fence line running south.
Ties: SW-85.1' to nailed "X" on power pole;
 S-61.6' to nailed "X" on wood, fence post;
 SE-135.6' to nailed "X" on power pole;
 E-2640.00' to NE corner, Section 6;
 W-2517.43' to NW corner, Section 6.