

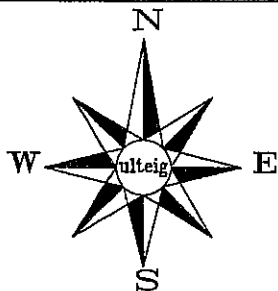
CERTIFICATE OF LOCATION OF GOVERNMENT CORNER

NORTH 1/4 Corner of Section 9, Township 103N, Range 41W, 5th P.M.
STATE OF MINNESOTA, County of NOBLES

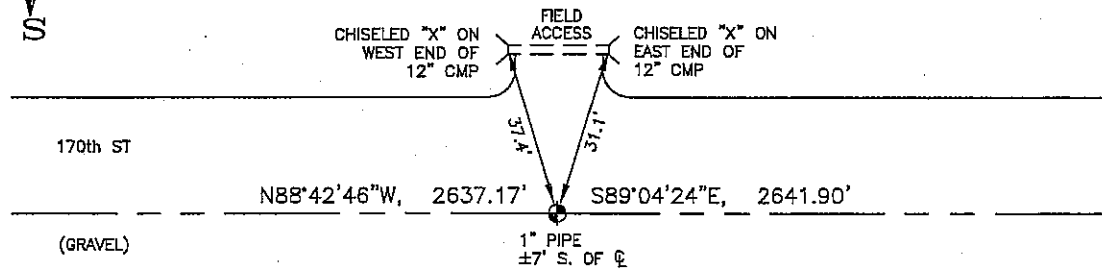
At the corner location shown on the sketch:

☒ On 02/28/2006 found a 1" IRON PIPE IN THE GRAVEL ROAD.
DATE

☒ left monument as found, ☐ lowered monument, ☐ removed monument (explain)
☐ On _____ placed a _____
DATE



SKETCH OF REFERENCE TIES



N: 605,300.09
E: 2,158,788.73
MN SOUTH, NAD 83

NOT TO SCALE

BEARING SYSTEM IS BASED ON MN STATE PLANE COORDINATE SYSTEM, SOUTH ZONE, 1983 NAD.

Statement of evidence relative to this corner location is on back of page.

I hereby certify that this document and the data contained herein was prepared by me or under my direct supervision.

Thomas V. Zeff
Thomas V. Zeff

06/08/06
DATE

Registration No. 44563

☒ Land Surveyor, ☐ Professional Engineer
☐ County Surveyor, ☐ County Engineer

OFFICE OF THE COUNTY RECORDER

County of _____

I hereby certify that this document was filed in the Co. Records office at _____ M. on the _____ day of _____ A.D., 20____

County Recorder _____

By _____, Deputy

DOCUMENT NO. _____

STATEMENT OF EVIDENCE:

NORTH 1/4 CORNER, SECTION 10, T.103N., R.41W.,
NOBLES COUNTY, MINNESOTA

1868

Jewett & Howe, U.S. Deputy Surveyors.
East, between Sections 3 & 10, set monument per
instructions.

02/28/2006:

Ulteig Engineering, Inc., Survey Crew, Brian Payne,
Party Chief, found a 1" iron pipe in a gravel road.
Ties: NE-31.1' to chiseled "X", E end, 12" C.M.P.;
NW-37.4' to chiseled "X", W end, 12" C.M.P.;
N-7'± to C/L of gravel road;
E-2641.90' to NE corner, Section 10;
W-2637.17' to NW corner, Section 10.