

CERTIFICATE OF LOCATION OF GOVERNMENT CORNER

NORTHEAST Corner of Section 10 Township 103N Range 41W 5th P.M.

STATE OF MINNESOTA, County of NOBLES

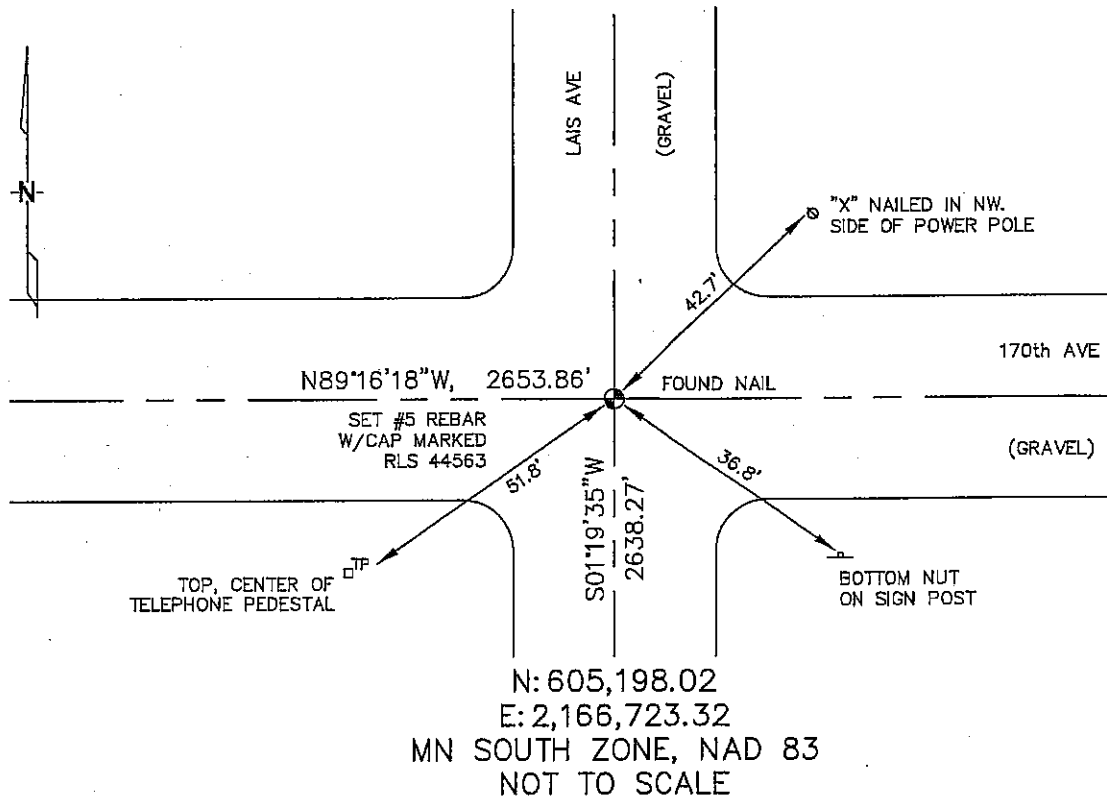
At the corner location shown on the sketch :

☒ On 4/10/2006 found NAIL AT INTERSECTION

☐ left monument as found, ☐ lowered monument, ☒ removed monument (explain)

☒ On 4/10/2006 set 5/8" REBAR WITH CAP: RLS 44563,
0.4' BELOW SURFACE.

Sketch of reference ties



Statement of evidence relative to this corner location is on back page

I hereby certify that this document and the data contained herein was prepared by me or under my direct supervision.

Thomas N. Zeff 5/2/06
Date
Registration No. 44563

☒ Land Surveyor, ☐ Professional Engineer

☐ County Surveyor, ☐ County Engineer

OFFICE OF THE COUNTY RECORDER

County of _____

I hereby certify that this document was filed in the Co. Recorders office at _____ M. on the _____ day of _____ A.D. , 20

County Recorder _____

By _____, Deputy

DOCUMENT NO. _____

STATEMENT OF EVIDENCE:

NORTHEAST CORNER, SECTION 10, T.103N., R.41W.,
NOBLES COUNTY, MINNESOTA

- 1866 JEWETT & HOWE, U.S. DEPUTY SURVEYORS, MONUMENTED CORNER.
- 1936 NOBLES CO. HIGHWAY DEPT., FOUND A STONE; NO TIES.
- 1943 NOBLES CO. HIGHWAY DEPT., FOUND STONE & PLACED A
WOOD STAKE NEXT TO OR ON TOP OF IT; NO TIES.
- 4/10/2006 ULTEIG ENGINEERS, INC., SURVEY CREW, BRIAN PAYNE PARTY CHIEF,
FOUND A NAIL AT INTERSECTION OF GRAVEL ROADS.
REPLACED NAIL WITH A 5/8" REBAR WITH CAP: RLS 44563, 0.4'
BELOW SURFACE.
TIES: NE-42.7' TO NAILED "X" ON SIDE OF POWER POLE;
SE-36.8' TO BOTTOM NUT ON SIGN POST;
SW-51.8' TO TOP, CENTER OF TELEPHONE PEDESTAL;
S-2638.27' TO EAST 1/4 CORNER, SECTION 10;
W-2653.86' TO NORTH 1/4 CORNER, SECTION 10.