

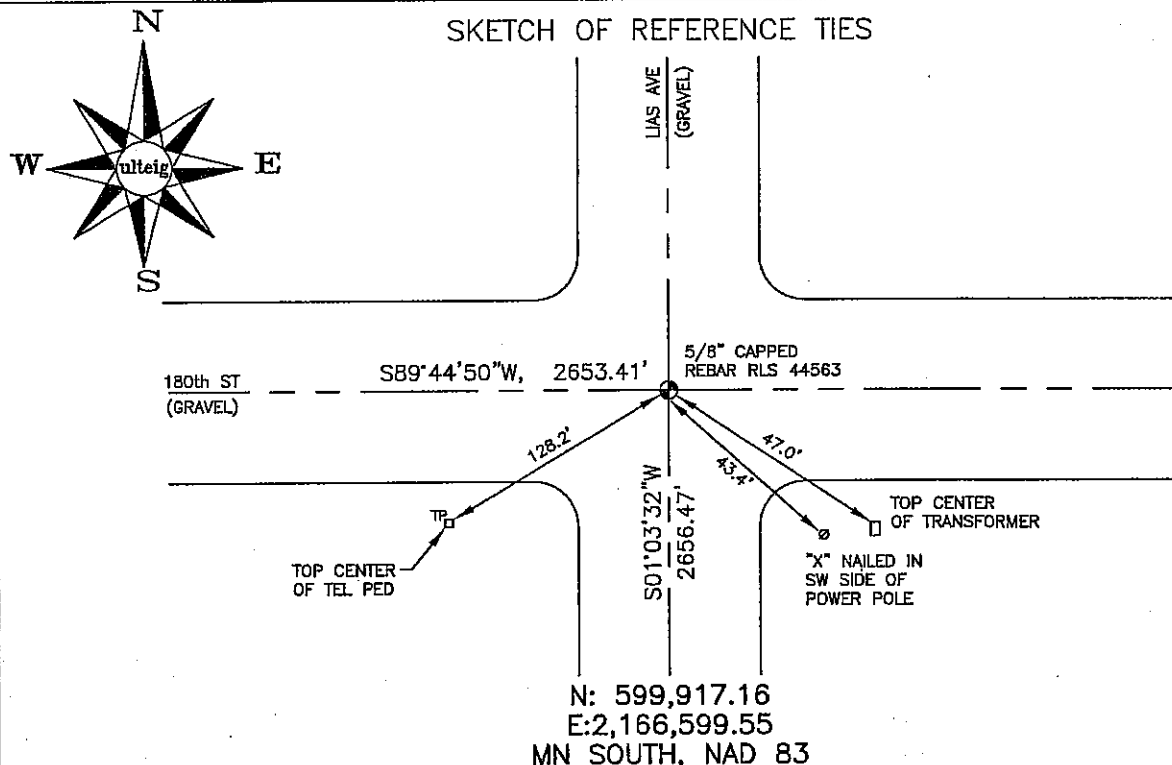
CERTIFICATE OF LOCATION OF GOVERNMENT CORNER

NORTHEAST Corner of Section 15, Township 103N, Range 41W, 5th P.M.
STATE OF MINNESOTA, County of NOBLES

At the corner location shown on the sketch:

☒ On 03/01/2006 found a NAIL AT THE INTERSECTION OF 2 GRAVEL ROADS.
DATE

☐ left monument as found, ☐ lowered monument, ☒ removed monument (explain)
☒ On 03/01/2006 placed a 5/8" REBAR WITH CAP: RLS 44563,
DATE
IN ITS PLACE.



NOT TO SCALE

BEARING SYSTEM IS BASED ON THE MN STATE PLANE COORDINATE SYSTEM, SOUTH ZONE, 1983 NAD.

Statement of evidence relative to this corner location is on back of page.

I hereby certify that this document and the data contained herein was prepared by me or under my direct supervision.

Thomas V. Zell
Thomas V. Zell

5/1/06
DATE

Registration No. 44563

☒ Land Surveyor, ☐ Professional Engineer
☐ County Surveyor, ☐ County Engineer

OFFICE OF THE COUNTY RECORDER

County of _____

I hereby certify that this document was filed in the Co. Recorders office at _____ .M. on the _____ day of _____ A.D., 20____

County Recorder _____

By _____, Deputy

DOCUMENT NO. _____

STATEMENT OF EVIDENCE:

NORTHEAST CORNER, SECTION 15, T.103N., R.41W.,
NOBLES COUNTY, MINNESOTA

1868

Jewett & Howe, U.S. Deputy Surveyors.
North, between Sections 8 & 9 at 80 chains.

02/27/2006:

Ulteig Engineering, Inc., Survey Crew, Brian Payne,
Party Chief, found a nail at the center line inter-
section of 2 gravel roads and replaced the nail with
a 5/8" rebar and cap: RLS 44563.

Ties: SW-128.2' to top, center of telephone pedestal.
SE-43.4' to "X" nailed on SW side of power pole.
SE-47.0' to top, center of transformer,
S-2656.47' to E 1/4 corner, Section 15,
W-2653.41' to N 1/4 corner Section 16.