

# CERTIFICATE OF LOCATION OF GOVERNMENT CORNER

NORTHEAST Corner of Section 22, Township 103N, Range 41W, 5th P.M.

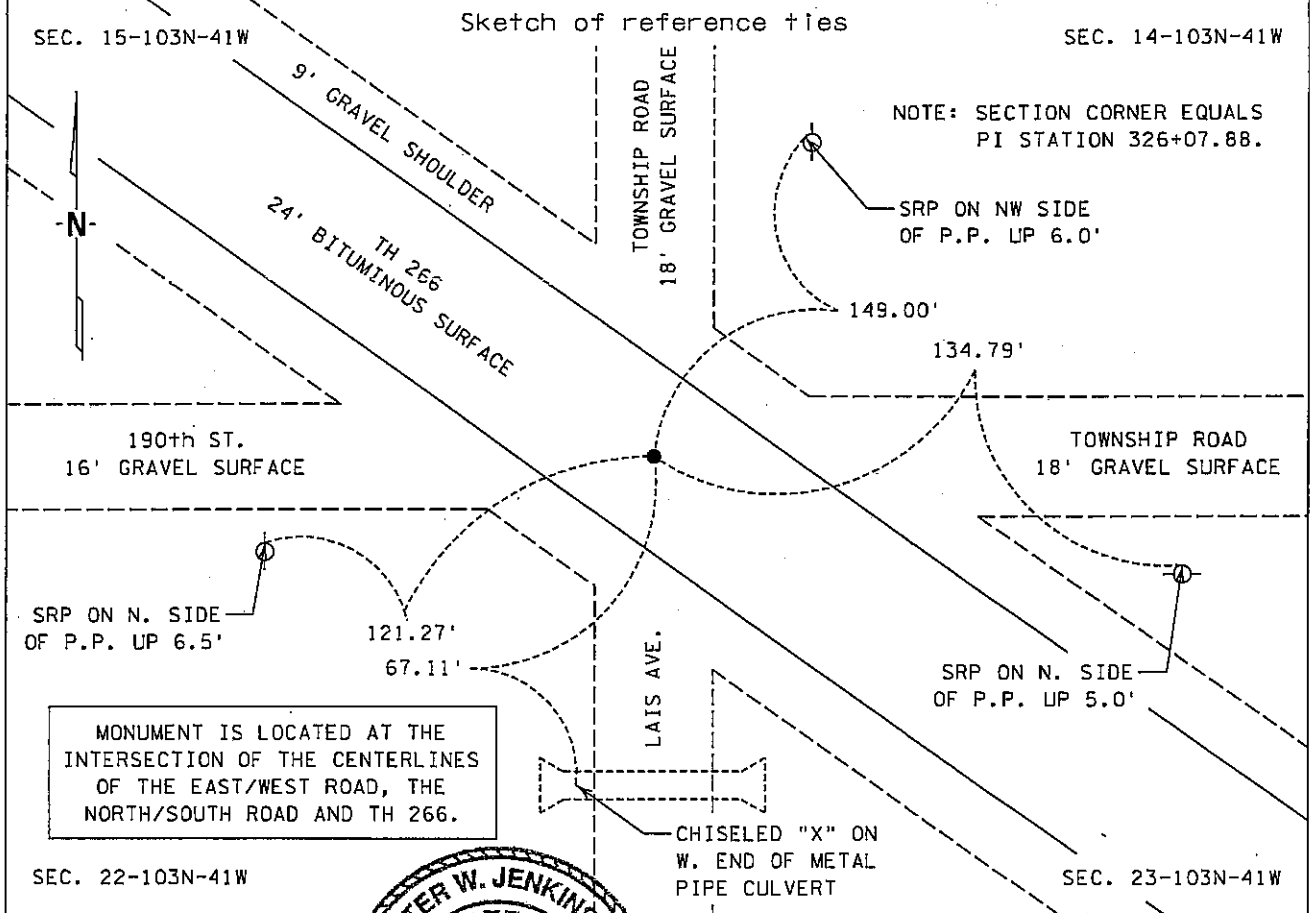
STATE OF MINNESOTA, County of NOBLES

At the corner location shown on the sketch :

☒ On 19 July 2000 found 3/4" IRON PIN DOWN 0.4'

☒ left monument as found, ☐ lowered monument, ☐ removed monument (explain)

☐ On \_\_\_\_\_ set \_\_\_\_\_



Statement of evidence relative to this corner location is on back page

I hereby certify that this document and the data contained herein was prepared by me or under my direct supervision.

Signature Peter W. Jenkins Date 22 DEC 00  
Registration No. 22683

☒ Land surveyor, ☐ Professional Engineer

☐ County Surveyor, ☐ County Engineer

OFFICE OF THE COUNTY RECORDER

County of Nobles

I hereby certify that this document was filed in the Co. Recorders office at 8:50 A.M. on the 17th day of January A.D. 2001

County Recorder Jayne Howard  
By \_\_\_\_\_, Deputy

DOCUMENT NO. 282096

TRACKED & COMPARED  
PHOTO OK  
FEE 77c

Statement of Evidence:

NORTHEAST CORNER  
SECTION 22, TOWNSHIP 103 NORTH, RANGE 41 WEST  
5th PRINCIPAL MERIDIAN, MINNESOTA

- 18 Sept. 1868 -George G. Howe & Richard H.L. Jewett, U.S. Deputy Surveyors, "North bet. Secs. 22 & 23" @ 80.00 chs. "Set Post in mound with Pits for Cor. to Secs. 14, 15, 22 & 23." No ties.
- 23 Aug. 1900 -Nobles County Recorder's Office, Surveyor's Record, Volume A-2, Page 392, by Milton S. Smith, County Surveyor, shows stones at all Gov't Corners for Sec. 23-103-41.
- 2 Dec. 1957 -Minnesota Highway Department, Right of Way Map for TH 266, SP 5311, shows a stone monument in place for the Northeast Corner of Sec. 22-103-41 and at engineers station PI 326+07.8 with ties: TP 66.33' NE; PP 135.61' ESE; PP 118.22' WSW.
- 15 June 1978 -Minnesota Department of Transportation, Certificate of Location of Gov't Corner, Northeast Corner of Sec. 22-103-41, unsigned and unrecorded, shows the a found 3/4" iron pin, flush with the surface and at engineers station PI 326+07.88 with ties: SRP in PP 148.65' NNE; Iron pin in concrete monument with witness post 119.26' ENE; 'X' in CMP 67.07' SSW; SRP in PP 134.88' WSW.
- 8 Oct. 1984 \* -Martin Land Surveying, Inc., Worthington, Minnesota, a survey of Sec. 22-102-41, by Gary D. Martin, RLS # 12967, shows a found 3/4" iron pin at the Northeast Corner with no ties.
- 19 July 2000 -MnDOT survey crew found a 3/4" iron pin, down 0.4' on the centerline of TH 266 and at engineers station PI 326+07.88 with the following ties: SRP in PP 149.00 NNE; SRP in PP 134.79' ESE; 'X' in CMP 67.11' SSW; SRP in PP 121.27' WSW.

\* Gary D. Martin, RLS # 12967, owned and operated Martin Land Surveying, Inc., in Worthington, Minnesota and sold the business in 1987, Mr. Martin is currently practicing in Woodstock, Georgia.

The evidence is not conclusive as to the true corner location, however the written, occupational and collateral evidence suggest that this is a reasonable location as to the corner. Additional information regarding the preparation of this certificate can be obtained by contacting: Survey Section, Minnesota Department of Transportation, 501 South Victory Drive, P.O. Box 4039, Mankato, MN 56002-4039.