

# CERTIFICATE OF LOCATION OF GOVERNMENT CORNER

NORTHEAST Corner of Section 23, Township 103N, Range 41W, 5th P.M.

STATE OF MINNESOTA, County of NOBLES

At the corner location shown on the sketch :

☒ On 20 July 2000 found PK NAIL FLUSH

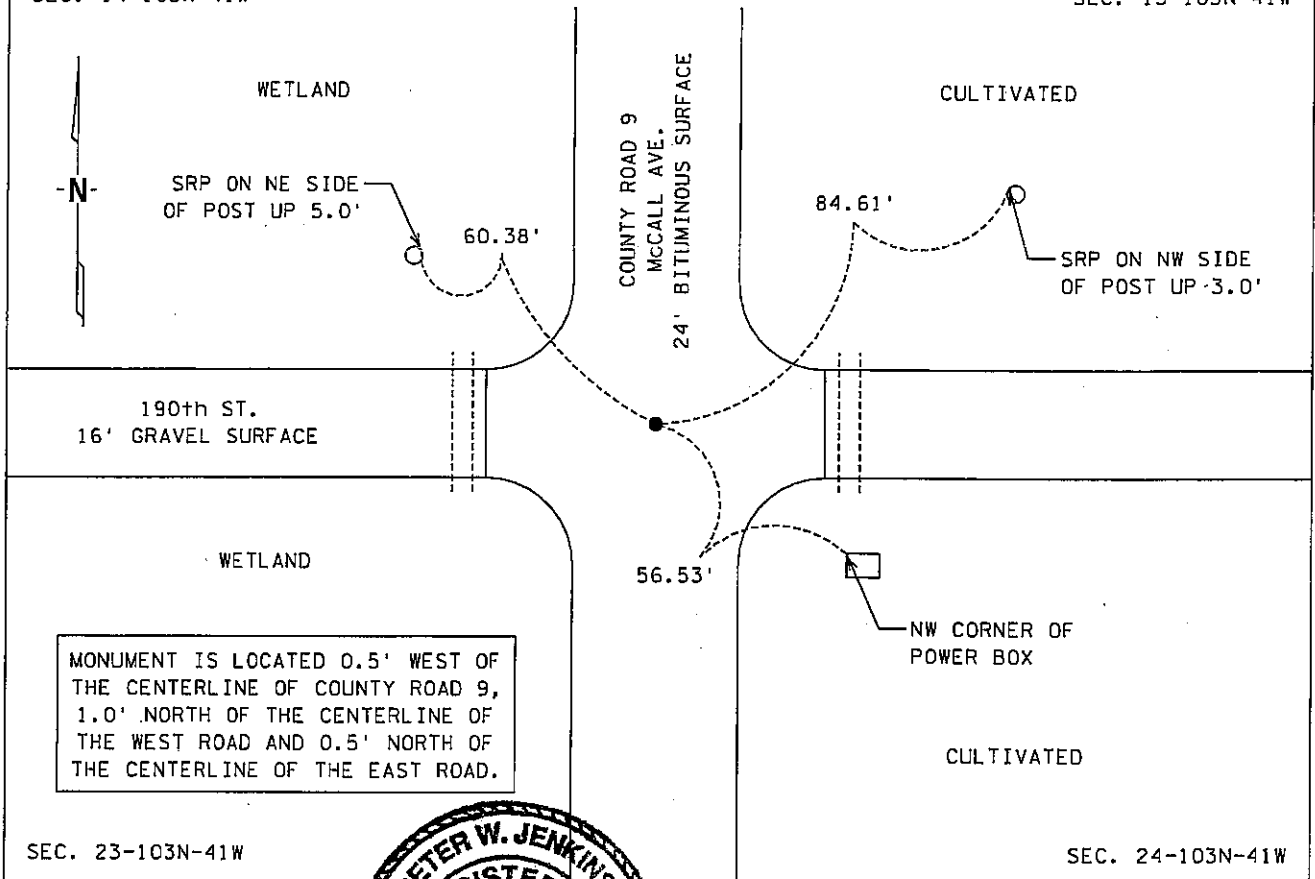
☒ left monument as found, ☐ lowered monument, ☐ removed monument (explain)

☐ On \_\_\_\_\_ set \_\_\_\_\_

SEC. 14-103N-41W

Sketch of reference ties

SEC. 13-103N-41W



Statement of evidence relative to this corner location is on back page

I hereby certify that this document and the data contained herein was prepared under my direct supervision.

Signature Peter W. Jenkins Date 30 Dec 00  
Registration No. 22683

☒ Land surveyor, ☐ Professional Engineer

☐ County Surveyor, ☐ County Engineer

OFFICE OF THE COUNTY RECORDER

County of Nobles

I hereby certify that this document was filed in the Co. Recorders office at 9:00 A .M. on the 17th day of January A.D. 2001

County Recorder Joyce Howard  
By \_\_\_\_\_, Deputy

DOCUMENT NO. 282098

TRACKED 9 COMPARED dm  
PHOTO bw  
FEE nc

Statement of Evidence:

NORTHEAST CORNER  
SECTION 23, TOWNSHIP 103 NORTH, RANGE 41 WEST  
5th PRINCIPAL MERIDIAN, MINNESOTA

- 15 Sept. 1868 -George G. Howe & Richard H.L. Jewett, U.S. Deputy Surveyors, "North bet. Secs. 23 & 24" @ 80.00 chs. "Point for Sec. Cor. in marsh, Witness Cor. 4 chs. South." No ties.
- 23 Aug. 1900 -Nobles County Recorder's Office, Surveyor's Record, Volume A-2, Page 392, by Milton S. Smith, County Surveyor, shows stones at all Gov't Corners for Sec. 23-103-41.
- Circa 1923 -Nobles County Highway Department, Summit Lake Corner Book, shows a stake at the Southwest Corner of Sec. 13-103-41.
- Circa 1953 -Nobles County Highway Department, Summit Lake Corner Book, shows a stake at the Southwest Corner of Sec. 13-103-41.
- Circa 1961 -Nobles County Highway Department, Summit Lake Corner Book, shows a stake at the Southwest Corner of Sec. 13-103-41 with ties: N&D in PP 58.95' SE; N&D in TP 60.47' NW; N&D in CFP 61.55' SW.
- Circa 1980 -Nobles County Highway Department, Summit Lake Corner Book, shows a found stake at the Southwest Corner of Sec. 13-103-41 and set a iron pin with ties: N&D in PP 58.95' SE; N&D in CFP 61.92' SW; Top of VGTCM 60.49' NW.
- Circa 1992 -Nobles County Highway Department, Summit Lake Corner Book, shows a found iron pin at the Southwest Corner of Sec. 13-103-41 and placed P.K. nail after overlay job with ties: N&D in PP 58.95' SE; N&D in CFP 61.95' SW; N&D in VGTCM Post 60.22' NW; N&D in VGTCM Post 84.74' NE.
- 20 July 2000 -MnDOT survey crew found a P.K. nail flush with the surface and 0.5' west of the centerline of County Road 9 and 1.0' north of the centerline of a township road, ties were set and a sketch was made.

The evidence is not conclusive as to the true corner location, however the written, occupational and collateral evidence suggest that this is a reasonable location as to the corner. Additional information regarding the preparation of this certificate can be obtained by contacting: Survey Section, Minnesota Department of Transportation, 501 South Victory Drive, P.O. Box 4039, Mankato, MN 56002-4039.

