

CERTIFICATE OF LOCATION OF GOVERNMENT CORNER

NORTHEAST Corner of Section 26, Township 103N, Range 41W, 5th P.M.

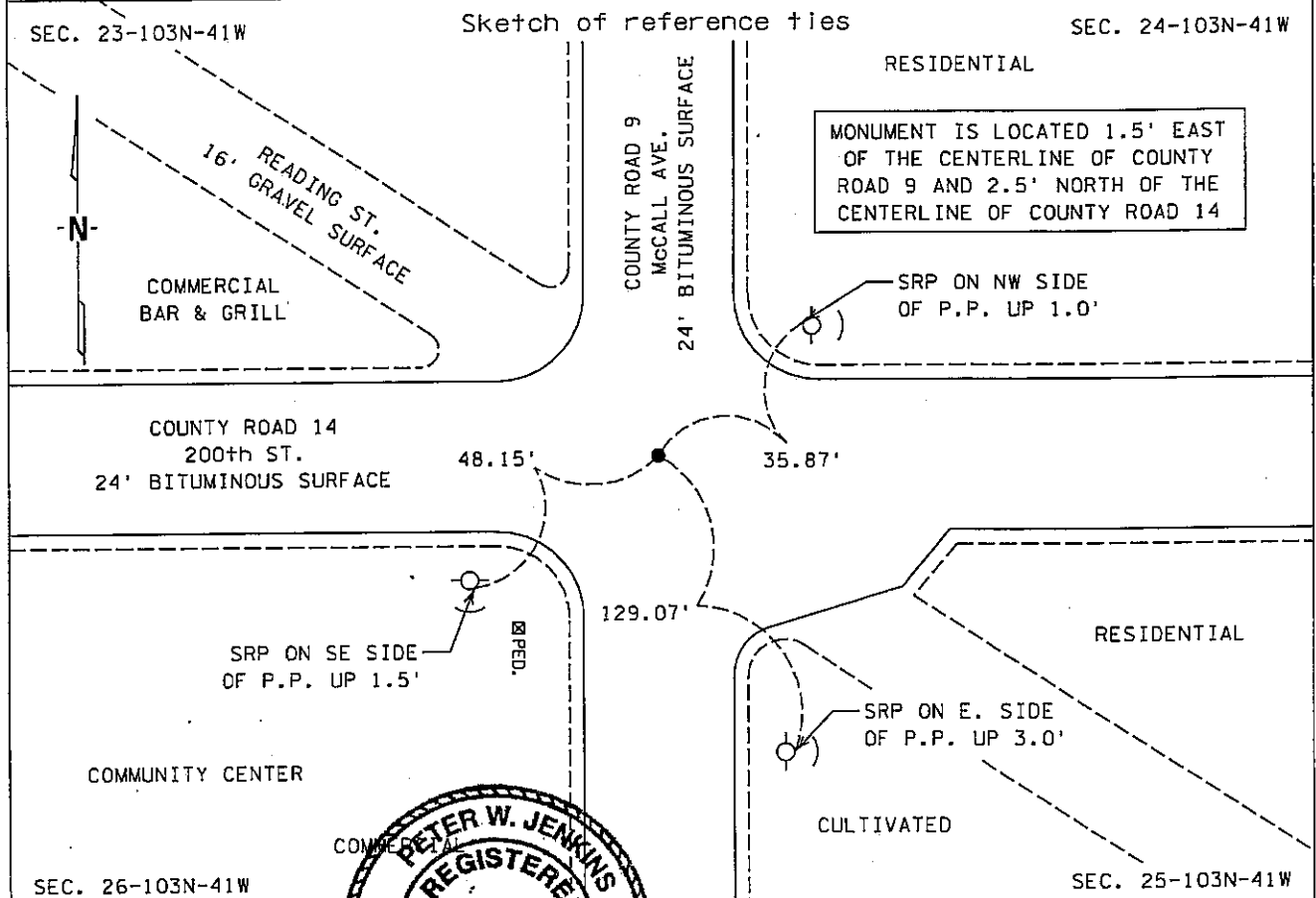
STATE OF MINNESOTA, County of NOBLES

At the corner location shown on the sketch :

☒ On 20 July 2000 found PK NAIL FLUSH

☒ left monument as found, ☐ lowered monument, ☐ removed monument (explain)

☐ On _____ set _____



Statement of evidence relative to this corner location is on back page

I hereby certify that this monument location contained herein was prepared by me under my direct supervision.

Registration No. 22683

☒ Land surveyor, ☐ Professional Engineer

☐ County Surveyor, ☐ County Engineer

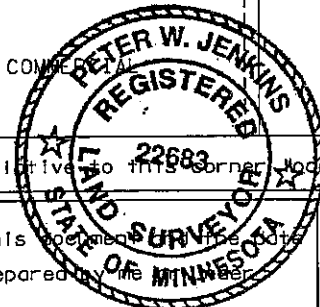
OFFICE OF THE COUNTY RECORDER

County of Nobles

I hereby certify that this document was filed in the Co. Recorders office at 9:10 A.M. on the 17th day of January, A.D., 2001

County Recorder James H. Houten, Deputy

DOCUMENT NO. 282100



TRACKED
 PHOTO
 COMPARED
 PW
 FEE
 71c

Statement of Evidence:

NORTHEAST CORNER
SECTION 26, TOWNSHIP 103 NORTH, RANGE 41 WEST
5th PRINCIPAL MERIDIAN, MINNESOTA

- 15 Sept. 1868 -George G. Howe & Richard H.L. Jewett, U.S. Deputy Surveyors, "North bet. Secs. 25 & 26" @ 80.00 chs. "Set Post in mound with Pits for Cor. to Secs. 23, 24, 25 & 26." No ties.
- 16 Nov. 1897 -Nobles County Recorder's Office, Surveyor's Record, Volume A-2, Page 292, by Milton S. Smith, County Surveyor, shows a stone at the Northeast Corner of Sec. 26-103-41 with a note about the original stake along with a statement about a iron bolt that was placed on the west side of the stone and a distance of 2648.7' west to the North Quarter Corner.
- 20 June 1900 -Nobles County Recorder's Office, Surveyor's Record, Volume A-2, Page 368, by Milton S. Smith, County Surveyor, states that a stone is in place at the Southeast Corner of Sec. 23-103-41.
- 23 Aug. 1900 -Nobles County Recorder's Office, Surveyor's Record, Volume A-2, Page 392, by Milton S. Smith, County Surveyor, shows stones at all Gov't Corners for Sec. 23-103-41.
- 30 Nov. 1901 -Nobles County Recorder's Office, Doc. No. 32129, *PLAT OF THE FIRST ADDITION TO READING*, by Milton S. Smith, County Surveyor, shows a stone at the Southeast Corner of Sec. 23-103-41, with a distance of 1324.3' west to the 1/16th corner.
- 23 May 1912 -Nobles County Recorder's Office, Surveyor's Record, Volume B, Page 22, by William A. Saxon, County Surveyor, shows a stone at the Northeast Corner for Sec. 26-103-41.
- 10 June 1915 -Nobles County Recorder's Office, Surveyor's Record, Volume B, Page 63, by William A. Saxon, County Surveyor, shows a stone at the Northeast Corner for Sec. 26-103-41 with a distance of 2643' west to the North Quarter Corner.
- 26 Sept. 1915 -Nobles County Recorder's Office, Doc. No. 59370, *PLAT OF FAIR'S ADDITION TO READING*, by William A. Saxon, County Surveyor, shows a stone at the Northeast Corner of Sec. 26-103-41.
- Circa 1923 -Nobles County Highway Department, Summit Lake Corner Book, shows a stone at the Southwest Corner of Sec. 24-103-41.
- 12 May 1925 -Nobles County Recorder's Office, Surveyor's Record, Volume B, Page 147, by John S. Palmer, County Surveyor, shows a stone at the Southwest Corner for Sec. 24-103-41.
- Circa 1929 -Nobles County Highway Department, Summit Lake Corner Book, shows a stone at the Southwest Corner of Sec. 24-103-41.
- Circa 1952 -Nobles County Highway Department, Summit Lake Corner Book, shows a stone at the Southwest Corner of Sec. 24-103-41 and that a iron pin was placed.
- 2 Dec. 1957 -Minnesota Highway Department, Right of Way Map for TH 266, SP 5311, shows a spike in place at the Northeast Corner of Sec. 26-103-41 with a distance tie along the section line to the centerline of the highway at 770.3' at engineers station POT 395+58.3.
- Circa 1958 -Nobles County Highway Department, Summit Lake Corner Book, shows a iron pin at the Southwest Corner of Sec. 24-103-41.

NORTHEAST CORNER
SECTION 26, TOWNSHIP 103 NORTH, RANGE 41 WEST
5th PRINCIPAL MERIDIAN, MINNESOTA
Continued

- Circa 1963 -Nobles County Highway Department, Summit Lake Corner Book, shows a iron pin at the Southwest Corner of Sec. 24-103-41 with ties: N&D in PP 35.84' NE; N&D in PP 48.25' SW; N&D in Sign Post 76.40' NW.
- Circa 1980 -Nobles County Highway Department, Summit Lake Corner Book, shows a found iron pin at the Southwest Corner of Sec. 24-103-41 with ties: N&D in PP 35.80' NE; N&D in PP 48.42' SW; N&D in PP 131.84' SE.
- Circa 1992 -Nobles County Highway Department, Summit Lake Corner Book, shows a found iron pin at the Southwest Corner of Sec. 24-103-41 with ties: N&D in PP 34.78' NE; N&D in PP 48.43' SW; N&D in PP 131.24' SE; N&D in Tree 53.73' SW.
- 20 July 2000 -MnDOT survey crew found a P.K. nail flush with the surface and 1.5' east of the centerline of County Road 9 and 2.5' north of the centerline of County Road 14, ties were checked from county records and a sketch was made.

The evidence is reasonably conclusive that the true corner location has been perpetuated with enough care that the corner can be accepted without argument. Additional information regarding the preparation of this certificate can be obtained by contacting: Survey Section, Minnesota Department of Transportation, 501 South Victory Drive, P.O. Box 4039, Mankato, MN 56002-4039.

