

CERTIFICATE OF LOCATION OF GOVERNMENT CORNER

NORTHEAST Corner of Section 27, Township 103N, Range 41W, 5th P.M.

STATE OF MINNESOTA, County of NOBLES

At the corner location shown on the sketch :

☒ On 20 July 2000 found PK NAIL FLUSH

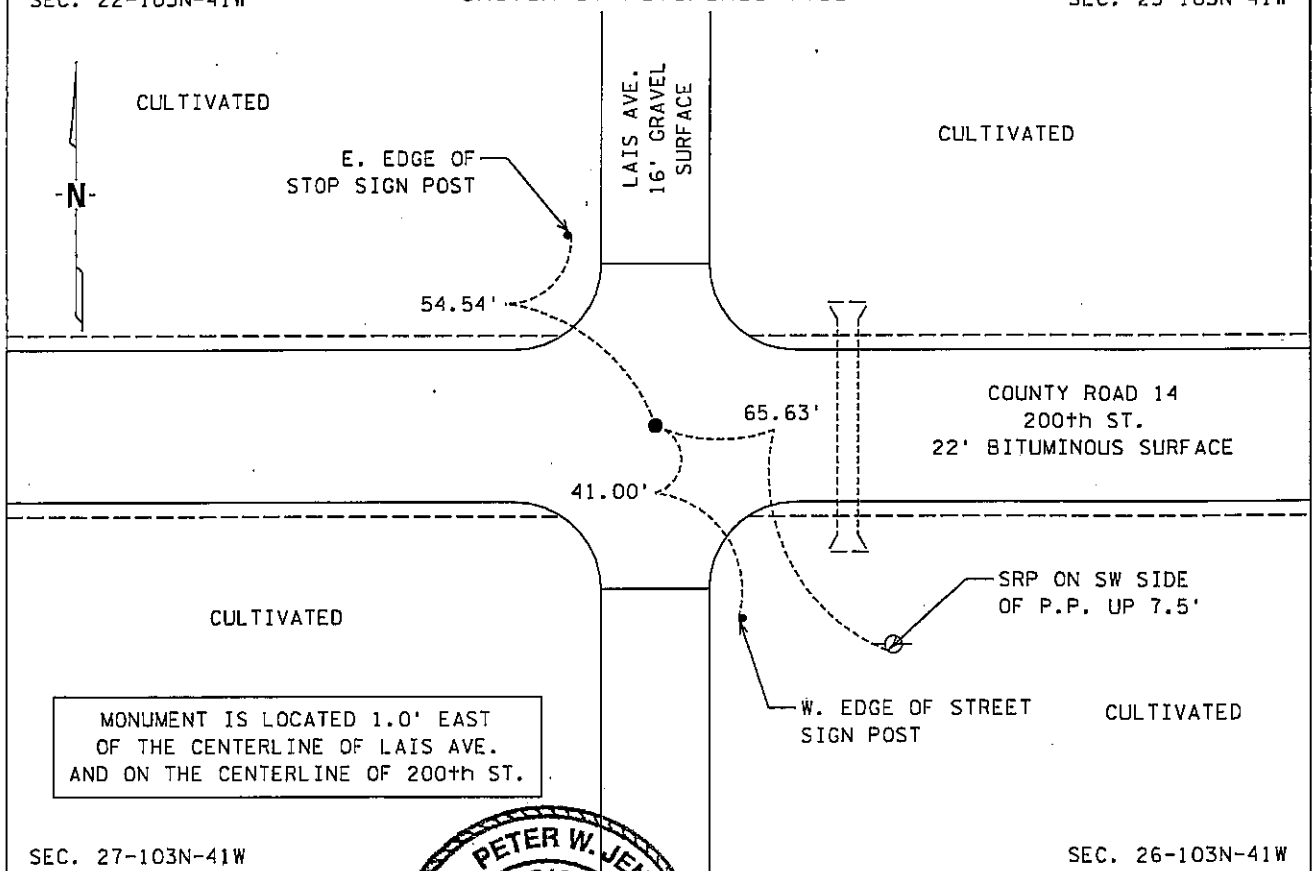
☒ left monument as found, ☐ lowered monument, ☐ removed monument (explain)

☐ On _____ set _____

SEC. 22-103N-41W

Sketch of reference ties

SEC. 23-103N-41W



SEC. 27-103N-41W

SEC. 26-103N-41W

Statement of evidence relative to this corner location is on back page

I hereby certify that this document and the data contained herein was prepared by Peter W. Jenkins under my direct supervision.

Signature Peter W. Jenkins Date 30 Dec 00
Registration No. 22683

☒ Land surveyor, ☐ Professional Engineer
☐ County Surveyor, ☐ County Engineer

OFFICE OF THE COUNTY RECORDER
County of Nobles

I hereby certify that this document was filed in the Co. Recorders office at 9:15 A.M. on the 17th day of January A.D. 2001

County Recorder James Howard
By _____, Deputy

DOCUMENT NO. 282101

TRACKED & COMPARED
PHOTO LOW
FEE 20.00

Statement of Evidence:

NORTHEAST CORNER
SECTION 27, TOWNSHIP 103 NORTH, RANGE 41 WEST
5th PRINCIPAL MERIDIAN, MINNESOTA

- 18 Sept. 1868 -George G. Howe & Richard H.L. Jewett, U.S. Deputy Surveyors, "North bet. Secs. 26 & 27" @ 80.00 chs. "Post in mound with Pits for Cor. to Secs. 22, 23, 26 & 27." No ties.
- 16 Nov. 1897 -Nobles County Recorder's Office, Surveyor's Record, Volume A-2, Page 292, by Milton S. Smith, County Surveyor, shows a stone at the Northwest Corner for Sec. 26-103-41 with a distance of 2648.7' west to the North Quarter Corner.
- 20 June 1900 -Nobles County Recorder's Office, Surveyor's Record, Volume A-2, Page 368, by Milton S. Smith, County Surveyor, shows a stone at the Southwest Corner of Sec. 23-103-41 with a distance of 2648.7' east to the South Quarter Corner.
- 18 Aug. 1900 -Nobles County Recorder's Office, Surveyor's Record, Volume A-2, Page 388, by Milton S. Smith, County Surveyor, shows a stone at the Southeast Corner of Sec. 22-103-41.
- 23 Aug. 1900 -Nobles County Recorder's Office, Surveyor's Record, Volume A-2, Page 392, by Milton S. Smith, County Surveyor, shows stones at all Gov't Corners for Sec. 23-103-41.
- 10 June 1915 -Nobles County Recorder's Office, Surveyor's Record, Volume B, Page 63, by William A. Saxon, County Surveyor, shows a stone at the Northwest Corner of Sec. 26-103-41 with a distance of 2643' east to the North Quarter Corner.
- Circa 1929 -Nobles County Highway Department, Summit Lake Corner Book, shows a stone at the Southwest Corner of Sec. 23-103-41.
- Circa 1960 -Nobles County Highway Department, Summit Lake Corner Book, shows a iron pin at the Southwest Corner of Sec. 23-103-41.
- Circa 1962 -Nobles County Highway Department, Summit Lake Corner Book, shows a iron pin at the Southwest Corner of Sec. 23-103-41 with ties: N&D in PP 59.95' SE; N&D in CFP 69.32' NE.
- 8 Oct. 1984 -Martin Land Surveying, Inc., Worthington, Minnesota, a survey in Sec. 22-102-41, by Gary D. Martin, RLS # 12967, shows a found iron pin at the Southeast Corner with ties: PP 59.95' SE; CFP 60.32' NE.
- Circa 1993 -Nobles County Highway Department, Summit Lake Corner Book, shows a found a iron pin at the Southwest Corner of Sec. 23-103-41.
- Circa 1994 -Nobles County Highway Department, Summit Lake Corner Book, states that a P.K. nail was set after a overlay of the road for the Southwest Corner of Sec. 23-103-41 with ties: N&D in PP 63.75' SE; N&D in Stop Sign Post 52.90' SE; Top Bolt Stop Sign Post 54.68' NW.
- 20 July 2000 -MnDOT survey crew found a P.K. nail flush with the surface and 1.0' east of the centerline of Lais Avenue and on centerline of County Road 14, ties were set and a sketch was made.

The evidence is not conclusive as to the true corner location, however the written, occupational and collateral evidence suggest that this is a reasonable location as to the corner. Additional information regarding the preparation of this certificate can be obtained by contacting: Survey Section, Minnesota Department of Transportation, 501 South Victory Drive, P.O. Box 4039, Mankato, MN 56002-4039.