

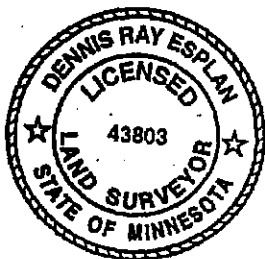
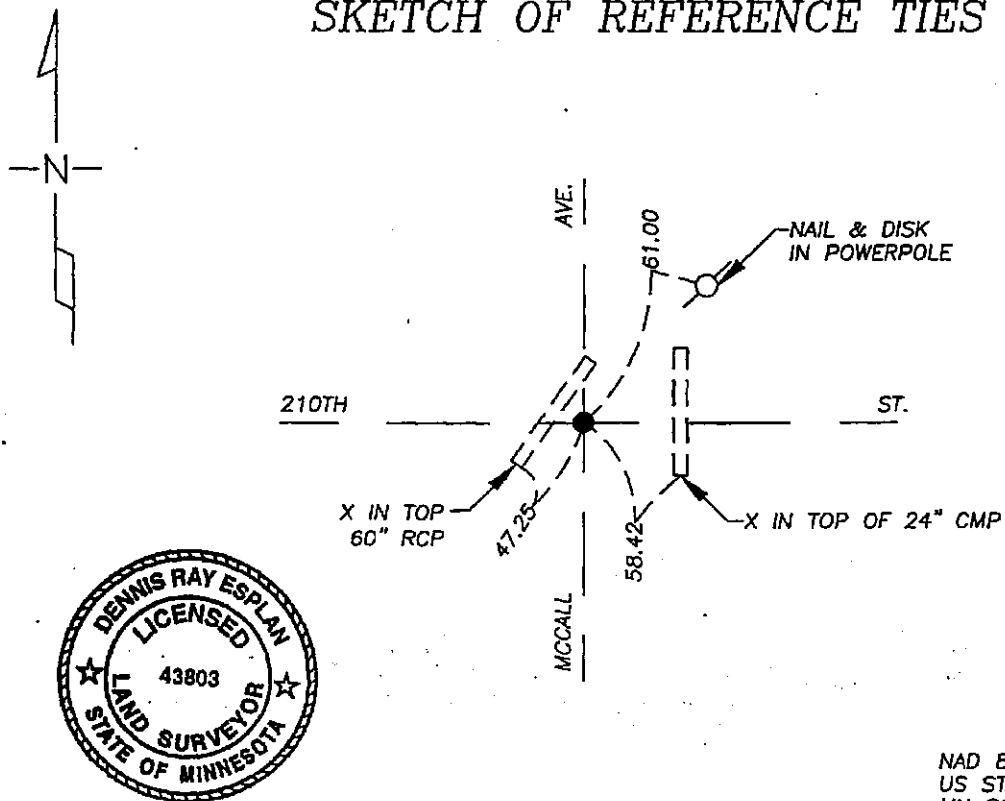
# CERTIFICATE OF LOCATION OF GOVERNMENT CORNER

Northeast Corner of Section 35, Township 103N, Range 41W, 5th P.M.  
STATE OF MINNESOTA, County of Nobles

At the corner location shown on the sketch

- ☒ On 9/09/05 found a Signal over iron monument that fits with county ties.
- ☒ left monument as found    ☐ lowered monument,    ☐ removed monument (explain)
- ☒ On 9/09/05 placed a Survey marker spike using county ties.

## SKETCH OF REFERENCE TIES



NAD 83 (1996)  
US STATE PLANE 1983  
MN SOUTH  
583987.53N  
2171427.30E

Statement of evidence relative to this corner location is on page 2.

I hereby certify that this document and the data contained herein was prepared by me or under my direct supervision.

Dennis Ray Esplan 11/04/05  
SIGNATURE DATE

MN. LICENSE NO. 43803

- ☒ Land Surveyor,    ☐ Professional Engineer  
☐ County Surveyor,    ☐ County Engineer

### OFFICE OF THE COUNTY RECORDER

I hereby certify that this document was filed in the Co. Recorder's Office at \_\_\_\_\_ on the \_\_\_\_\_ day of \_\_\_\_\_

County Recorder \_\_\_\_\_  
By \_\_\_\_\_, Deputy  
DOCUMENT NO. \_\_\_\_\_

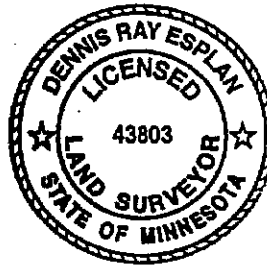
**Statement of Evidence**

1868 Original Township Subdivision was surveyed by Jewett & Howe.

1915 & 1917 Nobles Co. Hwy. Dept. records indicate a stone was found.

1963, 1964, 1966 & 1986 Nobles Co. Hwy. Dept. records indicate an iron pin was found.

2005 Gerald Vickerman PLS and Jeremy Lund, with Zieske Land Surveying, set survey marker spike over signal as per ties from county highway department.



DOCUMENT NUMBER A 306936

Certified, Filed and or Recorded on  
NOV. 10, 2005 AT 11:40:00AM

*Lynn M. Wilson*

TRACKED \_\_\_\_\_  
PERTO *D L* \_\_\_\_\_  
FEE \_\_\_\_\_

COMPARED \_\_\_\_\_

NOBLES COUNTY RECORDER  
LYNN M. WILSON  
507-372-8216