

CERTIFICATE OF LOCATION OF GOVERNMENT CORNER

NORTHEAST Corner of Section 4, Township 103N, Range 41W, 5TH P.M.

STATE OF MINNESOTA, County of NOBLES

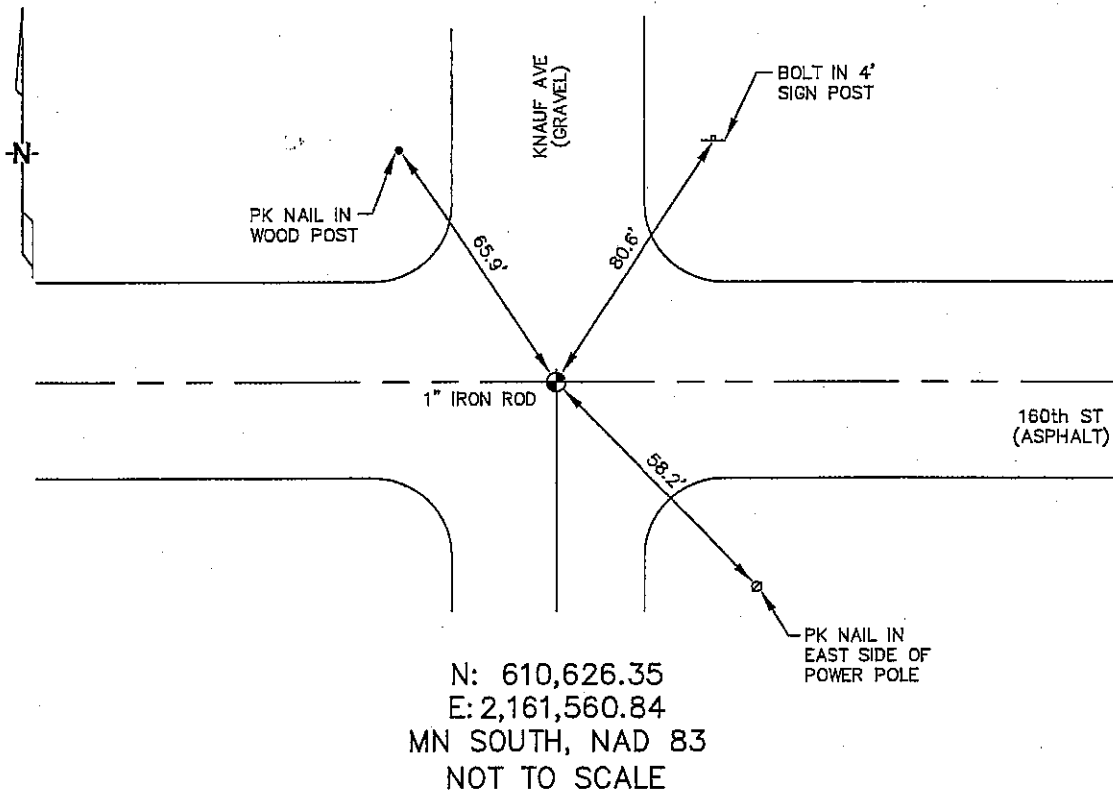
At the corner location shown on the sketch :

On 2/21/2006 found 1" IRON ROD IN ASPHALT AT INTERSECTION.

left monument as found, lowered monument, removed monument (explain)

On _____ set _____

Sketch of reference ties



Statement of evidence relative to this corner location is on back page

I hereby certify that this document and the data contained herein was prepared by me or under my direct supervision.

Thomas J. Est 5/9/06
Date

Registration No. 44563
 Land Surveyor, Professional Engineer
 County Surveyor, County Engineer

OFFICE OF THE COUNTY RECORDER

County of _____

I hereby certify that this document was filed in the Co. Recorders office at _____ .M. on the day of _____ A.D. , 20

County Recorder _____
By _____, Deputy

DOCUMENT NO. _____

STATEMENT OF EVIDENCE:

NORTHEAST CORNER, SECTION 4, T.103N., R41W.,
NOBLES COUNTY, MINNESOTA

- 1867 T.B. Walker, US. Deputy Surveyor, monumented township lines.
- 2/21/2006 Ulteig Engineers, Inc., Survey Crew, Dennis Lavallie Party Chief
found a 1" iron rod in the asphalt at the intersection.
Ties: NW-65.9' to PK nail in wood post;
NE-80.6' to bolt in steel, Sign post;
SE-58.2' to PK nail in E side of wood, power pole.