

# CERTIFICATE OF LOCATION OF GOVERNMENT CORNER

NORTHEAST Corner of Section 5 Township 103N Range 41W 5th P.M.

STATE OF MINNESOTA, County of NOBLES

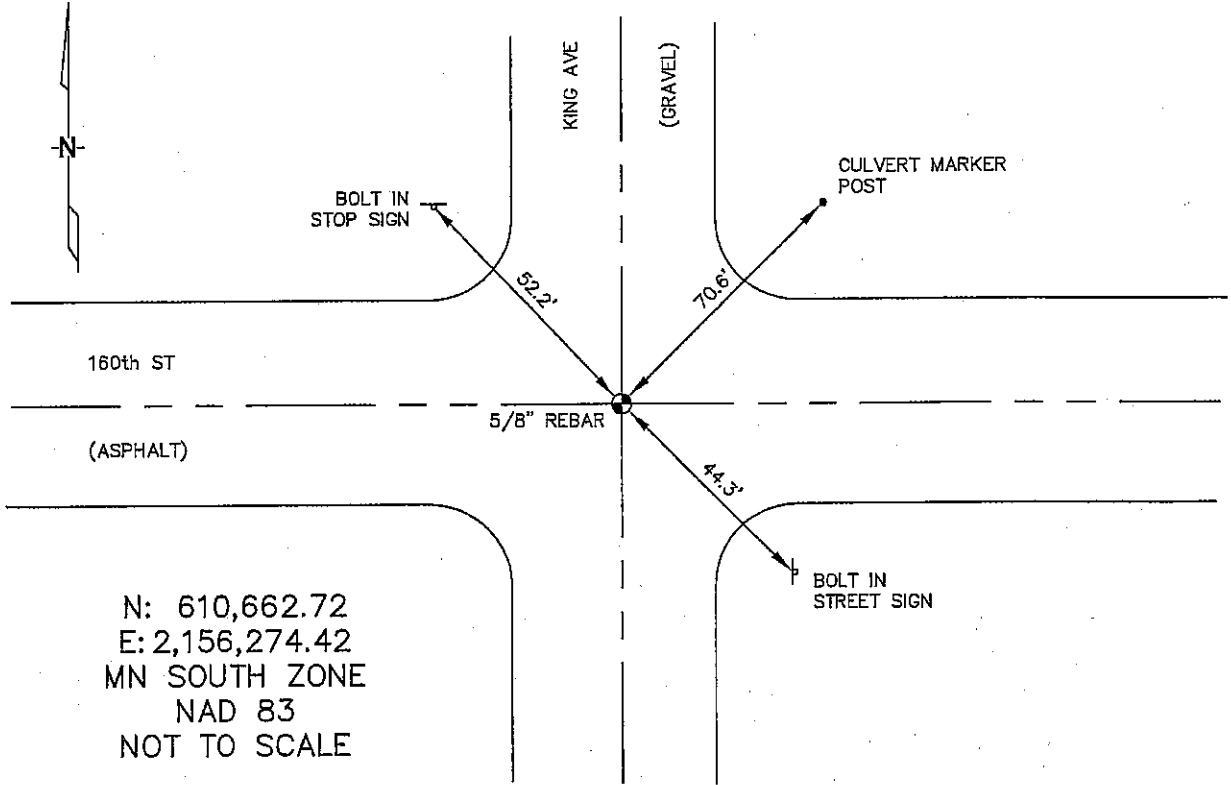
At the corner location shown on the sketch :

On 2/23/2006 found A 5/8" REBAR IN ASPHALT AT INTERSECTION.

left monument as found,  lowered monument,  removed monument (explain)

On \_\_\_\_\_ set \_\_\_\_\_

Sketch of reference ties



Statement of evidence relative to this corner location is on back page

I hereby certify that this document and the data contained herein was prepared by me or under my direct supervision.

James V. Zeff 5/10/06  
Signature Date

Registration No. 44563

Land Surveyor,  Professional Engineer

County Surveyor,  County Engineer

## OFFICE OF THE COUNTY RECORDER

County of \_\_\_\_\_

I hereby certify that this document was filed in the Co. Recorders office at \_\_\_\_\_ M. on the \_\_\_\_\_ day of \_\_\_\_\_ A.D. , 20

County Recorder \_\_\_\_\_

By \_\_\_\_\_, Deputy

DOCUMENT NO. \_\_\_\_\_

STATEMENT OF EVIDENCE:

NORTHEAST CORNER, SECTION 5, T. 103 N., R. 41 W.,  
NOBLES COUNTY, MINNESOTA

- 1867 T.B. Walker, US. Deputy Surveyor, monumented township line.
- 2/23/2006 Ulteig Engineers, Inc., Survey Crew, Dennis Lavallie, Party Chief, found a 5/8" rebar in the asphalt at the intersection.  
Ties: NE-70.6' to steel culvert marker post;  
SE-44.3' to a steel bolt in a steel street sign post;  
NW-52.2' to steel bolt in a steel stop sign post.