

# CERTIFICATE OF LOCATION OF GOVERNMENT CORNER

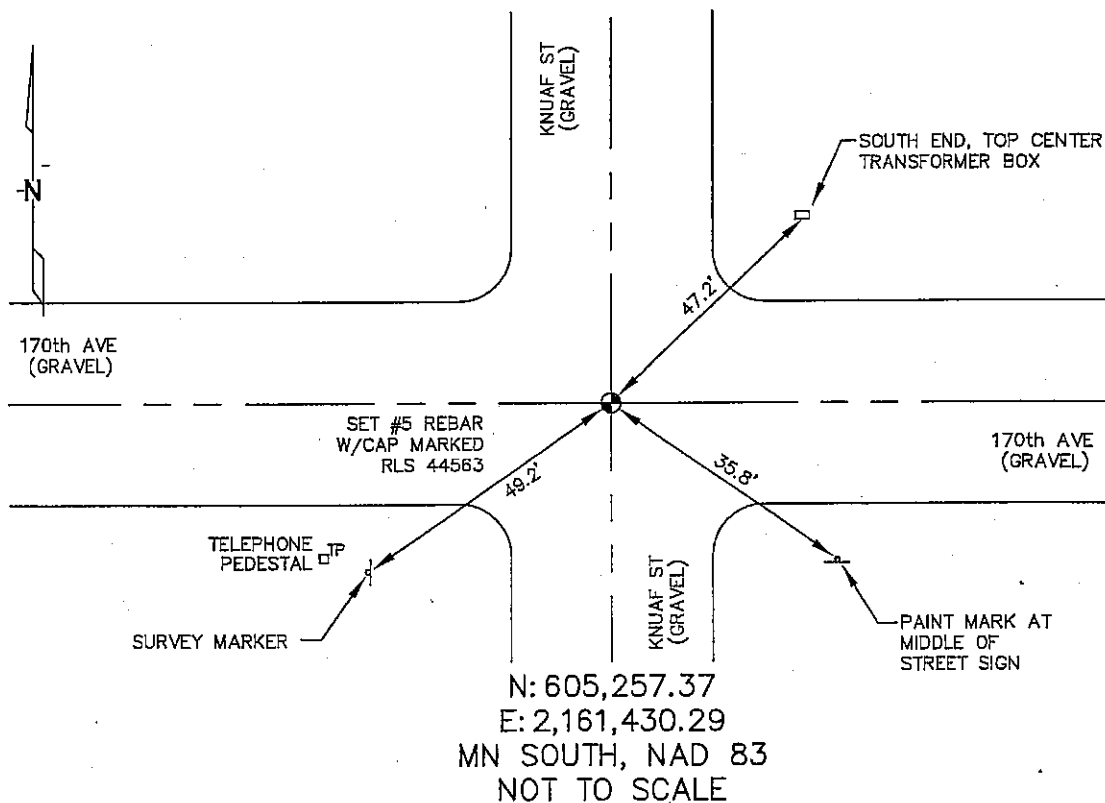
NORTHWEST Corner of Section 10 Township 103N Range 41W 5th P.M.

STATE OF MINNESOTA, County of NOBLES

At the corner location shown on the sketch :

- ☐ On \_\_\_\_\_ found \_\_\_\_\_
- ☐ left monument as found, ☐ lowered monument, ☐ removed monument (explain)
- ☒ On 02/27/2006 set 5/8" REBAR WITH CAP: RLS 44563

## Sketch of reference ties



Statement of evidence relative to this corner location is on back page

I hereby certify that this document and the data contained herein was prepared by me or under my direct supervision.

Thomas V. Zeff  
Thomas V. Zeff

6/8/06  
Date

Registration No. 44563

- ☒ Land Surveyor, ☐ Professional Engineer
- ☐ County Surveyor, ☐ County Engineer

## OFFICE OF THE COUNTY RECORDER

County of \_\_\_\_\_

I hereby certify that this document was filed in the Co. Recorders office at \_\_\_\_\_ M. on the \_\_\_\_\_ day of \_\_\_\_\_ A.D. , 20

County Recorder \_\_\_\_\_  
By \_\_\_\_\_, Deputy

DOCUMENT NO. \_\_\_\_\_

STATEMENT OF EVIDENCE:

NORTHWEST CORNER, SECTION 10, T.103N., R.41W.,  
NOBLES COUNTY, MINNESOTA

- 1868 Jewett & Howe, US. Deputy Surveyors, monumented corner.
- 2/27/2006 Ulteig Engineers, Inc., Survey Crew, Brain Payne Party Chief,  
found nothing. Set a 5/8" rebar with cap: RLS 44563 at the  
C/L of intersection.  
Ties: NE-47.2' to top, south end, electrical transformer box;  
SE-35.8' to paint mark in middle of Street Sign;  
SW-49.2' to survey marker.