

CERTIFICATE OF LOCATION OF GOVERNMENT CORNER

NORTHWEST Corner of Section 15, Township 103, Range 41, 5TH P.M.

STATE OF MINNESOTA, County of NOBLES

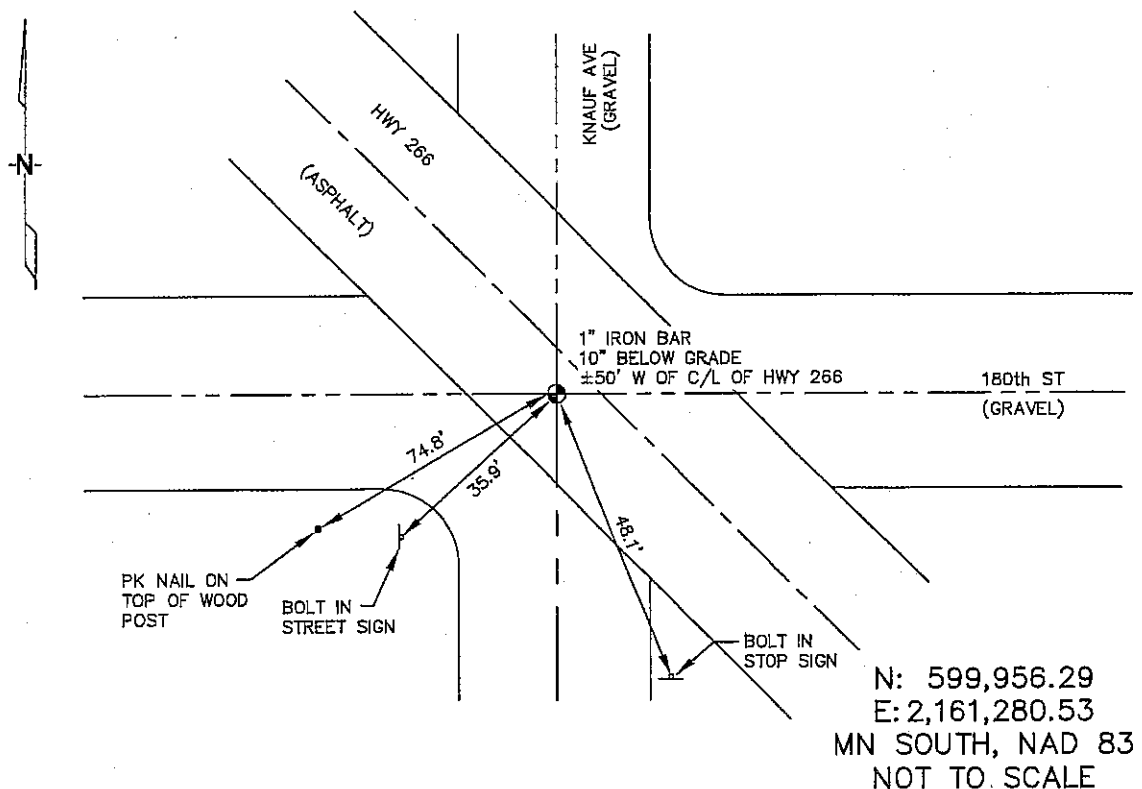
At the corner location shown on the sketch :

☒ On 2/22/2006 found 1" IRON BAR, 10" BELOW GRADE, ±50' WEST
OF C/L OF HWY 266.

☒ left monument as found, ☐ lowered monument, ☐ removed monument (explain)

☐ On _____ set _____

Sketch of reference ties



Statement of evidence relative to this corner location is on back page

I hereby certify that this document and the data contained herein was prepared by me or under my direct supervision.

Thomas V. Zeff 5/10/06
Thomas V. Zeff Date
Registration No. 44563

☒ Land Surveyor, ☐ Professional Engineer

☐ County Surveyor, ☐ County Engineer

OFFICE OF THE COUNTY RECORDER

County of _____

I hereby certify that this document was filed in the Co. Records office at _____ M. on the day of _____ A.D., 20

County Recorder _____

By _____, Deputy

DOCUMENT NO. _____

STATEMENT OF EVIDENCE:

NORTHWEST CORNER, SECTION 15, T. 103 N., R. 41 W.,
NOBLES COUNTY, MINNESOTA

1868 Jewett & Howe, US. Deputy Surveyors, monumented corner.

2/22/2006 Ulteig Engineers, Inc. Survey Crew, Dennis Lavallie Party Chief, found
a 1" iron bar, 10" below grade, $\pm 50'$ west from the C/L of Hwy 266.

Ties: SW-74.8' to PK nail on top of 12"Ø post;

SW-35.9' to an iron "Street Sign" post;

SE-48.1' to an iron bolt in "Stop Sign" post.