

# CERTIFICATE OF LOCATION OF GOVERNMENT CORNER

NORTHWEST Corner of Section 22 Township 103N, Range 41W, 5th P.M.

STATE OF MINNESOTA, County of NOBLES

At the corner location shown on the sketch :

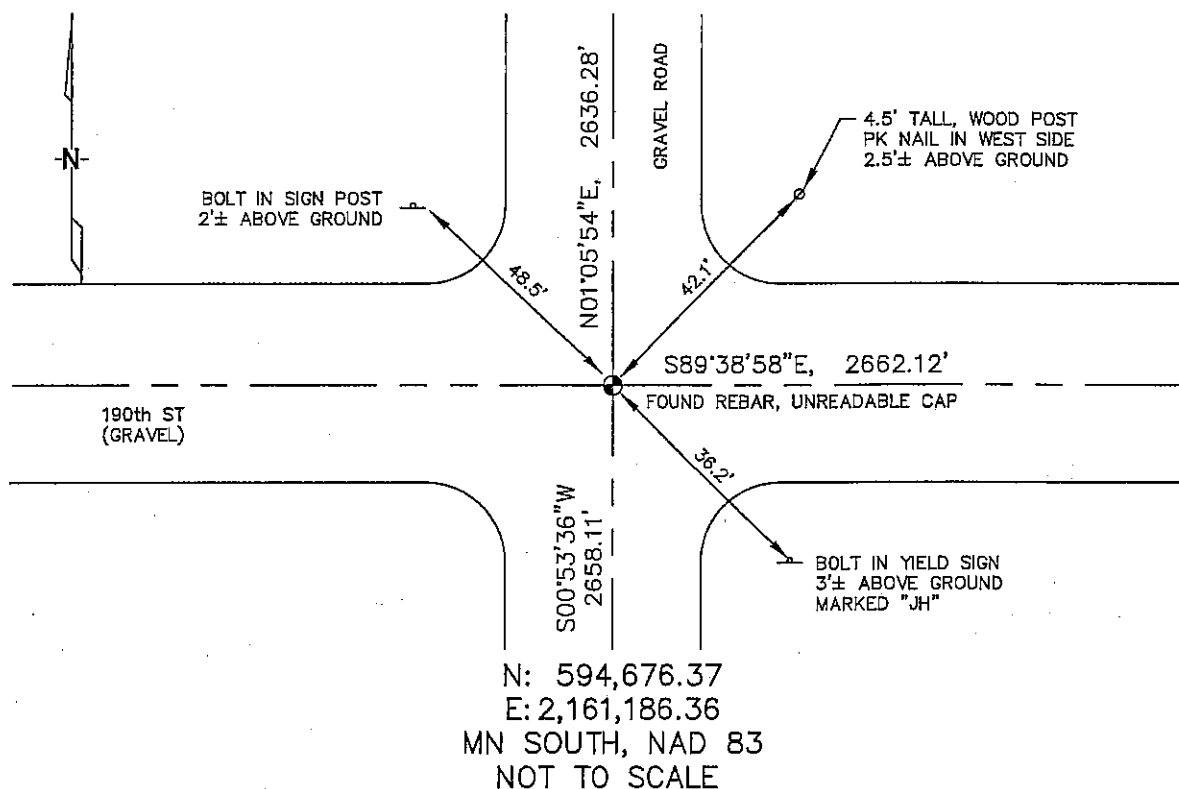
☒ On 2/21/2006 found REBAR WITH UNREADABLE CAP, AT

INTERSECTION OF GRAVEL ROADS.

☒ left monument as found, ☐ lowered monument, ☐ removed monument (explain)

☐ On \_\_\_\_\_ set \_\_\_\_\_

## Sketch of reference ties



Statement of evidence relative to this corner location is on back page

I hereby certify that this document and the data contained herein was prepared by me or under my direct supervision.

*James V. Jeff* 5/9/06  
Signature Date

Registration No. 44563

☒ Land Surveyor, ☐ Professional Engineer

☐ County Surveyor, ☐ County Engineer

## OFFICE OF THE COUNTY RECORDER

County of \_\_\_\_\_

I hereby certify that this document was filed in the Co. Recorders office at \_\_\_\_\_ M. on the \_\_\_\_\_ day of \_\_\_\_\_ A.D. , 20

County Recorder \_\_\_\_\_  
By \_\_\_\_\_, Deputy

DOCUMENT NO. \_\_\_\_\_

STATEMENT OF EVIDENCE:

NORTHWEST CORNER, SECTION 22, T. 103 N., R. 41 W.,  
NOBLES COUNTY, MINNESOTA

1868 Jewett & Howe, US. Deputy Surveyors, monumented corner.

2/21/2006 Ulteig Engineers, Inc., Survey Crew, Dennis Lavallie Party Chief, found a rebar with an unreadable cap at the intersection of the gravel roads.

Ties: NW-48.5' to bolt in sign post, 2'± above ground;  
SE-36.2' to bolt in Yield Sign post, 3'± above ground;  
NE-42.1' to PK Nail in wood post, 2.5'± above ground;  
N-2636.28' to West 1/4 corner, Section 15;  
S-2658.11' to West 1/4 corner, Section 22;  
E-2662.12' to North 1/4 corner, Section 22.