

CERTIFICATE OF LOCATION OF GOVERNMENT CORNER

NORTHWEST Corner of Section 6, Township 103, Range 41, 5TH P.M.

STATE OF MINNESOTA, County of NOBLES

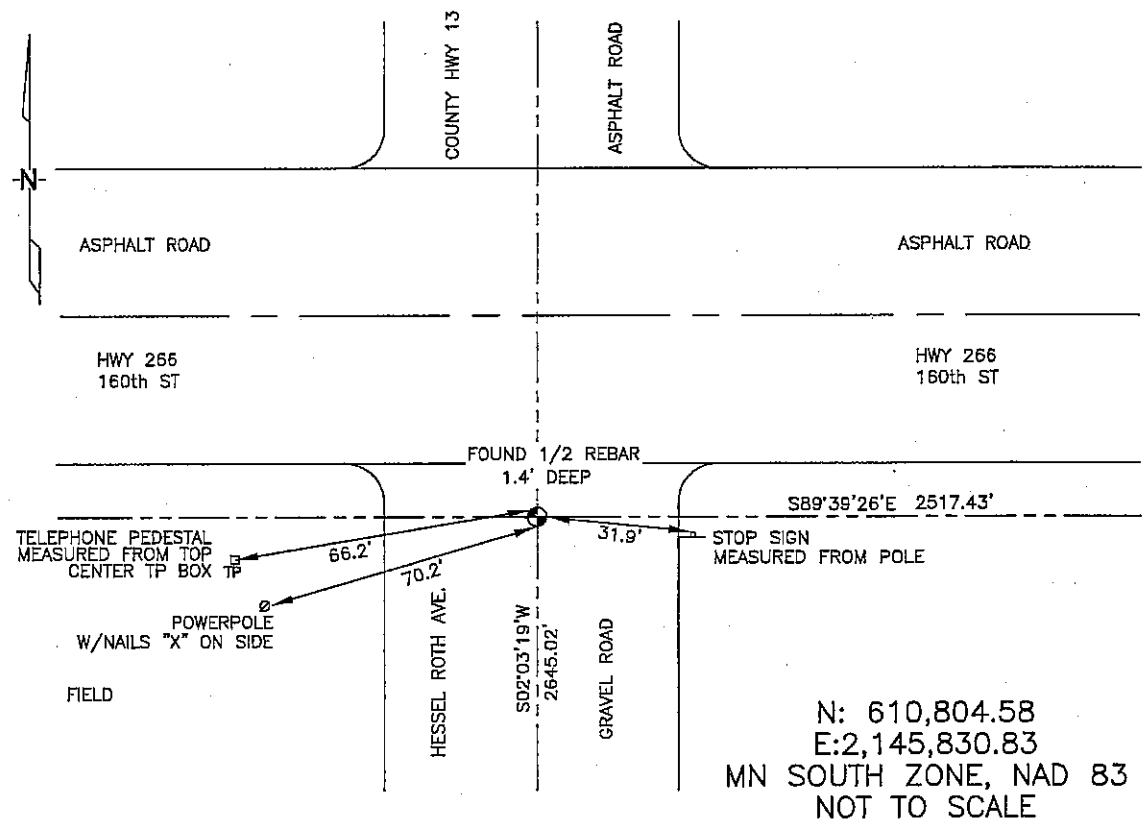
At the corner location shown on the sketch :

On 3/8/2006 found 1/2" REBAR, 1.4' DEEP IN GRAVEL PORTION OF HESSEL ROTH AVENUE.

left monument as found, lowered monument, removed monument (explain)

On _____ set _____

Sketch of reference ties



Statement of evidence relative to this corner location is on back page

I hereby certify that this document and the data contained herein was prepared by me or under my direct supervision.

Thomas V. Zell 5/25/06
Signature Date

Registration No. 44563
 Land Surveyor, Professional Engineer
 County Surveyor, County Engineer

OFFICE OF THE COUNTY RECORDER
County of _____

I hereby certify that this document was filed in the Co. Recorders office at _____ M. on the _____ day of _____ A.D. , 20

County Recorder _____
By _____, Deputy

DOCUMENT NO. _____

STATEMENT OF EVIDENCE:

NORTHWEST CORNER, SECTION 6, T. 103 N., R. 41 W.,
NOBLES COUNTY, MINNESOTA

- 1868 T.B. Walker, US. Deputy Surveyors, monumented township lines.
- 1900 Nobles Co. set stone, no ties.
- 1911 Nobles Co. found stone, no ties.
- 1923 Nobles Co. found stone, no ties.
- 1944 Nobles Co. found stone, no ties.
- 1951 Nobles Co. set stone, placed wood stake next to it, or on top of stone; no ties.
- 3/09/2006 Ulteig Engineers, Inc., Survey Crew, Brian Payne Party Chief,
found a 1/2" rebar, 1.4' deep in gravel portion of Hessel Roth Ave.
Ties: SW-66.2' to top, center, telephone pedestal.
SW-70.2' to nailed "X" on side of power pole.
SE-31.9' to stop sign pole.
E-2517.43' to North 1/4 corner, Section 6.
S-2645.02' to West 1/4 Corner, Section 6.