

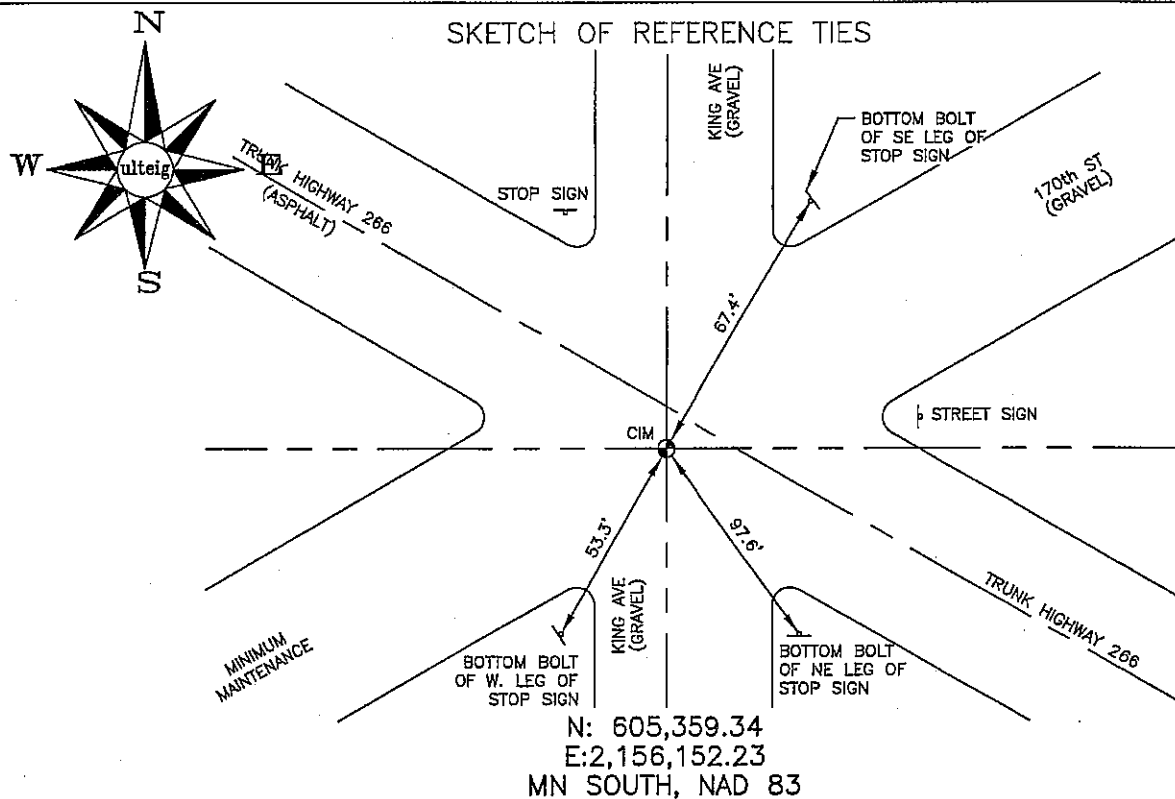
CERTIFICATE OF LOCATION OF GOVERNMENT CORNER

NORTHWEST Corner of Section 9, Township 103N, Range 41W, 5th P.M.
STATE OF MINNESOTA, County of NOBLES

At the corner location shown on the sketch:

☒ On 02/28/2006 found a CAST IRON MONUMENT IN A GRAVEL ROAD.
DATE

☐ left monument as found, ☐ lowered monument, ☐ removed monument (explain)
☐ On _____ placed a _____
DATE



NOT TO SCALE

BEARING SYSTEM IS BASED ON THE MN STATE PLANE COORDINATE SYSTEM, SOUTH ZONE, 1983 NAD.

Statement of evidence relative to this corner location is on back of page.

I hereby certify that this document and the data contained herein was prepared by me or under my direct supervision.

Thomas V. Zeff
Thomas V. Zeff

5/9/06
DATE

Registration No. 44563

☒ Land Surveyor, ☐ Professional Engineer
☐ County Surveyor, ☐ County Engineer

OFFICE OF THE COUNTY RECORDER

County of _____

I hereby certify that this document was filed in the Co. Recorders office at _____ .M. on the _____ day of _____ A.D., 20____

County Recorder _____

By _____, Deputy

DOCUMENT NO. _____

STATEMENT OF EVIDENCE:

NORTHWEST CORNER, SECTION 9, T.103N., R41W.,
NOBLES COUNTY, MINNESOTA

1868

Jewett & Howe, U.S. Deputy Surveyors.
North between Sections 8 & 9 at 80 chains.

02/27/2006:

Ulteig Engineering, Inc., Survey Crew, Brian Payne,
Party Chief, found a cast iron monument near the
center line intersection of the three roads.
Ties: NE-67.4' to bottom bolt in SE leg of Stop Sign;
SE-97.6' to bottom bolt in NE leg of Stop Sign;
SW-53.3' to bottom bolt in W leg of Stop Sign.