

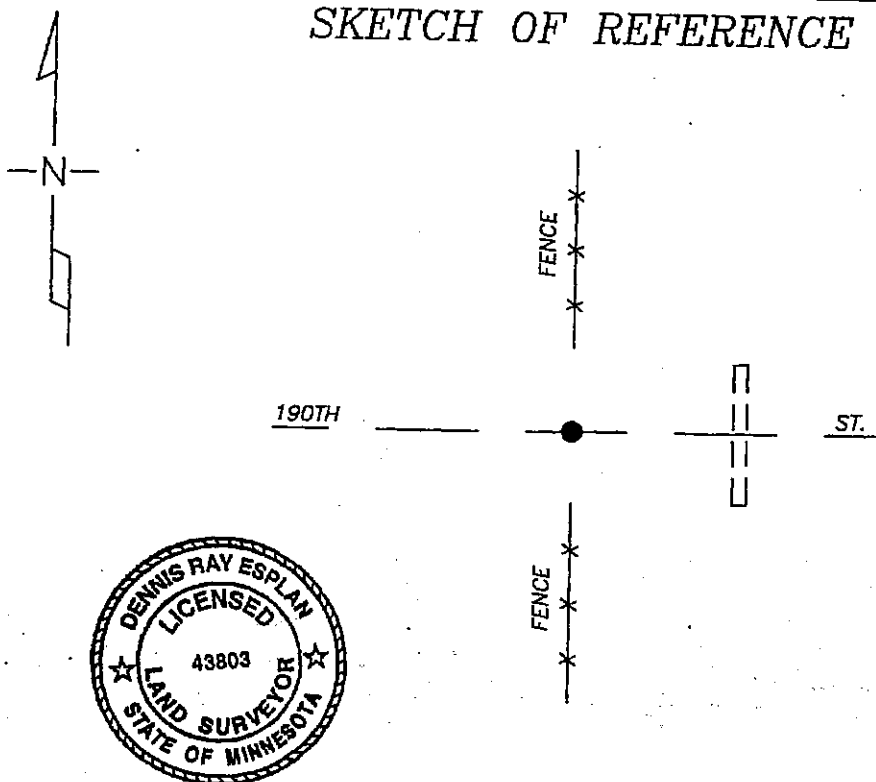
# CERTIFICATE OF LOCATION OF GOVERNMENT CORNER

South 1/4 Corner of Section 14, Township 103N, Range 41W, 5th P.M.  
 STATE OF MINNESOTA, County of Nobles

At the corner location shown on the sketch

- ☒ On 9/09/05 found a Pointed Stone 16" deep on @ road, 2' west of fence south and in line with fence north.  
☐ left monument as found    ☐ lowered monument,    ☐ removed monument (explain)
- ☒ On 9/09/05 placed a 1" Iron Pipe with red survey cap #43803 over top of stone.

## SKETCH OF REFERENCE TIES



NAD 83 (1996)  
 US STATE PLANE 1983  
 MN SOUTH  
 594579.15N  
 2169124.18E

Statement of evidence relative to this corner location is on page 2.

I hereby certify that this document and the data contained herein was prepared by me or under my direct supervision.

Dennis Esplan  
 SIGNATURE

11/04/05  
 DATE

MN. REGISTRATION NO. 43803

- ☒ Land Surveyor,    ☐ Professional Engineer  
☐ County Surveyor,    ☐ County Engineer

### OFFICE OF THE COUNTY RECORDER

I hereby certify that this document was filed in the Co. Recorder's Office at \_\_\_\_\_ on the \_\_\_\_\_ day of \_\_\_\_\_

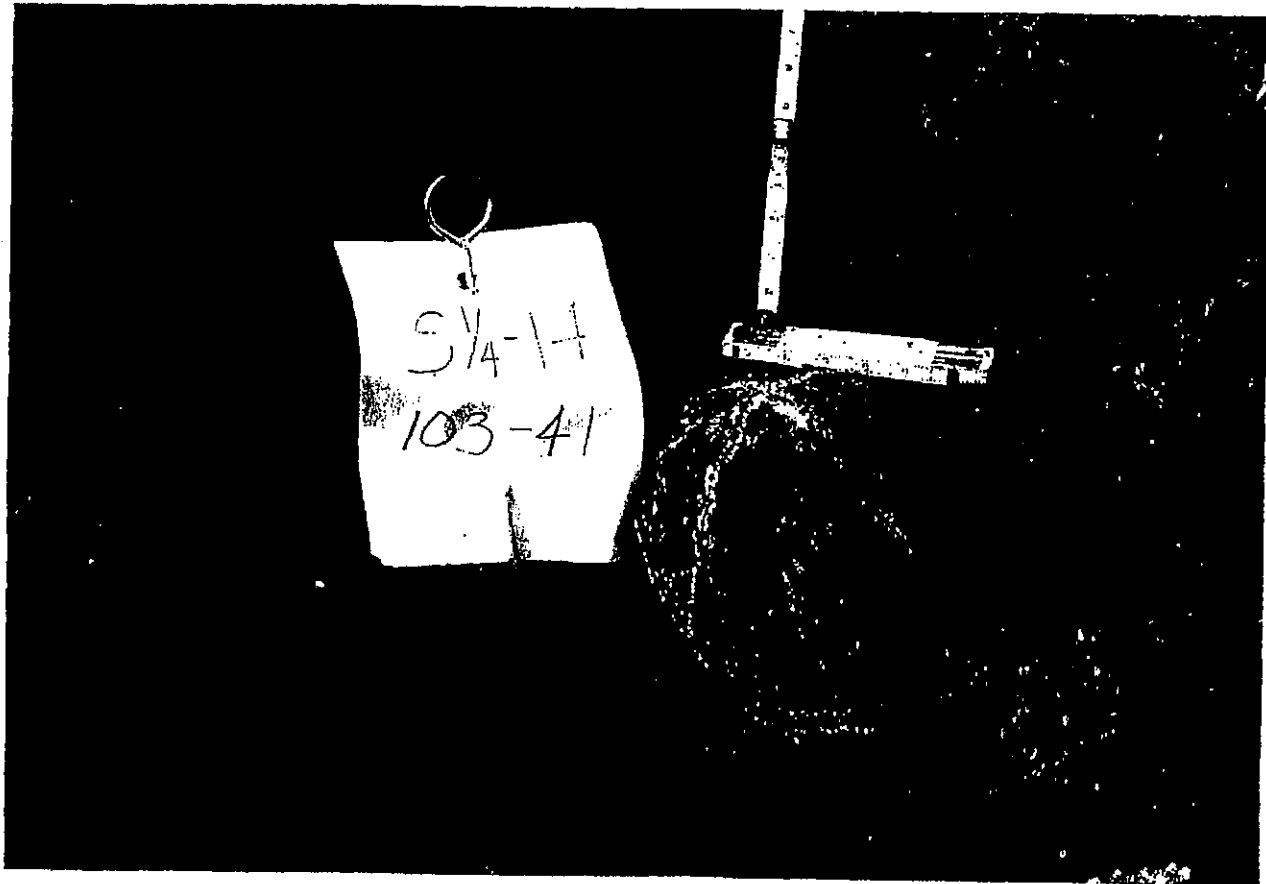
County Recorder \_\_\_\_\_  
 By \_\_\_\_\_, Deputy  
 DOCUMENT NO. \_\_\_\_\_

Statement of Evidence

1868 Original Township Subdivision was surveyed by Jewett H. Howe.

1900 Nobles Co. Hwy. Dept. records indicate a stone was found.

2005 Gerald Vickerman PLS and Jeremy Lund, with Zieske Land Surveying, excavated with a backhoe and found a 16" pointed stone on centerline of road east & west, 2' west of fence south and in line with fence north. Crew placed 1" iron pipe with red survey cap 43803 over top of stone.



DOCUMENT NUMBER A 306931

Certified, Filed and or Recorded on  
NOV. 10, 2005 AT 11:15:00AM

*Lynn M. Wilson* <sup>00</sup>

TRACKED \_\_\_\_\_  
PHOTO SS  
FEE \_\_\_\_\_

COMPARED \_\_\_\_\_

NOBLES COUNTY RECORDER  
LYNN M. WILSON  
507-372-8216