

CERTIFICATE OF LOCATION OF GOVERNMENT CORNER

SOUTHEAST Corner of Section 6, Township 103, Range 41, 5TH P.M.

STATE OF MINNESOTA, County of NOBLES

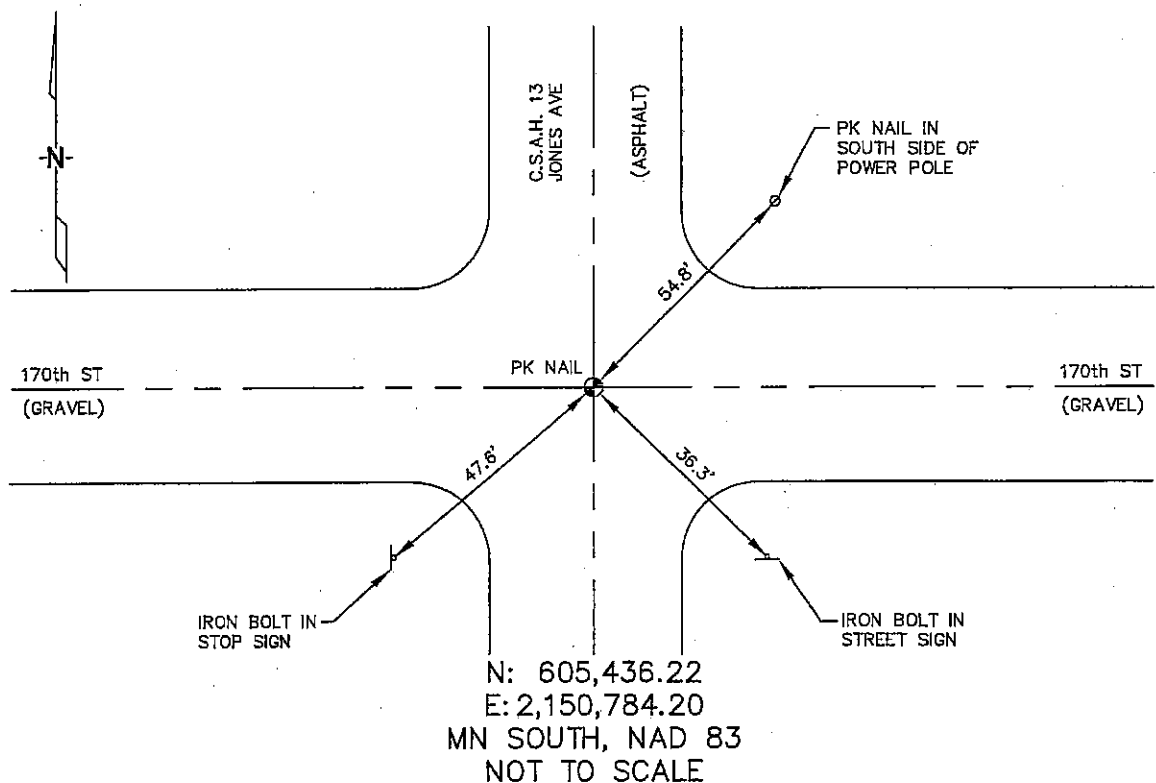
At the corner location shown on the sketch :

☒ On 2/23/2006 found A PK NAIL IN ASPHALT AT INTERSECTION.

☒ left monument as found, ☐ lowered monument, ☐ removed monument (explain)

☐ On _____ set _____

Sketch of reference ties



Statement of evidence relative to this corner location is on back page

I hereby certify that this document and the data contained herein was prepared by me or under my direct supervision.

Thomas P. Jeff 5/10/06
Thomas P. Jeff Date
Registration No. 44563

☒ Land Surveyor, ☐ Professional Engineer

☐ County Surveyor, ☐ County Engineer

OFFICE OF THE COUNTY RECORDER

County of _____

I hereby certify that this document was filed in the Co. Records office at _____ M. on the _____ day of _____ A.D. , 20

County Recorder _____

By _____, Deputy

DOCUMENT NO. _____

STATEMENT OF EVIDENCE:

SOUTHEAST CORNER, SECTION 6, T. 103 N., R. 41 W.,
NOBLES COUNTY, MINNESOTA

1868 Jewett & Howe, US. Deputy Surveyors, monumented corner.

2/23/2006 Uiteig Engineers, Inc., Survey Crew, Dennis Lavallie Party Chief,
found a PK nail in the asphalt pavement at the intersection.
Ties: NE-54.8' to PK nail on south face of wood, power pole;
SE-36.3' to iron bolt in "Street Sign" post;
SW-47.6' to iron bolt in "Stop Sign" post.