

# CERTIFICATE OF LOCATION OF GOVERNMENT CORNER

SOUTHWEST Corner of Section 6, Township 103, Range 41, 5TH P.M.

STATE OF MINNESOTA, County of NOBLES

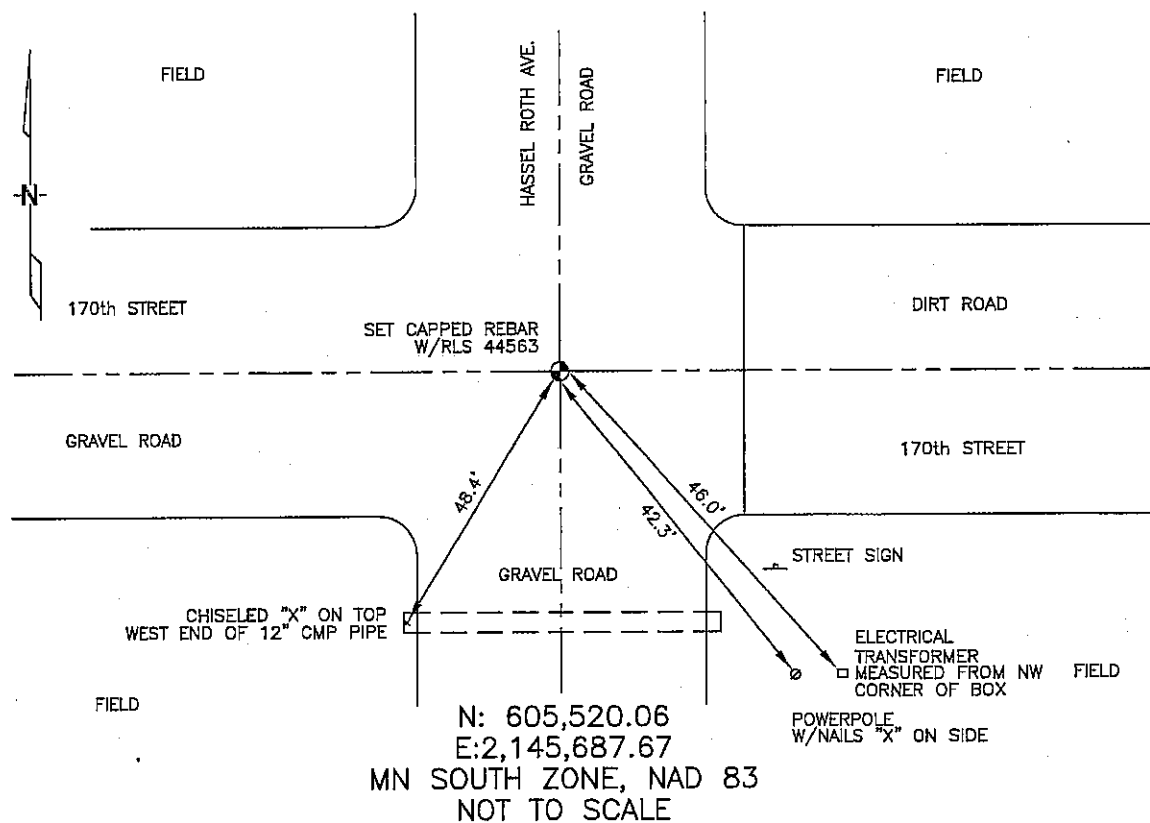
At the corner location shown on the sketch :

☐ On \_\_\_\_\_ found \_\_\_\_\_

☐ left monument as found, ☐ lowered monument, ☐ removed monument (explain)

☒ On 3/8/2006 set 5/8" REBAR WITH CAP: RLS 44563.

Sketch of reference ties



Statement of evidence relative to this corner location is on back page

I hereby certify that this document and the data contained herein was prepared by me or under my direct supervision.

*Thomas V. Zeff*  
Thomas V. Zeff

4/18/06  
Date

Registration No. 44563

☒ Land Surveyor, ☐ Professional Engineer

☐ County Surveyor, ☐ County Engineer

## OFFICE OF THE COUNTY RECORDER

County of \_\_\_\_\_

I hereby certify that this document was filed in the Co. Recorders office at \_\_\_\_\_ .M. on the day of \_\_\_\_\_ A.D. , 20

County Recorder \_\_\_\_\_

By \_\_\_\_\_ , Deputy

DOCUMENT NO. \_\_\_\_\_

STATEMENT OF EVIDENCE:

SOUTHWEST CORNER, SECTION 6, T. 103 N., R. 41 W.,  
NOBLES COUNTY, MINNESOTA

- 1867 T.B. Walker, US. Deputy Surveyor, monumented west range line.
- 1901 Nobles Co., set stone on corner; no ties.
- 1916 Nobles Co., found stone; no ties.
- 1936 Nobles Co., found stone, no ties.
- 3/8/2006 Ulteig Engineers, Inc., Survey Crew, Brian Payne Party Chief, found nothing. Set a 5/8" rebar with cap: RLS 44563 at intersection.  
Ties: SW-48.4' to chiseled "X" on top, west end, 12" CMP.;  
SE-46.0' to NE corner of electrical transformer box;  
SE-42.3' to nailed "X" on power pole;  
N-2641.65' to W 1/4 corner, Section 6;  
E-2480.00' to S 1/4 corner, Section 6;  
W-2625.85' to S 1/4 corner, Section 1, Range 42 West.