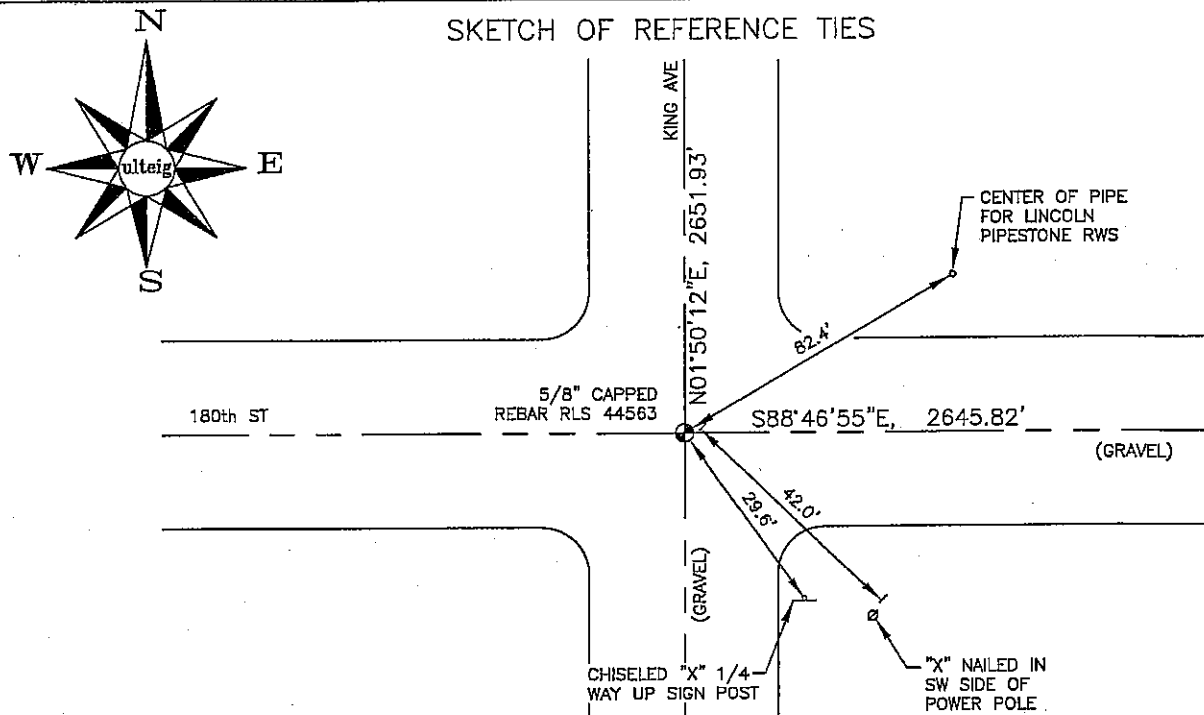


CERTIFICATE OF LOCATION OF GOVERNMENT CORNER

SOUTHWEST Corner of Section 9, Township 103N, Range 41W, 5th P.M.
STATE OF MINNESOTA, County of NOBLES

At the corner location shown on the sketch:

- ☐ On _____ found a _____
DATE
- ☐ left monument as found, ☐ lowered monument, ☐ removed monument (explain)
☒ On 02/27/2006 placed a 5/8" REBAR WITH CAP: RLS 44563
DATE



N: 600,068.79

E: 2,155,990.08

MN SOUTH, NAD 83

NOT TO SCALE

BEARING SYSTEM IS BASED ON MN STATE PLANE COORDINATE SYSTEM, SOUTH ZONE, 1983 N. AMERICAN DATUM.

Statement of evidence relative to this corner location is on back of page.

I hereby certify that this document and the data contained herein was prepared by me or under my direct supervision.

Thomas V. Zeff
Thomas V. Zeff

5/1/06
DATE

Registration No. 44563

- ☒ Land Surveyor, ☐ Professional Engineer
☐ County Surveyor, ☐ County Engineer

OFFICE OF THE COUNTY RECORDER

County of _____

I hereby certify that this document was filed in the Co. Recorders office at _____ M. on the _____ day of _____ A.D., 20____

County Recorder _____

By _____, Deputy

DOCUMENT NO. _____

STATEMENT OF EVIDENCE:

SOUTHWEST CORNER, SECTION 9, T.103N., R.41W.,
NOBLES COUNTY, MINNESOTA

1868

Jewett & Howe, U.S. Deputy Surveyors.
North between Sections 16 & 17 at 80 chains.

02/27/2006:

Ulteig Engineering, Inc., Survey Crew, Brian Payne,
Party Chief, set a 5/8" rebar with cap: RLS 44563,
in a gravel road.

Ties: NE-82.4' to center of pipe for Lincoln
Pipestone RWS.,

SE-42.0' to "X" nailed on SW side of power
pole.

SE-29.6' to chiseled "X" 1/4 the distance up
on sign post.

N-2651.93' to W 1/4 corner, Section 9,

E-2645.82' to S 1/4 corner, Section 9.