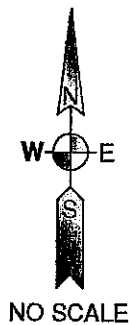


CERTIFICATE OF LOCATION OF GOVERNMENT CORNER

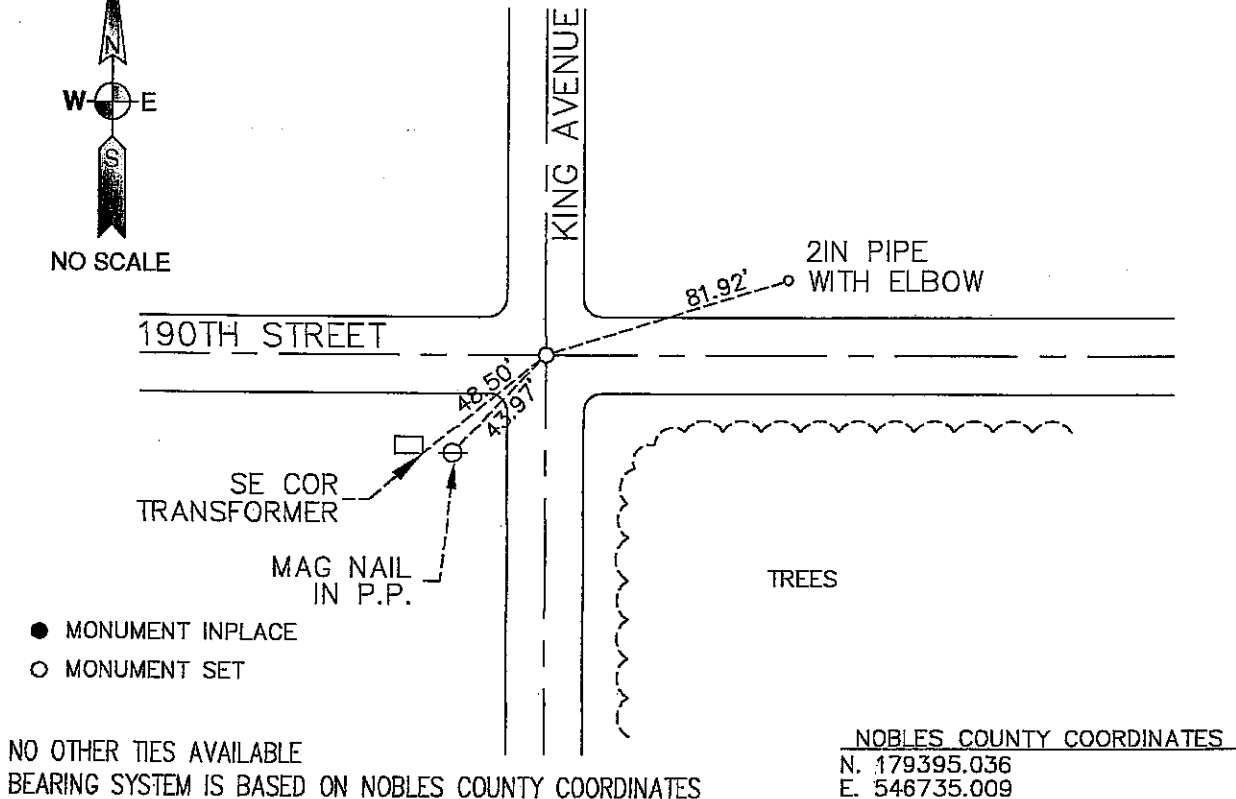
SOUTHWEST Corner of Section 16, Township 103, Range 41, 5th P.M.
STATE OF MINNESOTA, County of NOBLES

At the corner location shown on the sketch:

- ☐ On _____ found a _____
DATE
- ☐ left monument as found, ☐ lowered monument, ☐ removed monument (explain)
☒ On 3/4/2008 placed a 5/8" REBAR WITH RLS "40827" CAP 0.3' BELOW
DATE
- GRAVEL ROAD SURFACE



SKETCH OF REFERENCE TIES



Statement of evidence relative to this corner location is on back of page.

I hereby certify that this document and the data contained herein was prepared by me or under my direct supervision.

[Signature]
SURVEYOR'S NAME
Registration No. 40827

3-17-08
DATE

- ☒ Land Surveyor, ☐ Professional Engineer
☐ County Surveyor, ☐ County Engineer

OFFICE OF THE COUNTY RECORDER

County of _____
I hereby certify that this document was filed in
the Co. Recorders office at _____ M. on the
_____ day of _____ A.D., 20____

County Recorder _____

By _____, Deputy

DOCUMENT NO. _____

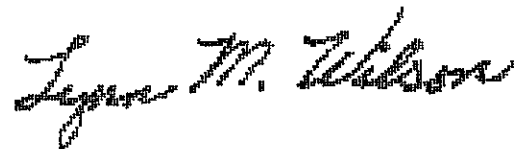
STATEMENT OF EVIDENCE:

SOUTHWEST CORNER, SECTION 16, T. 103 N., R. 41 W.,
NOBLES COUNTY, MINNESOTA

- 1868 Jewett & Howe, U.S. Deputy Surveyors, monumented corner.
- 2008 Ulteig Engineers, Inc., Survey Crew, Bob Kohler Party Chief, placed an 18" x 5/8" rebar with orange Ulteig "40827" cap down 0.3'.
Ties: NE-81.92' to a 2" pipe with elbow;
SW-43.97' to a mag-nail in power pole;
SW-48.50' to the southeast corner of an electric transformer.

DOCUMENT NUMBER A 318068

Certified, Filed and or Recorded on
Mar. 25, 2008 AT 02:09PM



NOBLES COUNTY RECORDER
LYNN M. WILSON
507-372-8216