

CERTIFICATE OF LOCATION OF GOVERNMENT CORNER

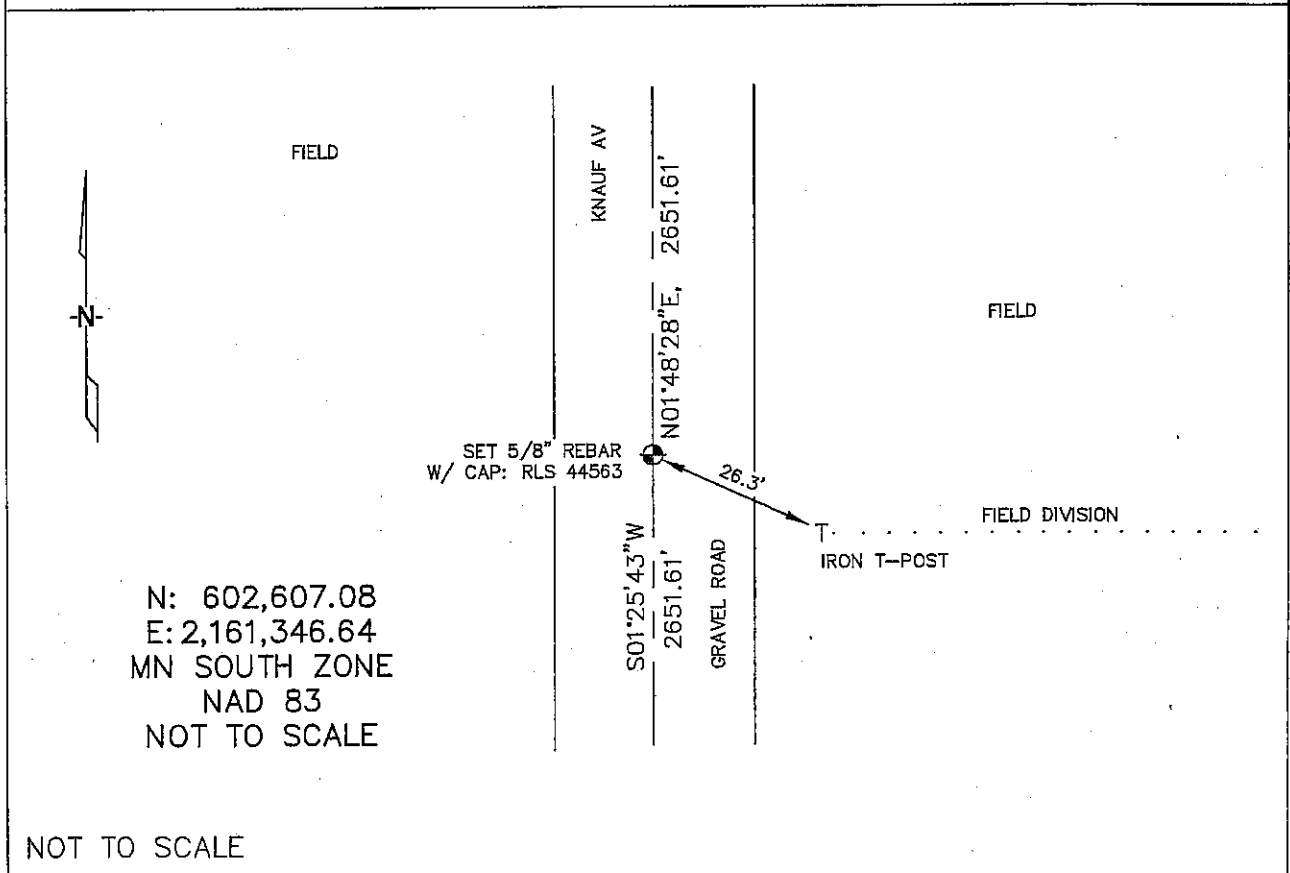
WEST 1/4 Corner of Section 10 Township 103N Range 41W 5th P.M.

STATE OF MINNESOTA, County of NOBLES

At the corner location shown on the sketch :

- ☐ On _____ found _____
- ☐ left monument as found, ☐ lowered monument, ☐ removed monument (explain)
- ☒ On 2/22/2006 set 5/8" REBAR WITH CAP: RLS 44563, IN GRAVEL ROAD.

Sketch of reference ties



Statement of evidence relative to this corner location is on back page

I hereby certify that this document and the data contained herein was prepared by me or under my direct supervision.

Thomas V. Zeff 5/10/06
Thomas V. Zeff Date
Registration No. 44563

- ☒ Land Surveyor, ☐ Professional Engineer
☐ County Surveyor, ☐ County Engineer

OFFICE OF THE COUNTY RECORDER

County of _____

I hereby certify that this document was filed in the Co. Recorders office at _____ M. on the day of _____ A.D. , 20

County Recorder _____
By _____, Deputy

DOCUMENT NO. _____

STATEMENT OF EVIDENCE:

WEST 1/4 CORNER, SECTION 10, T. 103 N., R. 41 W.,
NOBLES COUNTY, MINNESOTA

- 1868 Jewett & Howe, US. Deputy Surveyors, monumented section.
- 1900 Nobles Co. Highway Dept. found a stake, no ties.
- 2/22/2006 Ulteig Engineers, Inc., Survey Crew, Dennis Lavallie Party Chief, found nothing. Set a 5/8" rebar with cap: RLS 44563 in gravel road.
Ties: SE-26.3' to an iron t-post;
N-2651.61' to NW corner, Section 10;
S-2651.61' to SW corner, Section 10.