

CERTIFICATE OF LOCATION OF GOVERNMENT CORNER

WEST 1/4 Corner of Section 15, Township 103N, Range 41W, 5th P.M.

STATE OF MINNESOTA, County of NOBLES

At the corner location shown on the sketch :

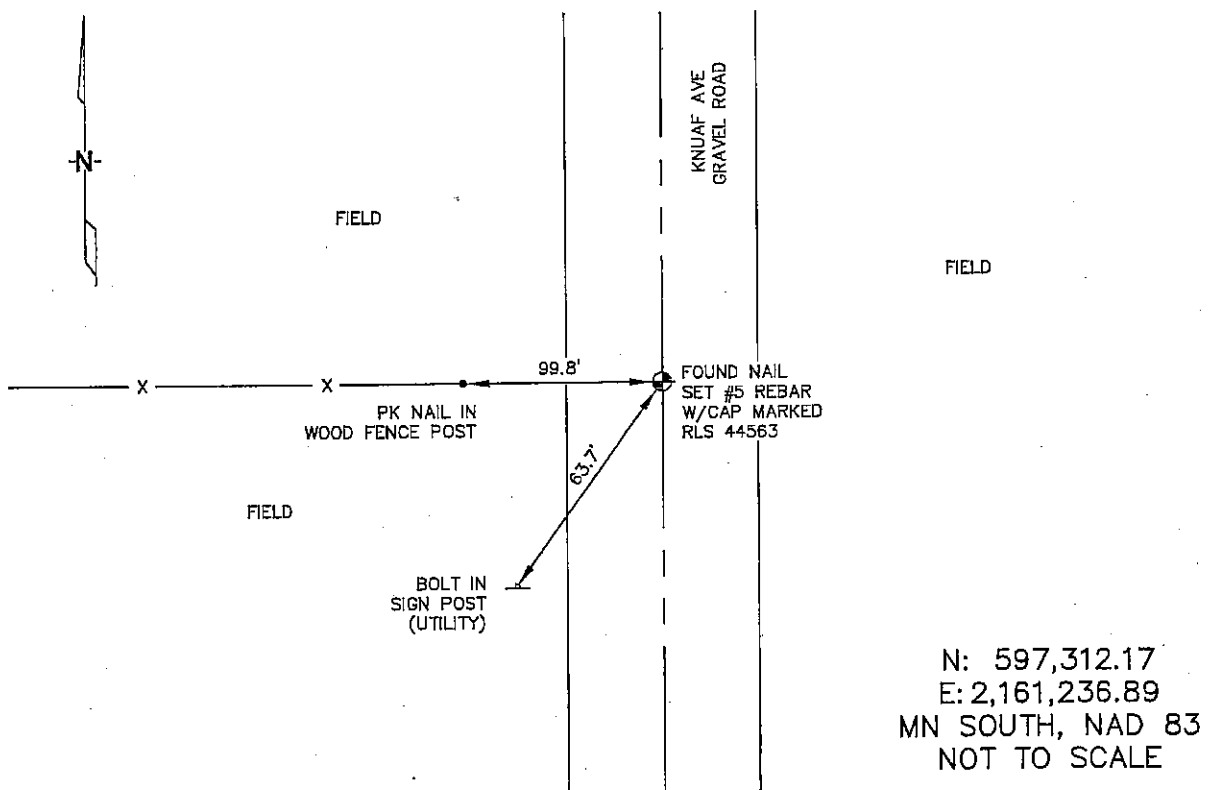
☒ On 2/22/2006 found NAIL IN GRAVEL ROAD, OPPOSITE FENCE LINE

RUNNING WEST.

☐ left monument as found, ☐ lowered monument, ☒ removed monument (explain)

☒ On 2/22/2006 set A 5/8" REBAR WITH CAP: RLS 44563.

Sketch of reference ties



Statement of evidence relative to this corner location is on back page

I hereby certify that this document and the data contained herein was prepared by me or under my direct supervision.

Thomas J. Zell 5/10/06
Signature Date
Registration No. 44563

☒ Land Surveyor, ☐ Professional Engineer
☐ County Surveyor, ☐ County Engineer

OFFICE OF THE COUNTY RECORDER

County of _____

I hereby certify that this document was filed in the Co. Records office at _____ M. on the _____ day of _____ A.D. , 20____

County Recorder _____
By _____, Deputy

DOCUMENT NO. _____

STATEMENT OF EVIDENCE:

WEST 1/4 CORNER, SECTION 15, T. 103 N., R. 41 W.,
NOBLES COUNTY, MINNESOTA

- 1868 Jewett & Howe, US. Deputy Surveyors, monumented corner.
- 1912 Nobles Co. Highway Dept. set a stone on corner, no ties.
- 2/22/2006 Ulteig Engineers, Inc. Survey Crew, Dennis Lavallie Party Chief, found a nail in the gravel. Set a 5/8" rebar with cap: RLS 44563 in road, opposite fence line running west.
Ties: W-99.8' to PK Nail in wood, fence post;
SW-63.7' to bolt in iron, utility sign post.