

CERTIFICATE OF LOCATION OF GOVERNMENT CORNER

WEST 1/4 Corner of Section 6, Township 103N, Range 41W 5TH P.M.

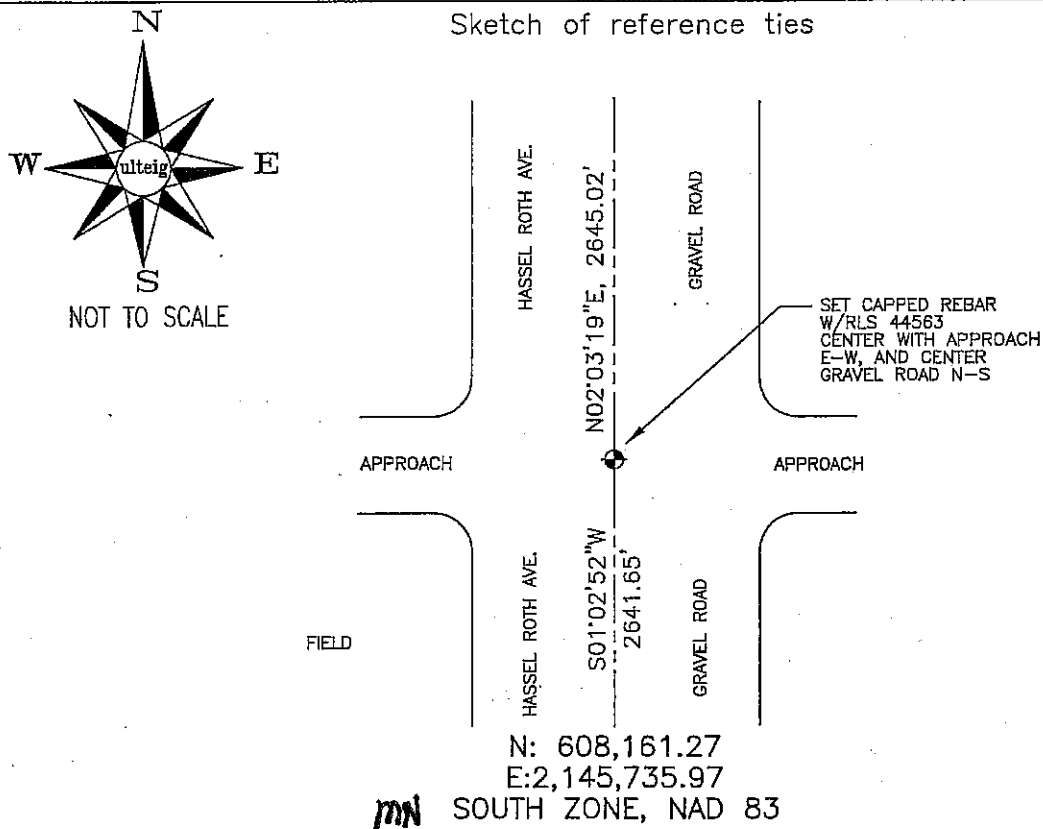
STATE OF MINNESOTA, County of NOBLES

At the corner location shown on the sketch :

☐ On _____ found _____

☐ left monument as found, ☐ lowered monument, ☐ removed monument (explain)

☒ On 3/08/2006 set 5/8" REBAR WITH CAP: RLS 44563.



Statement of evidence relative to this corner location is on back page

I hereby certify that this document and the data contained herein was prepared by me or under my direct supervision.

Thomas V. Zett 5/1/06
Thomas V. Zett Date
Registration No. 44563

☒ Land Surveyor, ☐ Professional Engineer

☐ County Surveyor, ☐ County Engineer

OFFICE OF THE COUNTY RECORDER

County of _____

I hereby certify that this document was filed in the Co. Records office at _____ .M. on the day of _____ A.D. , 20

County Recorder _____

By _____, Deputy

DOCUMENT NO. _____

STATEMENT OF EVIDENCE:

WEST 1/4 CORNER, SECTION 6, T. 103 N., R. 41 W.,
NOBLES COUNTY, MINNESOTA

- 1867 T.B. Walker, US. Deputy Surveyor, monumented west range line.
- 1936 Murray Co., set a stone on corner, no ties.
- 3/08/2006 Ulteig Engineers, Inc., Survey Crew, Brian Payne Party Chief,
found nothing. Set a 5/8" rebar with cap: RLS 44563.
Ties: N-2645.02' to NW corner, Section 6;
S-2641.65' to SW corner, Section 6.