

CERTIFICATE OF LOCATION OF GOVERNMENT CORNER

WEST 1/4 Corner of Section 7, Township 103, Range 41, 5th P.M.

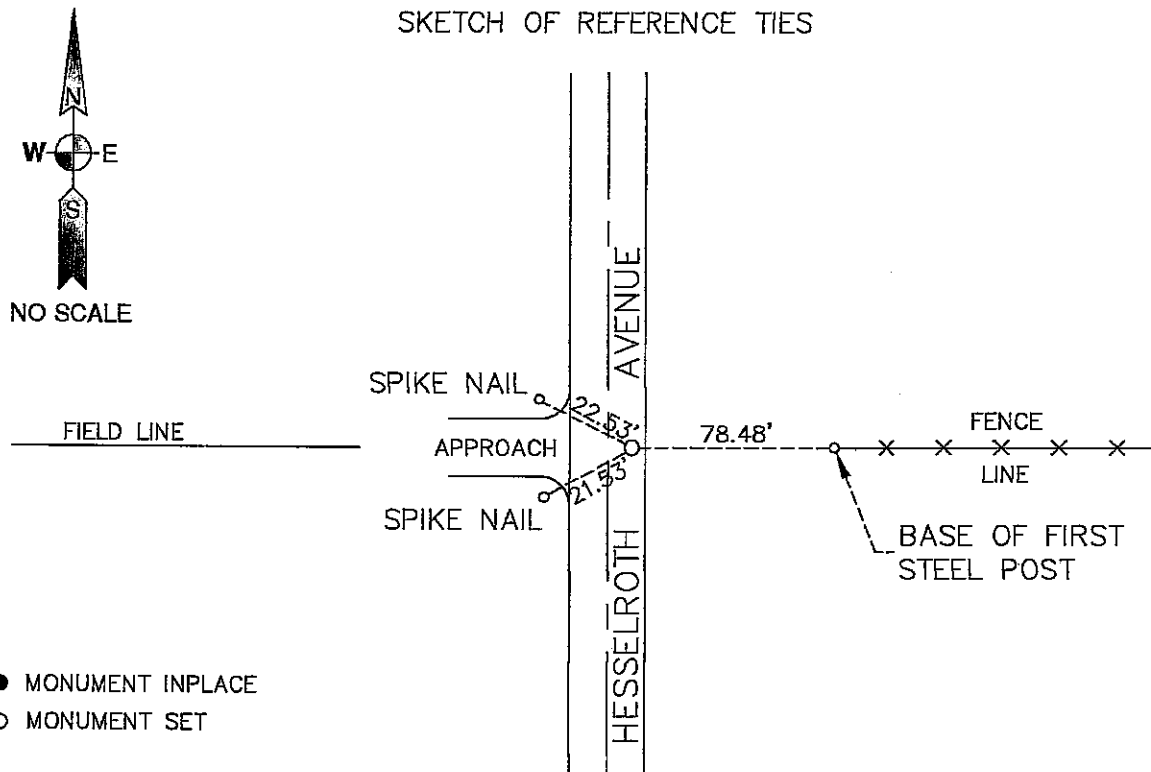
STATE OF MINNESOTA, County of NOBLES

At the corner location shown on the sketch:

☐ On _____ found a _____
DATE

☐ left monument as found, ☐ lowered monument, ☐ removed monument (explain)
☒ On 3/4/2008 placed a 5/8" REBAR WITH RLS "40827" CAP 0.3' BELOW
DATE

GRAVEL ROAD SURFACE



NO OTHER TIES AVAILABLE
BEARING SYSTEM IS BASED ON NOBLES COUNTY COORDINATES

NOBLES COUNTY COORDINATES
N. 187239.969
E. 536280.092

Statement of evidence relative to this corner location is on back of page.

I hereby certify that this document and the data contained herein was prepared by me or under my direct supervision.

[Signature] SURVEYOR'S NAME
DATE 3-17-08

Registration No. 40827

☒ Land Surveyor, ☐ Professional Engineer
☐ County Surveyor, ☐ County Engineer

OFFICE OF THE COUNTY RECORDER

County of _____

I hereby certify that this document was filed in the Co. Recorders office at _____ M. on the _____ day of _____ A.D., 20____

County Recorder _____

By _____, Deputy

DOCUMENT NO. _____

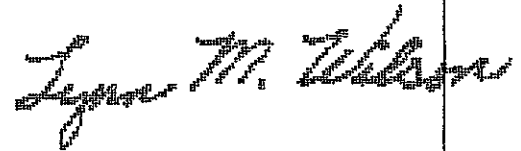
STATEMENT OF EVIDENCE:

WEST 1/4 CORNER, SECTION 7, T. 103 N., R. 41 W.,
NOBLES COUNTY, MINNESOTA

- 1867 Thomas B. Walker, U.S. Deputy Surveyor, monumented corner.
- 2008 Ulteig Engineers, Inc., Survey Crew, Bob Kohler Party Chief, placed an 18" x 5/8" rebar with orange Ulteig "40827" cap down 0.3'.
Ties: E-78.48' to the base of the first steel post along fence line;
SW-21.53' to a spike nail set in road shoulder;
NW-22.53' to a spike nail set in road shoulder.

DOCUMENT NUMBER A 318064

Certified, Filed and or Recorded on
Mar. 25, 2008 AT 02:05PM



NOBLES COUNTY RECORDER
LYNN M. WILSON
507-372-8216