

S1/4  
sec 4 103 42

### CERTIFICATE OF LOCATION OF GOVERNMENT CORNER

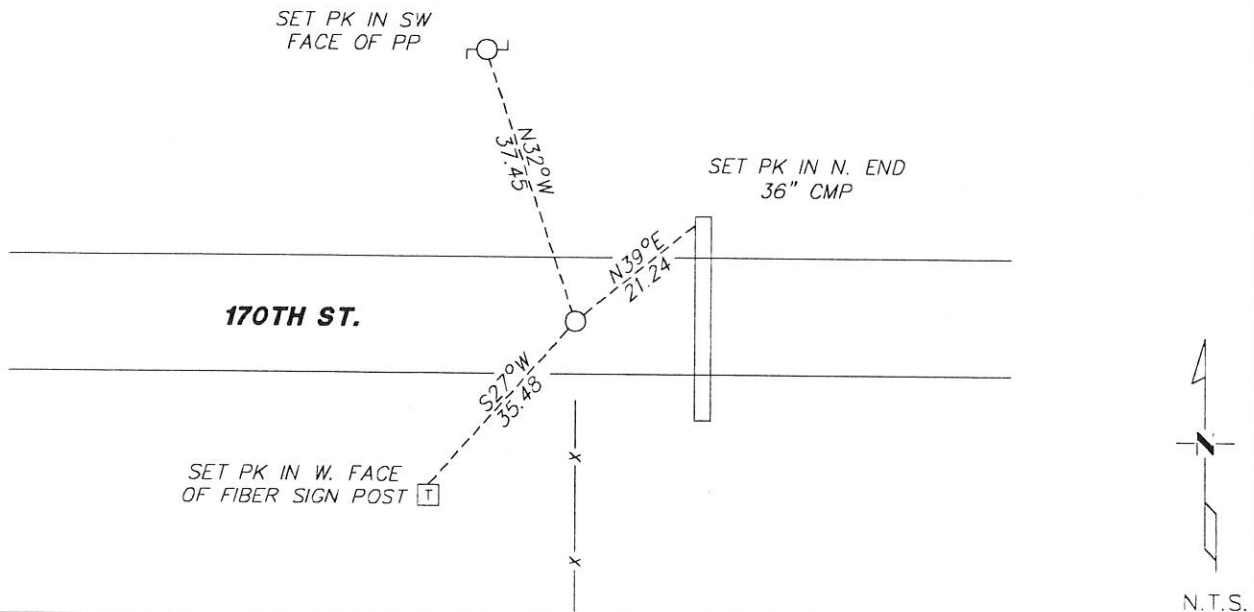
NORTH QUARTER Corner of Section 9, Township 103N, Range 42W

5th Principal Meridian, State of Minnesota, County of Nobles.

At the corner location shown on the sketch:

- On \_\_\_\_\_ found a \_\_\_\_\_
- left monument as found     lowered monument     removed monument (explain)
- On 12/28/17 placed a 1/2" REBAR CAPPED 49563 ON CENTERLINE AND A FENCE LINE TO  
DATE THE SOUTH

#### SKETCH OF REFERENCE TIES



Statement of evidence for this corner location is on back of this page.

I hereby certify that this document was researched and prepared by me or under my direct supervision and that I am a licensed Land Surveyor under the laws of the State of Minnesota.

Signature T. W. L.

Date 1/8/18 License No. 49563

Title:

- Land Surveyor     Professional Engineer
- County Surveyor     County Engineer

OFFICE OF THE COUNTY RECORDER

County of Nobles

I hereby certify that this document was filed in the Co.

Recorder's office at \_\_\_\_\_ M. on the \_\_\_\_\_ day of \_\_\_\_\_ A.D. 20 \_\_\_\_\_

County Recorder \_\_\_\_\_

by \_\_\_\_\_, Deputy

DOCUMENT NO. \_\_\_\_\_

KRIS WROOLIE  
Minnesota License No. 49563

**Statement of Evidence:**

E-11

North Quarter Corner of Section 9, Township 103 North, Range 42 West, 5<sup>th</sup> Principal Meridian, Nobles County, Minnesota.

1869-Deputy Surveyor set a post in mound with pits.

1897- Nobles County Highway Department "Corner Ties Book" calls for a stone to mark the corner location.

2017- Westwood Professional Services located an east/west centerline occupation line north and an old fence line lying down to the south. The occupation closely agrees with the proportionate position. Accepting the occupation as the best available evidence of the corner. A ½" rebar capped 49563 was placed for the corner. Ties were found or set as shown on the front of this certificate

Analysis of the recovered data, field evidence and survey measurements, indicates that the monument found is the correct perpetuation of this corner. For additional information concerning this corner please contact Westwood Professional Services.

DOCUMENT NUMBER A 357394  
Certified, Filed and or Recorded on  
February 28, 2018 12:53 PM

*Lynn Wilson* RW

NOBLES COUNTY RECORDER  
LYNN M. WILSON  
507-295-5268

Pages: 2