

SW
SEC 6
103 42

COPY

Index E-25

CERTIFICATE OF LOCATION OF GOVERNMENT CORNER

NORTHEAST Corner of Section 12, Township 103N, Range 43W

5th Principal Meridian, State of Minnesota, County of Nobles.

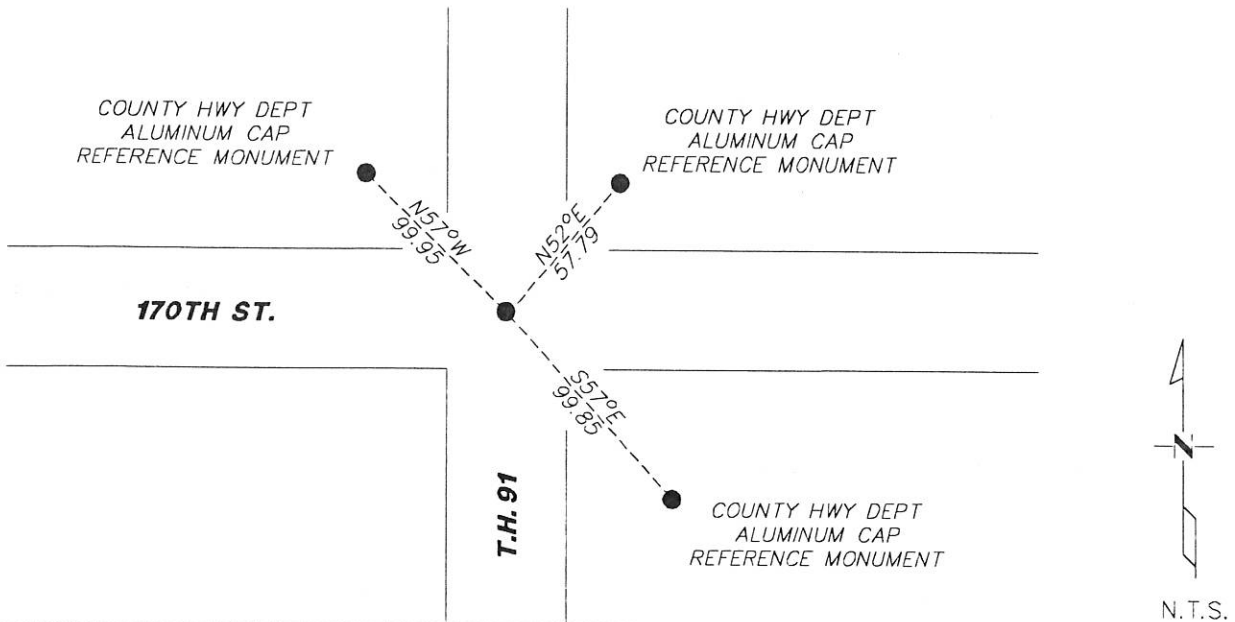
At the corner location shown on the sketch:

On 12/01/17 found a 3/8" REBAR AT THE CENTERLINE INTERSECTION
DATE

left monument as found lowered monument removed monument (explain)

On _____ placed a _____
DATE

SKETCH OF REFERENCE TIES



Statement of evidence for this corner location is on back of this page.

I hereby certify that this document was researched and prepared by me or under my direct supervision and that I am a licensed Land Surveyor under the laws of the State of Minnesota.

Signature K.W.W.

Date 1/8/18 License No. 49563

Title:

- Land Surveyor Professional Engineer
- County Surveyor County Engineer

DOCUMENT NUMBER A 357425
Certified, Filed and or Recorded on
March 01, 2018 9:50 AM

Lynn M. Wilson RS

NOBLES COUNTY RECORDER
LYNN M. WILSON
507-293-5256

Statement of Evidence:

E-25

Northeast Corner of Section 12, Township 103 North, Range 43 West, 5th Principal Meridian, Nobles County, Minnesota.

1869-Deputy Surveyor set a post in mound with pits.

1892- Nobles County Highway Department "Corner Ties Book" calls for a stone set to mark the corner location.

1917- Nobles County Highway Department "Corner Ties Book" calls for a stone to mark the corner location.

1965- Nobles County Highway Department "Corner Ties Book" calls for a brass plug to mark the corner location.

2002 - Zieske Land Surveying showed an iron monument in place

2006 - Ulteig Engineers found a 5/8" rebar at the centerline intersection, set ties, and filed a Certificate of Location doc. no. 318108

2017- Westwood Professional Services recovered 5/8" rebar at the centerline intersection. Ties were found or set as shown on the front of this certificate

Analysis of the recovered data, field evidence and survey measurements, indicates that the monument found is the correct perpetuation of this corner. For additional information concerning this corner please contact Westwood Professional Services.