

W 1/4
Sec 1
103
42

COPY

Index C-21

CERTIFICATE OF LOCATION OF GOVERNMENT CORNER

EAST QUARTER _____ Corner of Section 2, Township 103N, Range 42W

5th Principal Meridian, State of Minnesota, County of Nobles.

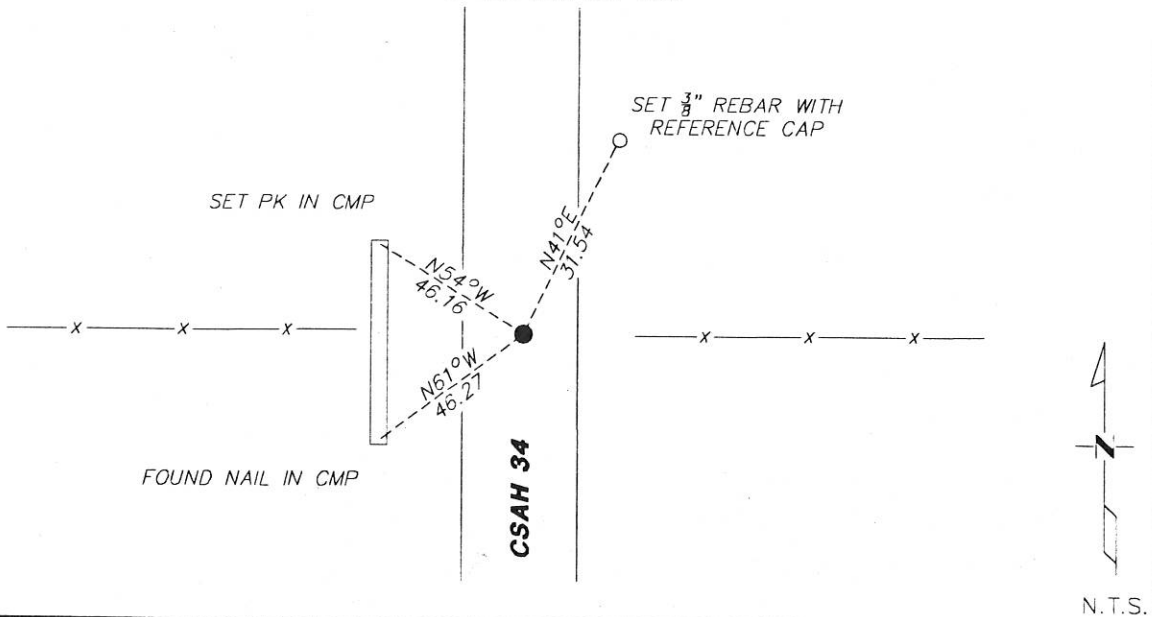
At the corner location shown on the sketch:

On 12/5/17 found a 3/8" REBAR ON CENTERLINE AND FENCES EAST AND WEST
DATE

left monument as found lowered monument removed monument (explain)

On _____ placed a _____
DATE

SKETCH OF REFERENCE TIES



Statement of evidence for this corner location is on back of this page.

I hereby certify that this document was researched and prepared by me or under my direct supervision and that I am a licensed Land Surveyor under the laws of the State of Minnesota.

Signature [Handwritten Signature]

Date 1/8/18 License No. 49563

Title:

- Land Surveyor Professional Engineer
- County Surveyor County Engineer

DOCUMENT NUMBER A 357380
Certified, Filed and or Recorded on
February 28, 2018 11:40 AM

[Handwritten Signature]

NOBLES COUNTY RECORDER
LYNN M. WILSON
507-295-5266

Pages: 2

Statement of Evidence:

C-21

East Quarter Corner of Section 2, Township 103 North, Range 42 West, 5th Principal Meridian, Nobles County, Minnesota.

1869-Deputy Surveyor set a post in mound with pits.

1900- Nobles County Highway Department "Corner Ties Book" calls for a stone to mark the corner location.

1929- Nobles County Highway Department "Corner Ties Book" calls for a stone to mark the corner location.

1936- Nobles County Highway Department "Corner Ties Book" calls for a stone to mark the corner location.

1961- Nobles County Highway Department "Corner Ties Book" calls for an iron pin to mark the corner location.

1998- Nobles County Highway Department "Corner Ties Book" calls for an iron 5/8" rebar to mark the corner location.

2006 - Ulteig Engineers found a 5/8" rebar at the road centerline intersection, set ties, and filed a Certificate of Location doc. no. 311283

2017- Westwood Professional Services recovered a 5/8" rebar at the road centerline and fences east and west, and one tie from the 2006 Certificate. Ties were found or set as shown on the front of this certificate

Analysis of the recovered data, field evidence and survey measurements, indicates that the monument found is the correct perpetuation of this corner. For additional information concerning this corner please contact Westwood Professional Services.


8/18/17