

W/4  
Sec 6  
103 42

Index C-25

### CERTIFICATE OF LOCATION OF GOVERNMENT CORNER

EAST QUARTER \_\_\_\_\_ Corner of Section 1, Township 103N, Range 43W

5th Principal Meridian, State of Minnesota, County of Nobles.

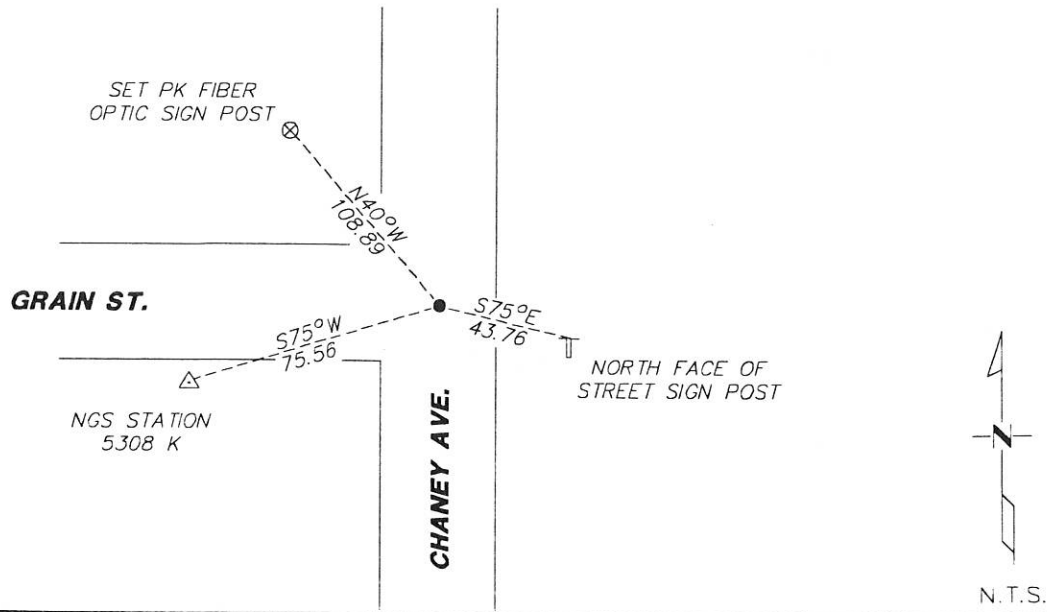
At the corner location shown on the sketch:

On 12/28/17 found a 5/8" REBAR AT THE CENTERLINE INTERSECTION  
DATE

left monument as found     lowered monument     removed monument (explain)

On \_\_\_\_\_ placed a \_\_\_\_\_  
DATE

#### SKETCH OF REFERENCE TIES



Statement of evidence for this corner location is on back of this page.

I hereby certify that this document was researched and prepared by me or under my direct supervision and that I am a licensed Land Surveyor under the laws of the State of Minnesota.

Signature TSW

Date 1/8/18 License No. 49563

Title:

- Land Surveyor     Professional Engineer
- County Surveyor     County Engineer

DOCUMENT NUMBER A 357420

Certified, filed and recorded

March 01, 2018 9:10 AM

*Lynne Wilson*

NOBLES COUNTY, MINN.  
Lynne Wilson  
Surveyor

**Statement of Evidence:**

C-25

East Quarter Corner of Section 1, Township 103 North, Range 43 West, 5<sup>th</sup> Principal Meridian, Nobles County, Minnesota.

1869-Deputy Surveyor set a post in mound with pits.

1892- Nobles County Highway Department "Corner Ties Book" calls for a stone set to mark the corner location.

1917- Nobles County Highway Department "Corner Ties Book" calls for a stone set to mark the corner location.

2002 - Zieske Land Surveying showed an iron monument in place

2008 - Ulteig Engineers found a PK nail at the centerline intersection, set ties, and filed a Certificate of Location doc. no. 318105

2017- Westwood Professional Services recovered 5/8" rebar at the centerline intersection and one tie from the 2008 Certificate. Ties were found or set as shown on the front of this certificate

Analysis of the recovered data, field evidence and survey measurements, indicates that the monument found is the correct perpetuation of this corner. For additional information concerning this corner please contact Westwood Professional Services.



Handwritten signature and date: 8/1/17