

CERTIFICATE OF LOCATION OF GOVERNMENT CORNER

NORTH 1/4 Corner of Section 2, Township 103, Range 42, 5TH P.M.

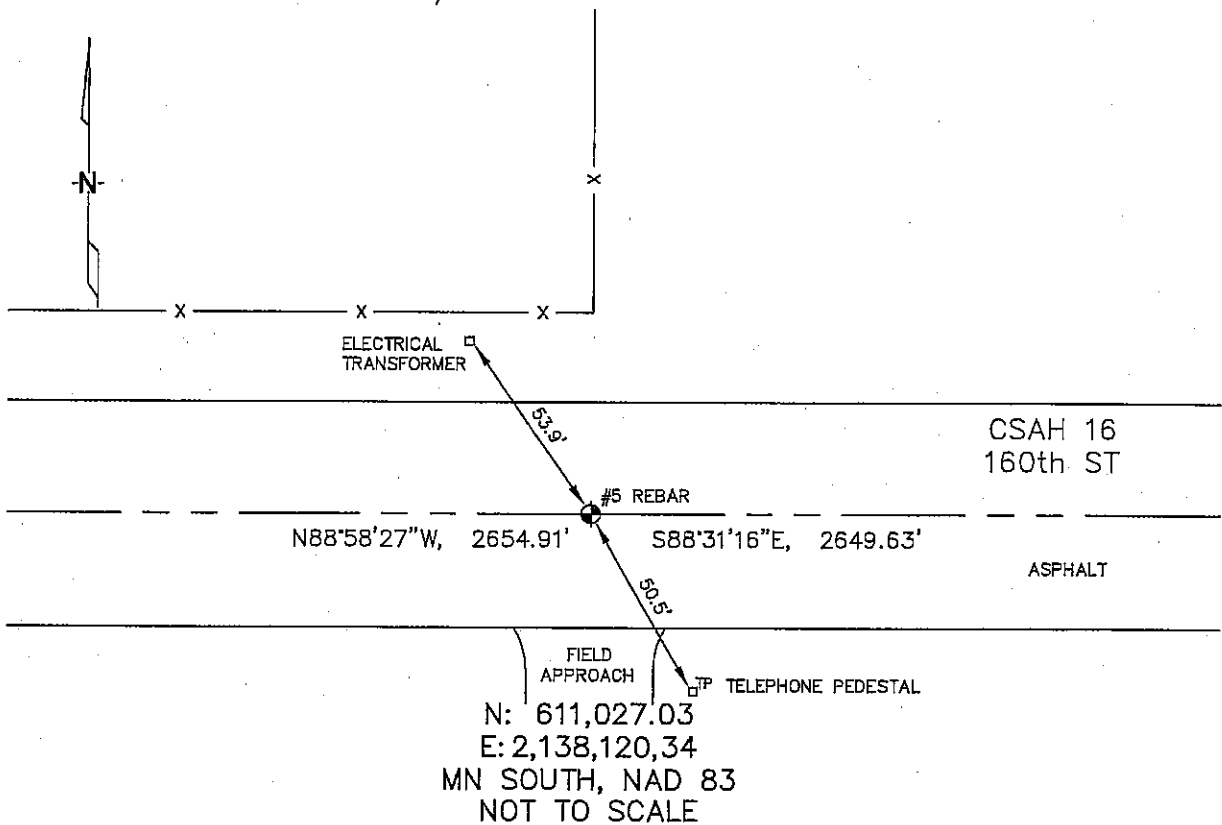
STATE OF MINNESOTA, County of NOBLES

At the corner location shown on the sketch :

On 2/27/2006 found A 5/8" REBAR IN THE C/L OF ASPHALT ROAD,
OPPOSITE A FENCE LINE RUNNING NORTH & WEST.
 left monument as found, lowered monument, removed monument (explain)

On _____ set _____

Sketch of reference ties



Statement of evidence relative to this corner location is on back page

I hereby certify that this document and the data contained herein was prepared by me or under my direct supervision.

Thomas V. Zell 7/05/06
 Signature Date

Registration No. 44563
 Land Surveyor, Professional Engineer
 County Surveyor, County Engineer

OFFICE OF THE COUNTY RECORDER

County of _____

I hereby certify that this document was filed in the Co. Recorders office at _____ .M. on the _____ day of _____ A.D. , 20

County Recorder _____
 By _____, Deputy

DOCUMENT NO. _____

STATEMENT OF EVIDENCE:

NORTH 1/4 CORNER, SECTION 2, T. 103 N., R. 42 W.,
NOBLES COUNTY, MINNESOTA

- 1867 Thomas B. Walker, US. Deputy Surveyor, monumented north township line.
- 1901 Nobles Co., found a stone at the corner; no ties.
- 1902 Nobles Co., found stone at corner, no ties.
- 1943 Nobles Co., found stone at corner, no ties.
- 2/27/2006 Ulteig Engineers, Inc., Survey Crew, Brian Payne Party Chief, found a 5/8" rebar in the C/L of the asphalt pavement, opposite a fence line running north & west.
Ties: NW-53.9' to SE corner of electrical transformer box;
SE-50.5' to top, center of telephone pedestal;
E-2649.63' to NE corner, Section 2;
W-2654.91' to NW corner, Section 2.