

298350

CERTIFICATE OF LOCATION OF GOVERNMENT CORNER

N1/4 Corner of Section 26, Township 103N, Range 42W, 5th P.M.

STATE OF MINNESOTA, County of NOBLES

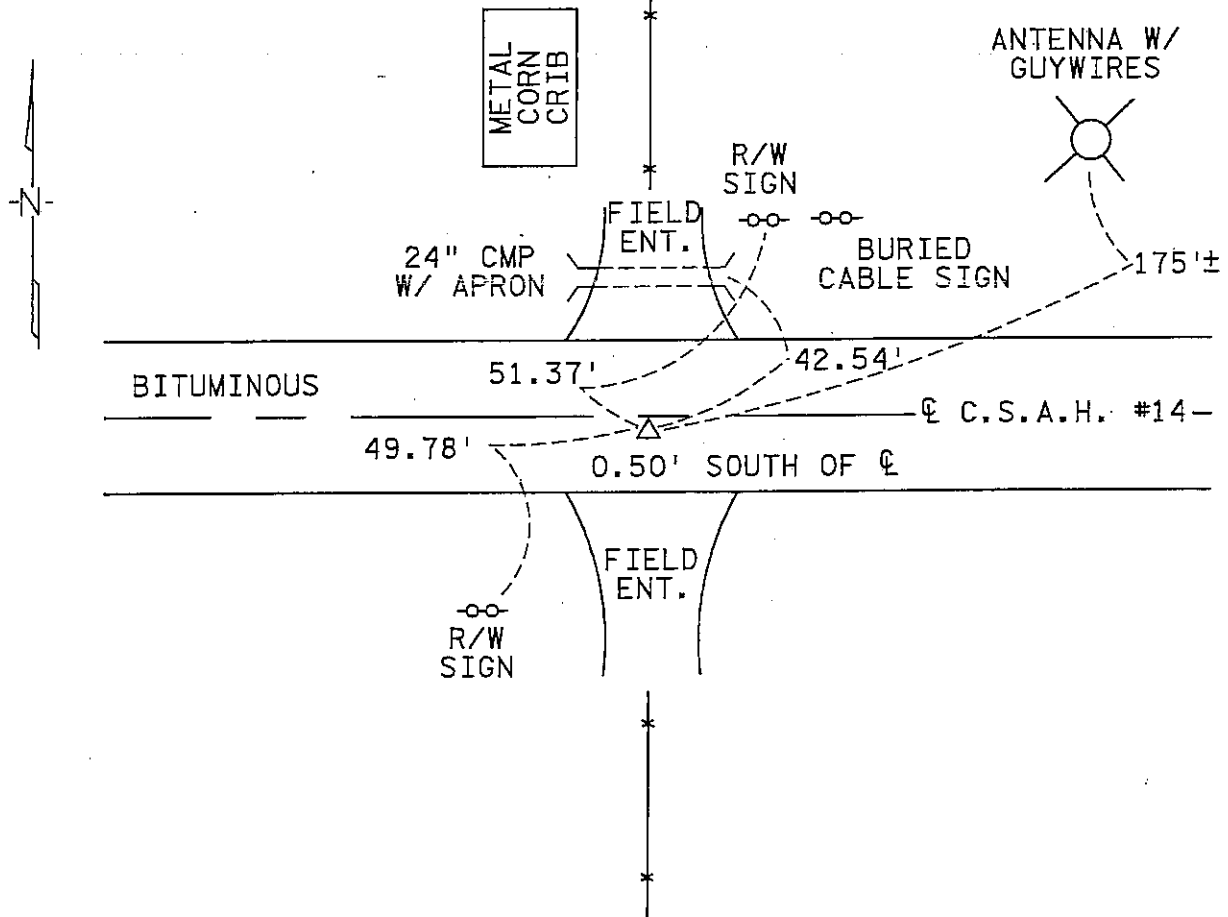
At the corner location shown on the sketch :

On 08-26-03 found 5/8" IRON PIN DOWN 1.10'

left monument as found, lowered monument, removed monument (explain)

On _____ set _____

Sketch of reference ties



Statement of evidence relative to this corner location is on back page

I hereby certify that this document and the data contained herein was prepared by me and under my direct supervision.

[Signature] 1/16/04
Signature Date
Registration No. 10062

Land surveyor, Professional Engineer

County Surveyor, County Engineer

OFFICE OF THE COUNTY RECORDER

County of Nobles

I hereby certify that this document was filed in the Co. Recorder office at 11:10 A.M. on the 23rd day of January A.D., 2004

County Recorder Lynn M. Wilson
By _____, Deputy

DOCUMENT NO. 298350

Jaggy Colby Associates

Statement of Evidence

NORTH QUARTER CORNER OF SECTION 26, TOWNSHIP 103 NORTH,
RANGE 42 WEST, 5TH P.M.

September 1868:

George B. Howe and Richard H. L. Jewett, Deputy Surveyors, set a post in mound with pit for corner during the Original Public Land Survey. The distance in the west half of the north line of Section 26 was 39.52 ½ chains (2608.65 feet).

August 1910:

Wm. A. Saxon, County Surveyor, performed a survey in the Northeast Quarter of Section 23. An iron pump handle was set at the center of section. According to his notes for establishing the center of section, he states "As no monument existed at the S.W. cor, measurement according to the government field notes was followed." And also, "The equi-distant points on each side of the section having been determined by measurement, I established the centre of the section at the intersection of the two straight lines run from each opposing points respectively." Although not clearly mentioned, Saxon visited and set a temporary monument at the North Quarter Corner of Section 26 to establish that center of section.

June 1972:

Nobles County Highway Surveyor placed 24" iron pin for corner.

August 2003:

Chad Nolte, Yaggy Colby Associates, found 5/8" iron pin under bituminous roadway. The distance from the Northeast Corner of Section 26 is 2622.13 feet.

An analysis of the record and survey data indicate the iron pin fits the occupation lines and proportionally fits the distances from the original government survey and the survey by Wm. A. Saxon, County Surveyor, in 1910 and is accepted as a perpetuation of the Public Land Survey corner.

TRACKED _____ COMPARED _____
PHOTO dy
FEE NIC #