

CERTIFICATE OF LOCATION OF GOVERNMENT CORNER

NORTH 1/4 Corner of Section 5, Township 103N, Range 42 W, 5th P.M.
 STATE OF MINNESOTA, County of NOBLES

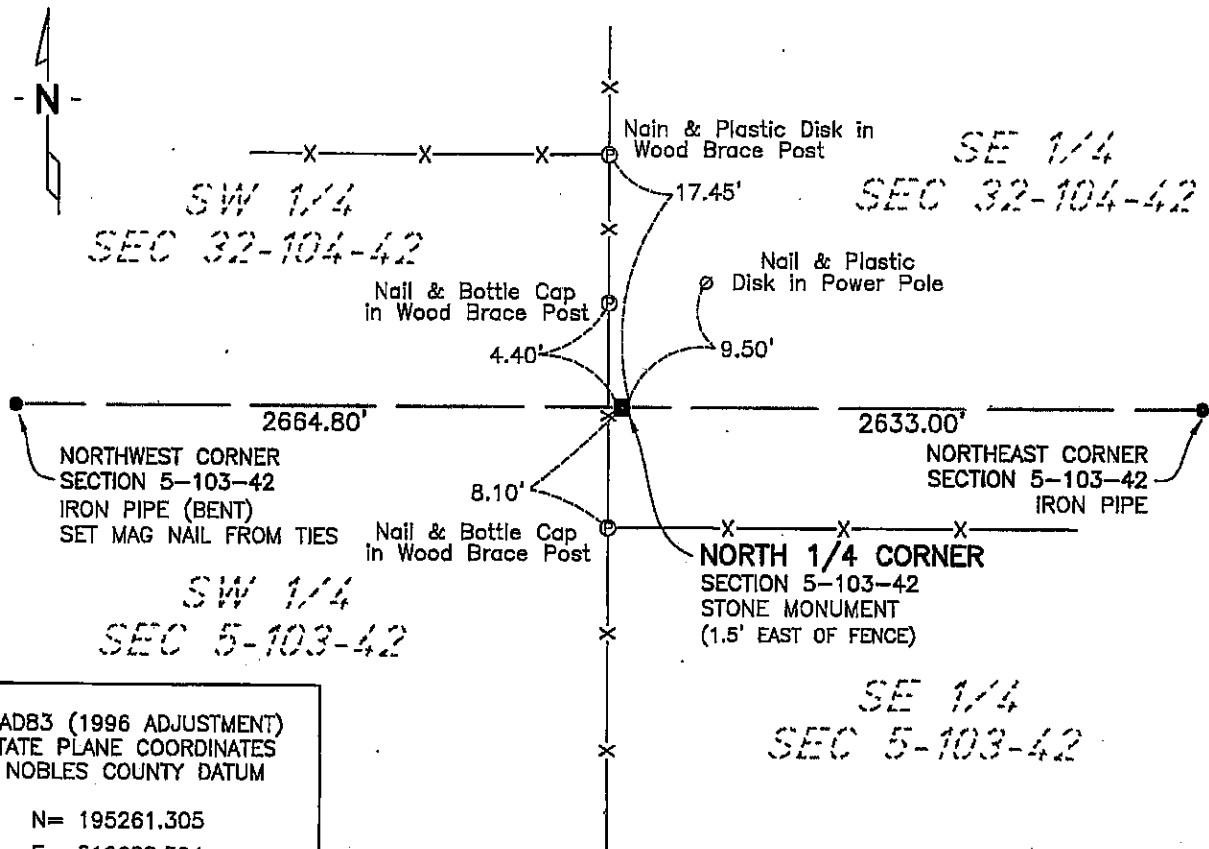
At the corner location shown on the sketch:

On 12/6/06 found a STONE MONUMENT & WOOD STAKE REMAINS
DATE

left monument as found, lowered monument, removed monument (explain)

On 12/6/06 placed a 5/8" REBAR ON NORTH SIDE OF STONE
DATE

SKETCH OF REFERENCE TIES



NAD83 (1996 ADJUSTMENT)
 STATE PLANE COORDINATES
 NOBLES COUNTY DATUM

N= 195261.305
 E= 512688.594

BOOK: 327 PG. 60
 I:\NOBL\certs\cad\NQC5-103-42.dwg

Statement of evidence relative to this corner location is on back of page.

I hereby certify that this document and the data contained herein was prepared by me or under my direct supervision.

Joseph A. Haefner
 Joseph A. Haefner 3-18-2008
DATE

Registration No. 43909

- Land surveyor, Professional Engineer
 County Surveyor, County Engineer

OFFICE OF THE COUNTY RECORDER

County of _____

I hereby certify that this document was filed in the Co. Recorders office at ____M. on the _____ day of _____ A.D., 19__

County Recorder _____

By _____, Deputy

DOCUMENT NO. _____

Statement of Evidence

North Quarter Corner Section 5, Township 103 North, Range 42 West

This corner was originally established during the Original Public Land Survey in 1867 by T.B Walker, US. Deputy Surveyor.

- 1922 -Nobles County Highway Department records show a stone monument, no ties.
- 1943 -Nobles County Highway Department records show a wooden stake, no ties.
- Dec. 2005 -Bolton & Menk, Inc., Survey crew located a stone monument and the remains of a wood stake and set a 5/8" iron rebar on the north side of the stone.

The written evidence appears to be conclusive back to the 1922 survey. The evidence does not tie the stone to the original monument; however, the stone is the best evidence of the true corner location. Additional information regarding the preparation of this certificate can be obtained by contacting: Bolton & Menk, Inc., Mankato, MN.