

CERTIFICATE OF LOCATION OF GOVERNMENT CORNER

NORTHEAST Corner of Section 2, Township 103, Range 42, 5TH P.M.

STATE OF MINNESOTA, County of NOBLES

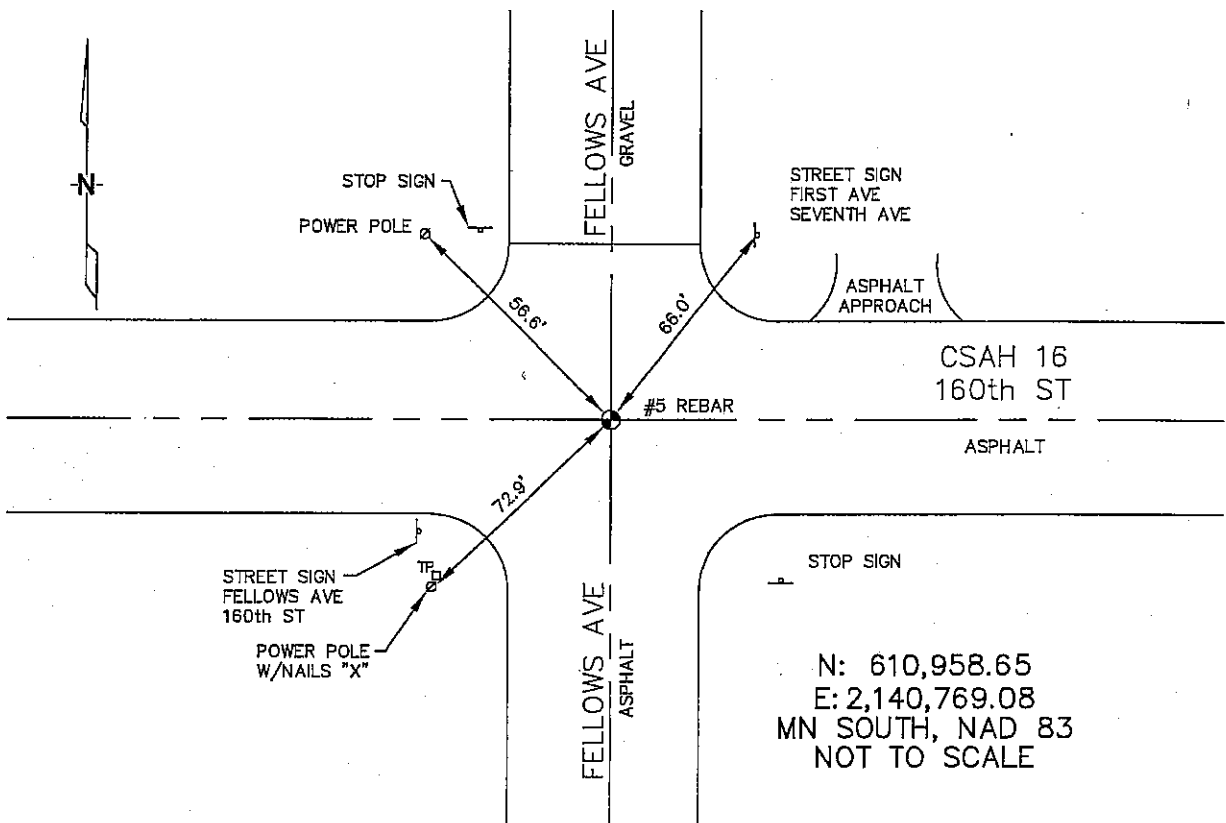
At the corner location shown on the sketch :

On 2/27/2006 found 5/8" REBAR AT C/L INTERSECTION OF ROADS.

left monument as found, lowered monument, removed monument (explain)

On _____ set _____

Sketch of reference ties



Statement of evidence relative to this corner location is on back page

I hereby certify that this document and the data contained herein was prepared by me or under my direct supervision.

Thomas J. Zeff 7/05/06
 Signature Date
 Registration No. 44563

- Land Surveyor, Professional Engineer
 County Surveyor, County Engineer

OFFICE OF THE COUNTY RECORDER
 County of _____

I hereby certify that this document was filed in the Co. Recorders office at _____ M. on the _____ day of _____ A.D. , 20

County Recorder _____
 By _____, Deputy

DOCUMENT NO. _____

STATEMENT OF EVIDENCE:

NORTHEAST CORNER, SECTION 2, T. 103 N., R. 42 W.,
NOBLES COUNTY, MINNESOTA

1867 Thomas B. Walker, US. Deputy Surveyor, monumented north township line.

2/27/2006 Ulteig Engineers, inv., Survey Crew, Brian Payne Party Chief, found a 5/8" rebar at the C/L intersection of the two roads.
Ties: NE-66.0' to "Street Sign" post;
SW-72.9' to nailed "X" on power pole;
NW-56.6' to power pole.