

CERTIFICATE OF LOCATION OF GOVERNMENT CORNER

NE Corner of Section 27, Township 103N, Range 42W, 5th P.M.
STATE OF MINNESOTA, County of NOBLES

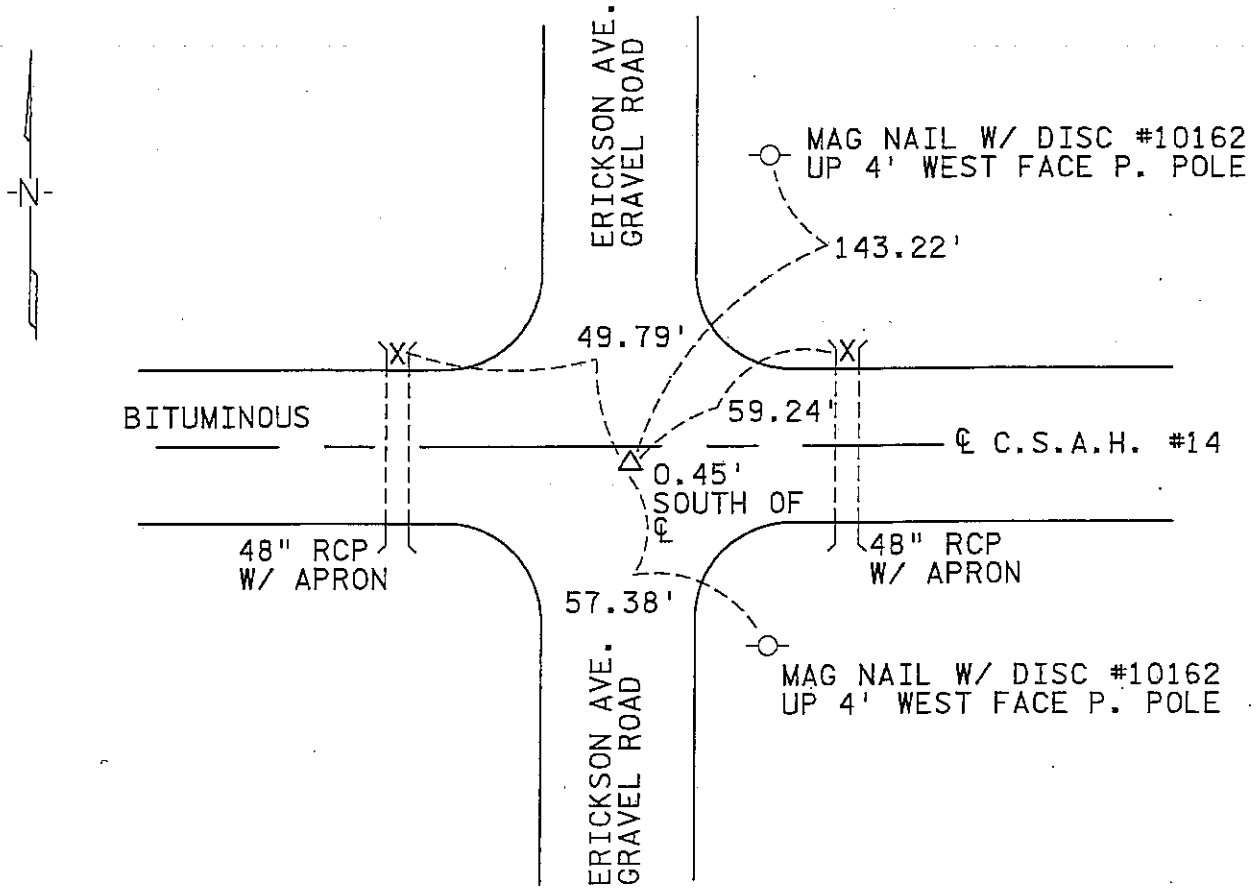
At the corner location shown on the sketch :

On 08-26-03 found 1/2" IRON PIN DOWN 1.20'

left monument as found, lowered monument, removed monument (explain)

On _____ set _____

Sketch of reference ties



Statement of evidence relative to this corner location is on back page

I hereby certify that this document and the data contained herein was prepared by me and under my direct supervision.

[Signature] 11/16/04
Signature Date

Registration No. 10162

Land surveyor, Professional Engineer

County Surveyor, County Engineer

OFFICE OF THE COUNTY RECORDER

County of Nobles

I hereby certify that this document was filed in the Co. Recorder office at 11:15 A.M. on the 23rd day of January, A.D., 2004

County Recorder [Signature], Deputy

DOCUMENT NO. 298351

Jessy Colley Associates

Statement of Evidence

NORTHEAST CORNER OF SECTION 27, TOWNSHIP 103 NORTH, RANGE 42 WEST, 5TH P.M.

September 1868:

George B. Howe and Richard H. L. Jewett, Deputy Surveyors, set a post in mound with pit for corner during the Original Public Land Survey.

August 1897:

Nobles County Surveyors Records, as shown on file at the County Recorder's office, show monument is "gone".

January 1915:

Wm. A. Saxon, Nobles County Surveyor, set stone for corner.

1923:

Nobles County Highway Department land ties show stone in place.

April 1926:

John Spolum, Nobles County Surveyor, found old stone for corner.

1941:

Nobles County Highway Department land ties show stone in place.

1953:

Nobles County Highway Department land ties show stone in place. Placed wood stake for corner.

June 1972:

Nobles County Highway Surveyor found wood stake, placed 24" iron pin for corner.

August 2003:

Chad Nolte, Yaggy Colby Associates, found 5/8" iron pin under bituminous roadway.

An analysis of the record and survey data indicates the iron pin is a perpetuation of the stone set by Wm. A. Saxon in 1915 and is accepted as a perpetuation of the Public Land Survey corner.

TRACKED _____ COMPARED _____
 PHOTO Jh
 FEE N/C K