

CERTIFICATE OF LOCATION OF GOVERNMENT CORNER

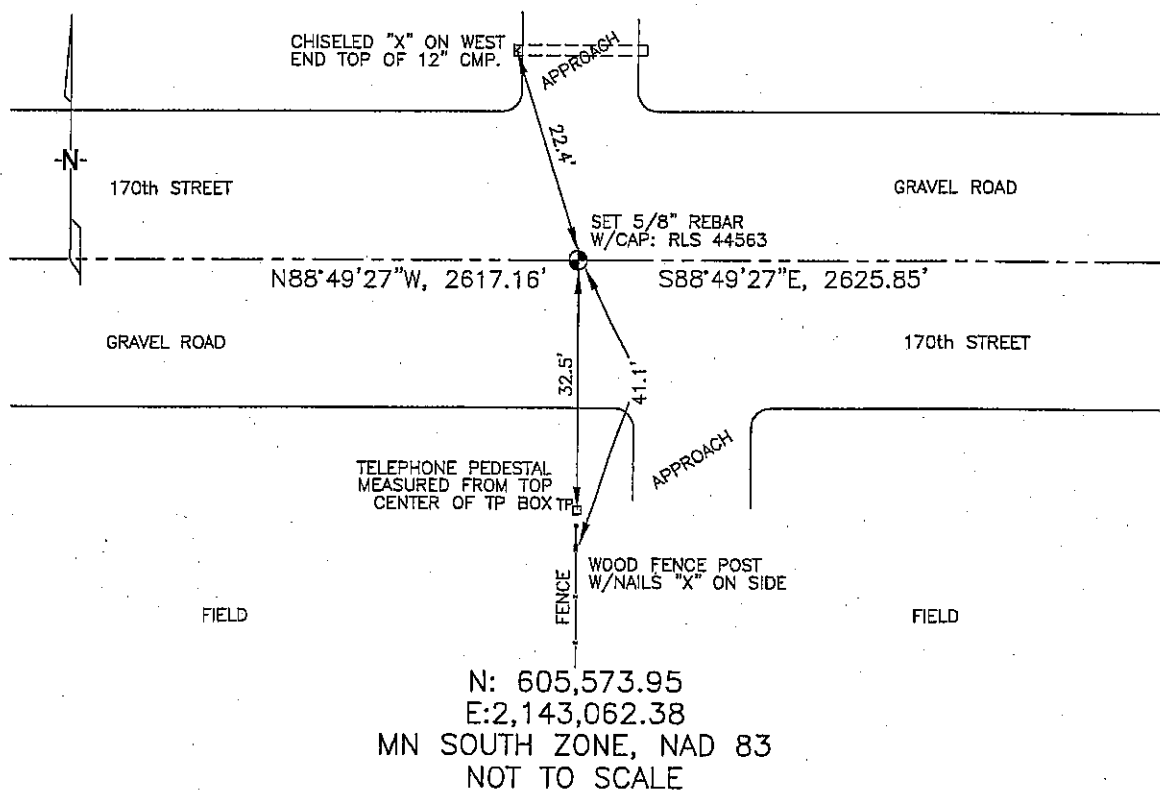
SOUTH 1/4 Corner of Section 1, Township 103, Range 42, 5TH P.M.

STATE OF MINNESOTA, County of NOBLES

At the corner location shown on the sketch :

- On _____ found _____
- left monument as found, lowered monument, removed monument (explain)
- On 3/8/2006 set 5/8" REBAR WITH CAP: RLS 44563, IN GRAVEL ROAD, OPPOSITE FENCE LINE RUNNING SOUTH.

Sketch of reference ties



Statement of evidence relative to this corner location is on back page

I hereby certify that this document and the data contained herein was prepared by me or under my direct supervision.

Thomas V. Zeff 4/18/06
 _____ Date
 Thomas V. Zeff

- Registration No. 44563
- Land Surveyor, Professional Engineer
- County Surveyor, County Engineer

OFFICE OF THE COUNTY RECORDER

County of _____

I hereby certify that this document was filed in the Co. Recorders office at _____ M. on the _____ day of _____ A.D., 20

County Recorder _____
 By _____, Deputy

DOCUMENT NO. _____

STATEMENT OF EVIDENCE:

SOUTH 1/4 CORNER, SECTION 1, T. 103 N., R. 42 W.,
NOBLES COUNTY, MINNESOTA

- 1868 Jewett & Howe, US. Deputy Surveyors, monumented corner.
- 1901 Nobles Co. Highway Dept., set stone on corner; no ties.
- 1936 Nobles Co. Highway Dept., found stone; no ties.
- 3/08/2006 Ulteig Engineers, Inc., Survey Crew, Brain Payne Party Chief,
found nothing. Set 5/8" rebar with cap: RLS 44563 in gravel road
opposite fence line running south.
Ties: NW-22.4' to chiseled "X" on top, west end, 12" C.M.P.;
S-32.5' to top, center of telephone pedestal;
S-41.1' to nailed "X" on side, od wood, fence post;
E-2625.85' to SE corner, Section 1;
W-2617.16' to SW corner, Section 1.