

CERTIFICATE OF LOCATION OF GOVERNMENT CORNER

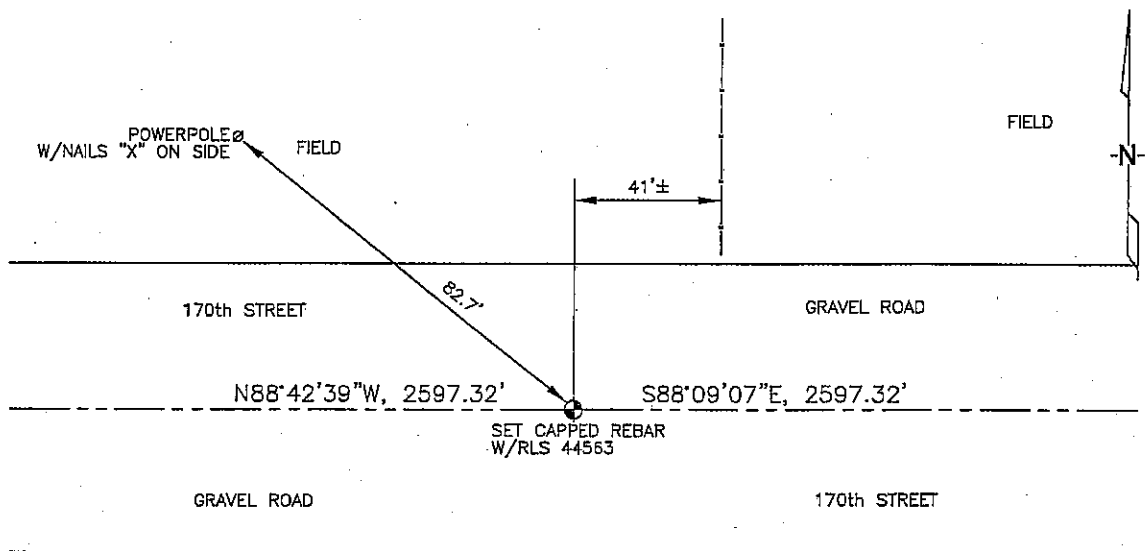
SOUTH 1/4 Corner of Section 2, Township 103, Range 42, 5TH P.M.

STATE OF MINNESOTA, County of NOBLES

At the corner location shown on the sketch :

- On _____ found _____
- left monument as found, lowered monument, removed monument (explain)
- On 3/8/2006 set A 5/8" REBAR WITH CAP: RLS 44563, IN C/L OF GRAVEL ROAD.

Sketch of reference ties



N: 605,711.43
E: 2,137,849.80
MN SOUTH ZONE, NAD 83
NOT TO SCALE

Statement of evidence relative to this corner location is on back page

I hereby certify that this document and the data contained herein was prepared by me or under my direct supervision.

Thomas V. Zeff

Thomas V. Zeff
Date 5/2/06

- Registration No. 44563
- Land Surveyor, Professional Engineer
- County Surveyor, County Engineer

OFFICE OF THE COUNTY RECORDER

County of _____

I hereby certify that this document was filed in the Co. Recorders office at _____ .M. on the day of _____ A.D. , 20

County Recorder _____
By _____, Deputy

DOCUMENT NO. _____

STATEMENT OF EVIDENCE:

SOUTH 1/4 CORNER, SECTION 2, T. 103 N., R. 42 W.,
NOBLES COUNTY, MINNESOTA

- 1868 Jewett & Howe US. deputy Surveyors, monumented corner.
- 3/08/2006 Ulteig Engineers, Inc., Survey Crew, Brian Payne Party Chief, found nothing. Set a 5/8" rebar with cap: RLS 44562.
Ties: NW-82.7' to nailed "X" on side of power pole;
E-41'± from fence line running north;
E-2597.32' to SE corner, Section 2;
W-2597.32' to SW corner, Section 2.