

UNITED STATES PUBLIC LAND SURVEY CORNER CERTIFICATE FOR

Land survey monuments situated in Section 11, Township 103 North, Range 42 West, of the Fifth Principal Meridian, Nobles County, Minnesota.

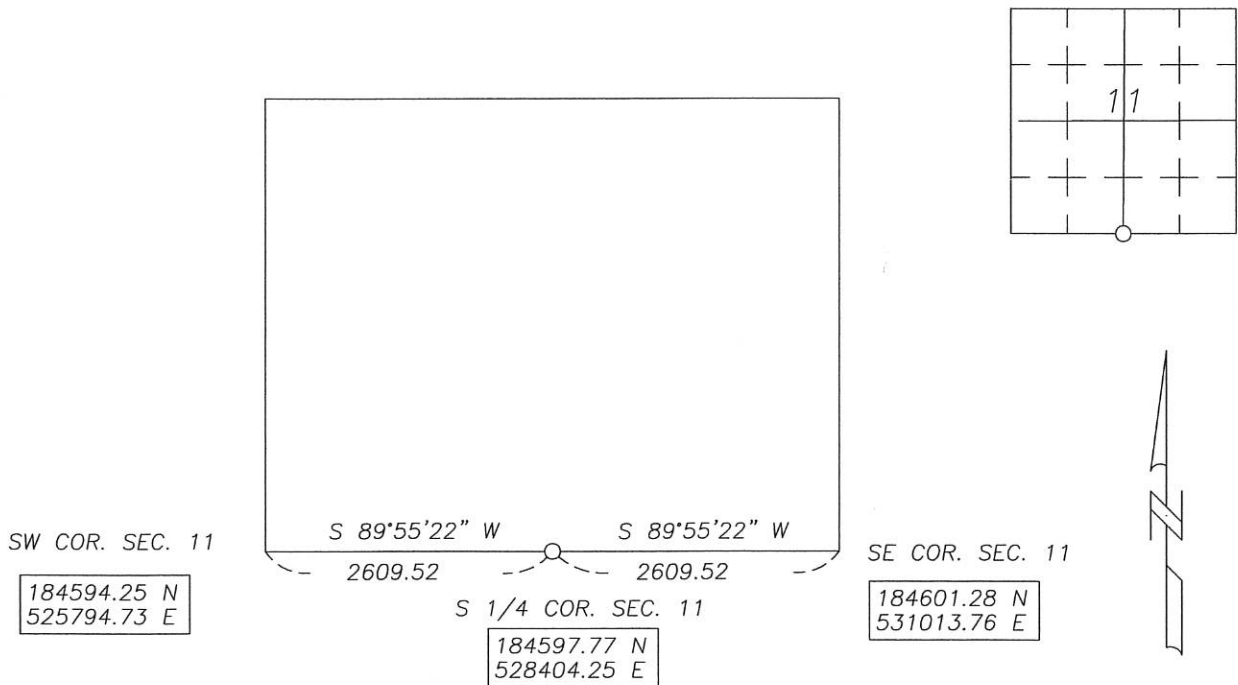
Previously recorded in N/A in County Recorder's Office.

(Show reason for preparing this certificate, the evidence and detailed procedure used in establishing the corner position & monumentation found or placed.)

MONUMENT DESCRIPTION AND REMARKS: On August 16, 2006 we dug for S 1/4 corner with backhoe
and found no evidence of corner. Original Township Plat Map shows south line of Sec. 11 to be short
also. (79.4 chains) We set corner midway and on line between SW and SE Section corners as per PLS
instructions.

PLAN-VIEW

NOBLES COUNTY COORDINATES



I hereby certify that this land surveying document was prepared and related survey work was performed by me or under my direct supervision and that I am a duly licensed Land Surveyor under the laws of the State of Iowa.

Perry L. Zieske 8-22-06
 Signature Date
 Perry Zieske
 License number 23008
 Sheet 1 of 1

Corners to be Indexed

Corners	Section	Township	Range
S 1/4	11	103	42